

# Building a Green Workforce From the Ground Up

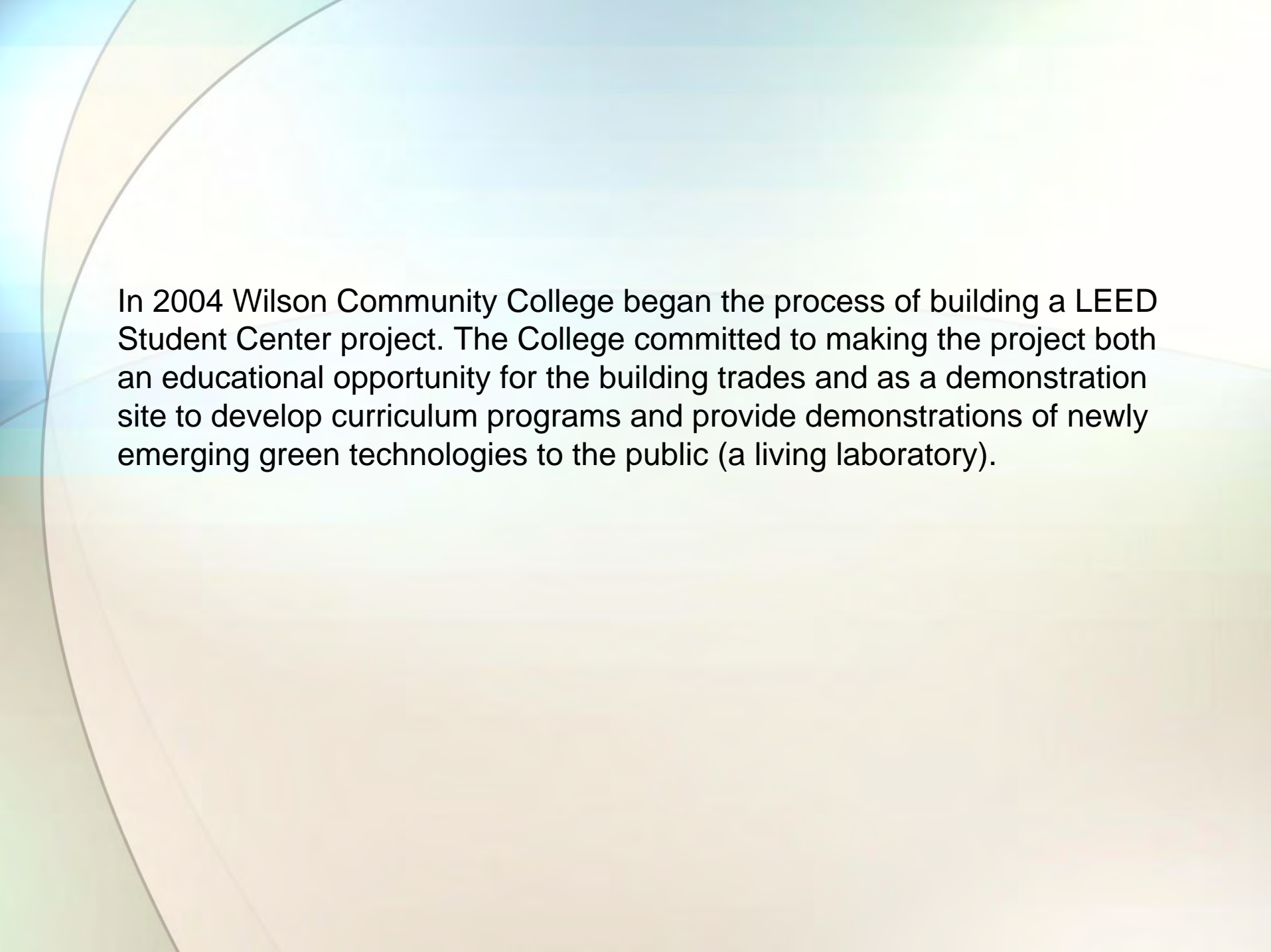
Rob Holsten  
Dean of Continuing Education & Sustainability  
Wilson Community College, Wilson, NC  
[www.wilsoncc.edu](http://www.wilsoncc.edu)

# Presentation Overview

- Wilson Community College
- LEED® Student Center Project
- Workforce Development/Green Advantage Training
- Sustainable Process

# Wilson Community College

- Established in 1958 (50th year)
- Located in eastern NC
- Agriculture & Manufacturing Economy
- New President, Dr. Rusty Stephens, Sept. 2003
- Adopted sustainability into mission, vision, and governance structure
- LEED® Student Center Project (2004)



In 2004 Wilson Community College began the process of building a LEED Student Center project. The College committed to making the project both an educational opportunity for the building trades and as a demonstration site to develop curriculum programs and provide demonstrations of newly emerging green technologies to the public (a living laboratory).

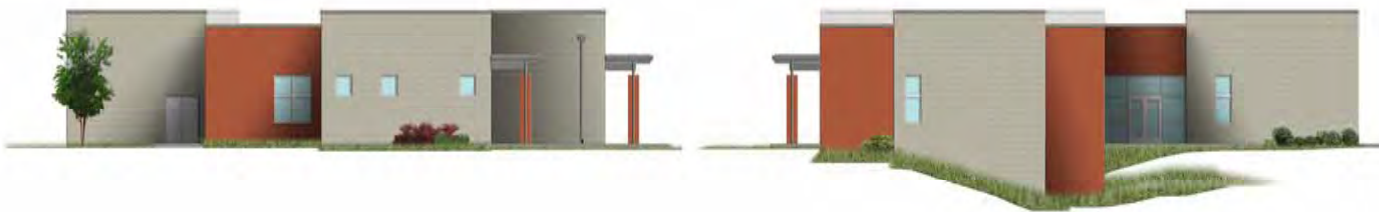








**Campus Master Plan  
2006-2016**





# Wilson Technical Community College Student Center



Williard Firm Architects, PA  
August 24, 2005



# Mistakes and lack of understanding about green building costs \$

- Improper ductwork installation
- Improper insulation/lack of insulation
- Wrong glues/sealants/adhesives used
- Poor window installation

In one case (NY), faulty ductwork had to be replaced at a cost of \$200,000 after construction was completed

# Workforce Development

- ~7 million construction workers in the U.S.
- ~219,000 construction workers in NC
- ~7,900 construction workers in Wilson, NC



# Green Advantage® for Commercial Contractors

- Covers green building principles  
rationale for green buildings, the design process, an overview of the LEED® rating system, construction operations, construction waste management, siting, the building structure, walls, windows, roofs, mechanical, electrical, plumbing systems, and equipment
- Compliments LEED® (innovation credit)
- Commercial and Residential versions  
Commercial version (piloted Dec. 2007)
- Seat based and on-line training
- Distribution of courses to community colleges



























# **Building a Program: The Sustainable Process**

# Elements of the Process

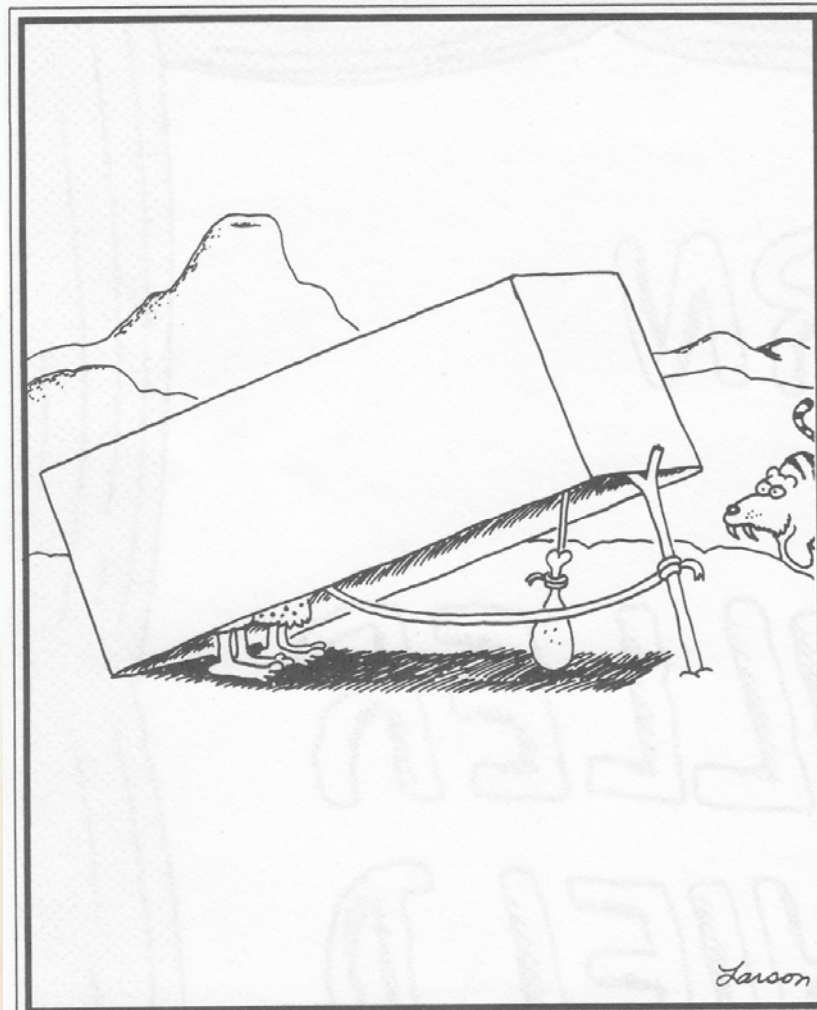
- Identifying the Problem
- Developing Solutions
- Making it Visible





# Identifying the Problem

- Green building? What color green?
- Existing green building training - USGBC LEED®
- Lack of green building training for contractors, subcontractors, and laborers
- Availability and affordability of training



"Shhhh, Zog! . . . Here come one now!"

# Developing Solutions

- Green Advantage® Certification Exam
- Existing training
  - DVGBC Green Advantage® course (Commercial)
  - Univ. of FL Build Green & Profit course (Residential)
- Community college version
  - seat based/on-line
- Partnerships/Collaboration/Sharing
- Funding (WCC Foundation)
- Distribution (Enterprise Plan through Foundation)



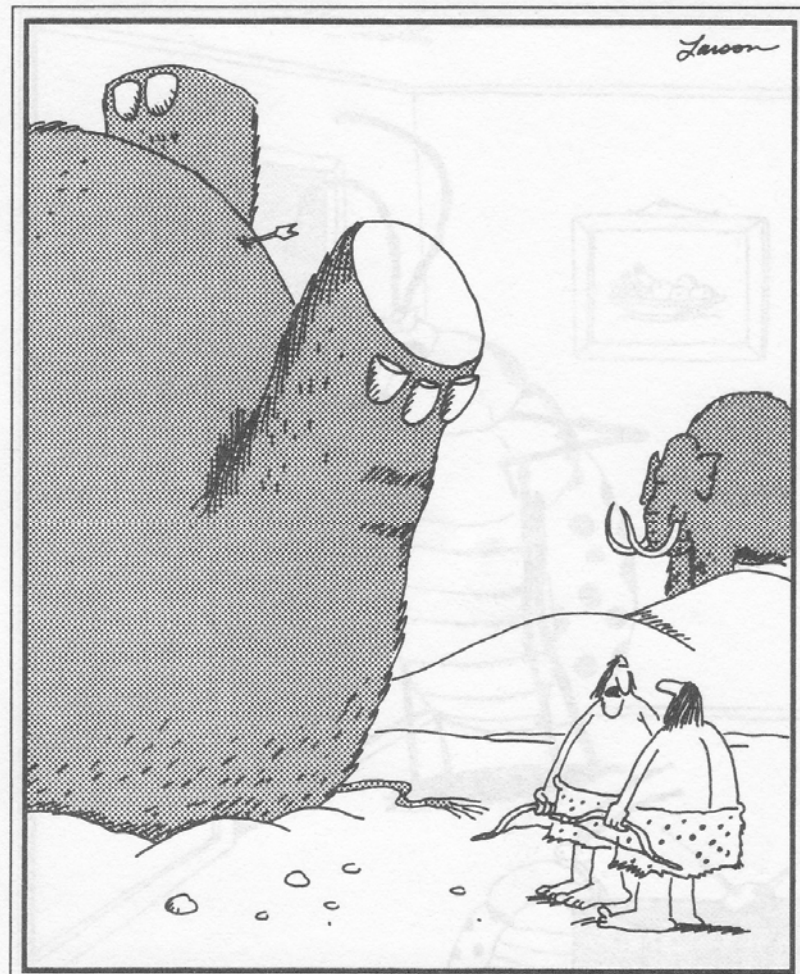


"Hang on, Betty . . . Someone's bound to see us eventually."

# Making it Visible

- Student Center project as a demonstration of and teaching tool for green building  
Photo/video documentation of project
- Availability of program to the national community college network
- Sharing the process
- Sustainable initiatives on website, [www.wilsoncc.edu](http://www.wilsoncc.edu)





"Maybe we should write that spot down."