

Sustainability Committee  
Tuesday, January 15, 2:00-3:00 pm, Building 7, Room 212K

## Minutes

### 1. Welcome and Introductions

- Present: Darlene Colborn, Jennifer Hayward, Brian Kelly, Lori Lilliefors, Bob Mention, Jyoti Naik, Claudia Owen, Paul Ruscher, Julie Sheen, Wendy Simmons, Dave Willis.

### 2. Updates and Announcements

- *Chasing Ice*: Paul encouraged Committee members to see the film Chasing Ice at the Bijou. For more info on the film see: [www.chasingice.com](http://www.chasingice.com) (NOTE: This link is currently opening in Explorer, but not in Mozilla). For show times, see <http://bijou-cinemas.com/bijouartcinemas/>.
- *Sustainability and Spirituality Update*: Bob reported that he Margaret, Russ, and Jim have met to discuss options for presenting sustainability and spirituality at Lane. The Sub-Committee has been research the literature on this topic. The Sub-Committee is working toward developing a position that can be published in a variety of ways (internet, speaker series, reading list, round table discussions, etc.). The Sub-Committee is mindful that there are many different ways to look at this topic, whether it is through the lens of various organized religions or whether it is it is through the lens of spirituality coming from inspiration from nature which then inspires mindfulness and simplicity.
- *Bicycles for Staff at Downtown Campus*: Wendy reported that Mike Sims place 3 LCC-owned bicycles at the Downtown Campus academic building which employees can check out and use for off-site appointments and errands during the work day. Wendy noted that one of the downtown employees requested that a tricycle be provided too. The tricycle could be used to haul more items.
- *Community College Meet Up at the Oregon Higher Education Sustainability Conference*: Jennifer announced that there will be a Community College Meet Up at the Oregon Higher Education Sustainability Conference that is taking place in Portland on January 31 & February 1. The main topic of the meet up will be to share what community colleges are doing with sustainability in curriculum and to discuss potential collaborations. Jennifer encouraged Sustainability Committee members to attend.

### 3. Climate Action Plan Progress Report

Claudia gave a presentation on the progress of the Climate Act Plan implementation. The presentation is attached. Attendees discussed appropriate ways for the Committee to be involved with tracking, implementation, and review of the plan. Paul noted that one of his classes will be measuring the biomass of Lane's forests and providing us with a more accurate number for the amount of carbon sequestered by the forests. Dave suggested that the Committee help with this forest biomass project. Claudia said that she we will discuss opportunities for the Committee to support the plan in more detail at future meetings.

### 4. Health and Wellness Fair

Committee agreed to make "Take Back The Tap" the topic of our table at the Health and Wellness fair.

# LCC's Climate Action Plan

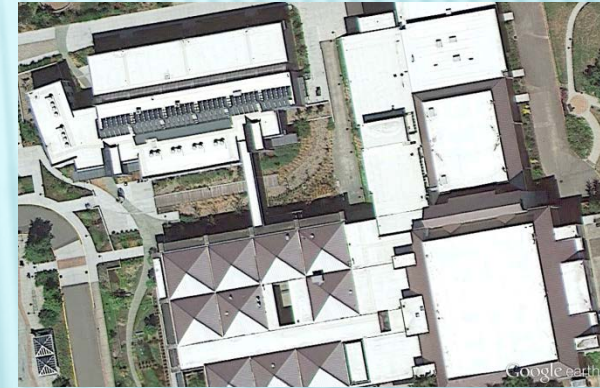
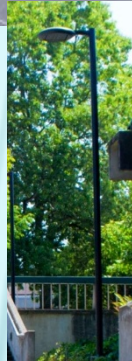
# OVERVIEW

---

- ✱ Energy Efficiency
- ✱ Renewable Energy
- ✱ Transportation & Land Use
- ✱ Reduced Waste and Purchasing
- ✱ Adaptation / Education / Habituation

# ENERGY EFFICIENCY

- ✖ New and remodeled buildings
- ✖ White insulated roofs
- ✖ Lighting efficiency
- ✖ Natural ventilation



# ENERGY EFFICIENCY

- ✖ Heat recovery
- ✖ Set Points
- ✖ Automated HVAC
- ✖ Monitoring, sub-metering
- ✖ Green Checklist
- ✖ Training maintenance personnel
- ✖ High efficiency upgrades
- ✖ Revolving loan fund for energy efficiency



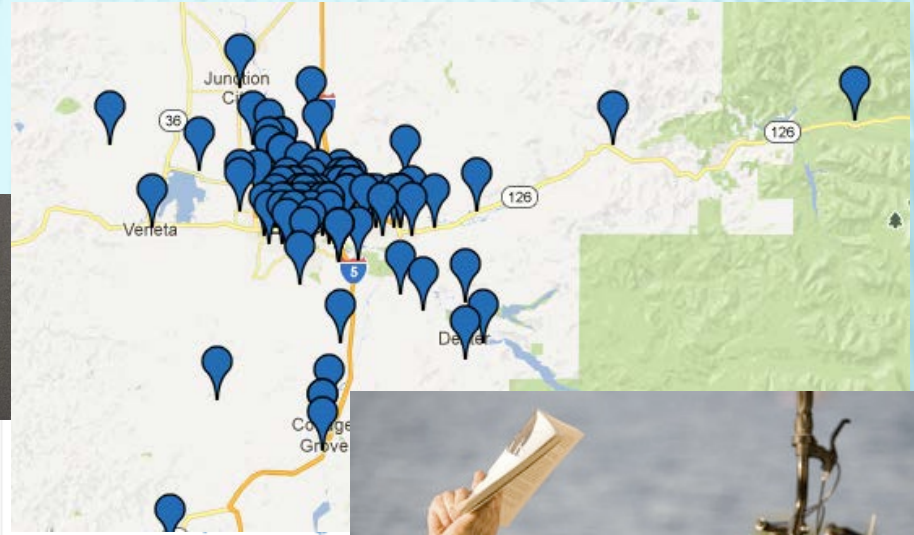
# RENEWABLE ENERGY

- ✖ Solar electric
- ✖ Solar thermal
- ✖ Purchase wind power
- ✖ Geothermal
- ✖ Develop strategies



# TRANSPORTATION & LAND USE

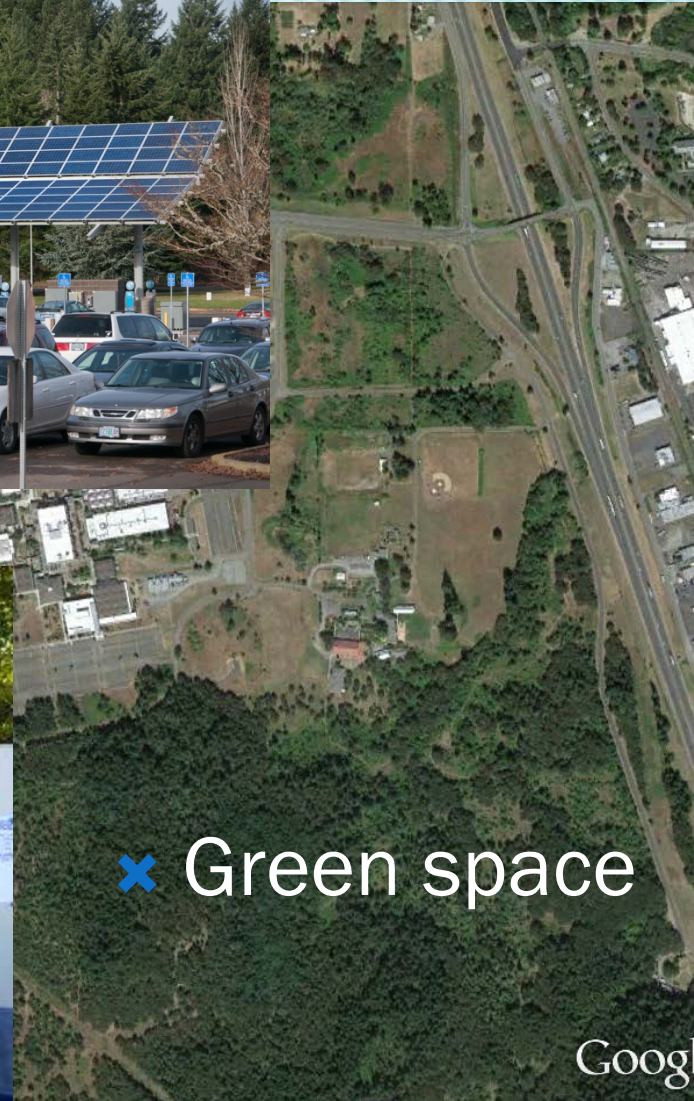
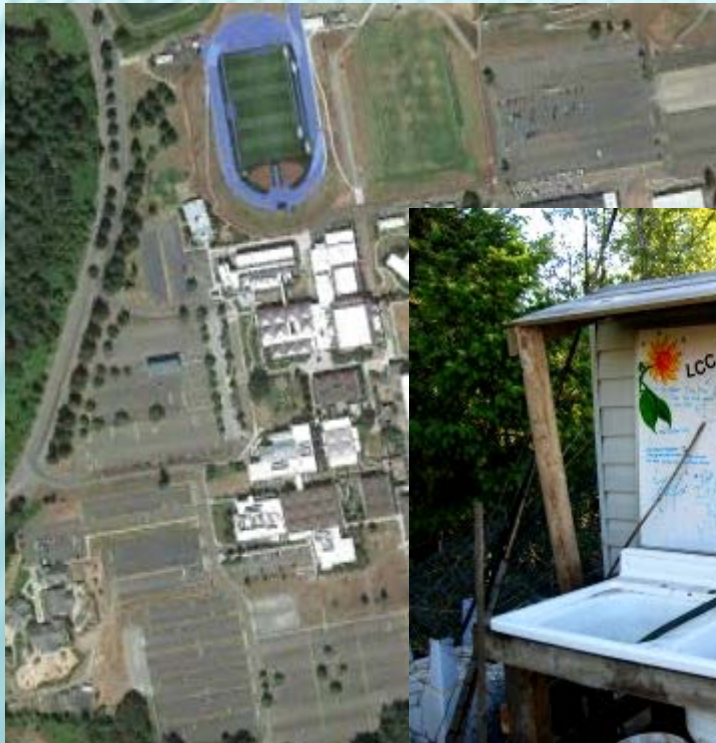
- ✖ Expand LTD
- ✖ Zimride
- ✖ Bike lane
- ✖ Parking lots
- ✖ Reduce commuting emissions
- ✖ Educate
- ✖ Incentives



- ✖ Offsets

# TRANSPORTATION & LAND USE

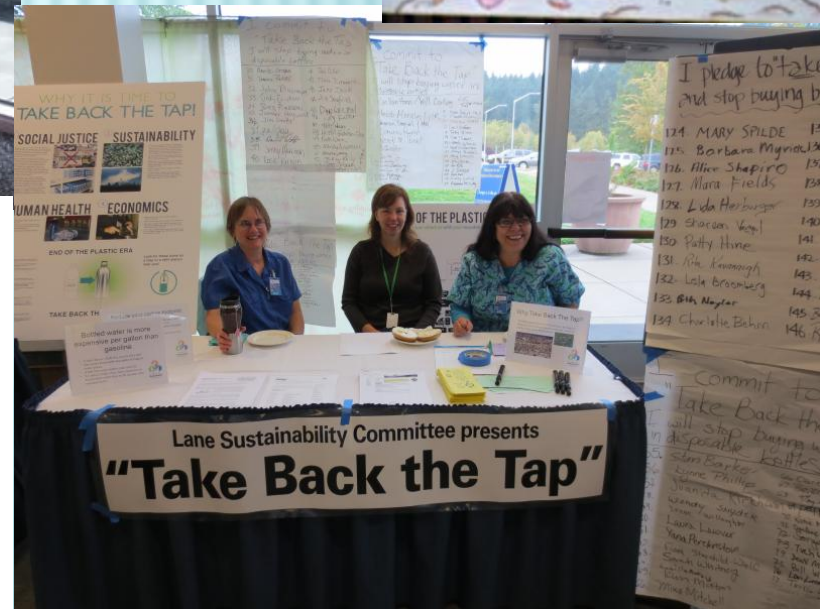
- ✖ Parking lot alternatives
- ✖ Forest for carbon
- ✖ Learning garden



- ✖ Green space

# REDUCED WASTE AND PURCHASING

- ✖ Reducing
- ✖ Hand dryers
- ✖ Reusing
- ✖ Recycling
- ✖ Composting
- ✖ Ban bottled water sales
- ✖ Green purchasing



# ADAPTATION / EDUCATION / HABITUATION

- ✖ Sust. degrees
- ✖ Sust. focused classes
- ✖ Sust. infused classes
- ✖ Campus learning lab
- ✖ Events
- ✖ Targeted education
- ✖ Graduation requirement

