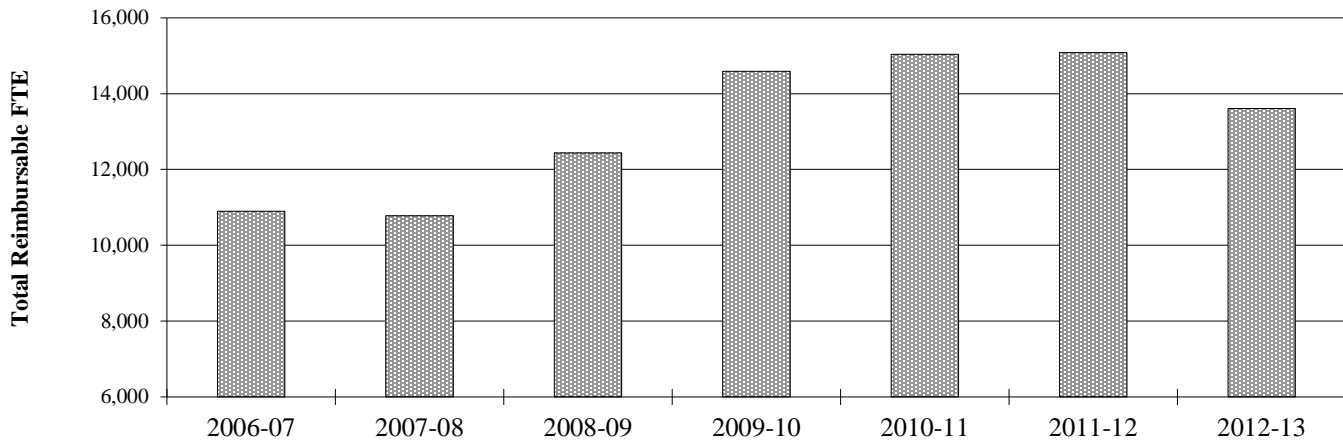
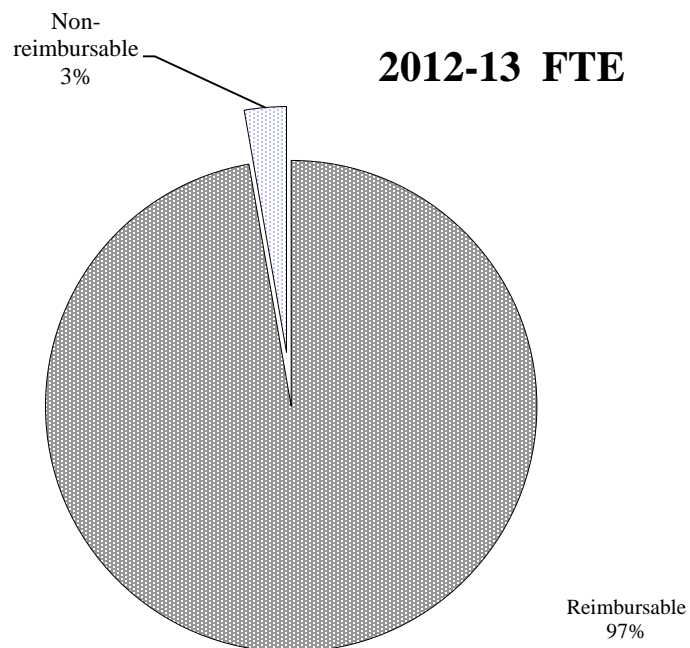


Total Reimbursable FTE



Total reimbursable FTE decreased 9.4% during 2012-13. Reimbursable FTE are derived from most courses taught and students enrolled at Lane. Courses yielding non-reimbursable FTE (i.e., these FTE are not considered in the state funding formula) are described by state instructional guidelines and can be generally categorized as certain types of hobby or recreation courses. Out-of-state students also yield non-reimbursable FTE.

Reimbursable FTE are used in the state funding formula. See "Community Education FTE" for more explanation of reimbursable courses.



	2006-07	2007-08	2008-09	2009-10	2010-11	2011-12	2012-13
Total Reimbursable FTE	10,897.9	10,778.0	12,435.2	14,588.6	15,037.4	15,082.0	13,611.2
% of Total Annual FTE	97.4%	97.4%	97.0%	97.5%	97.5%	97.7%	97.2%
Yearly Change	4.5%	-1.1%	15.4%	17.3%	3.1%	0.3%	-9.8%
Cumulative Change (change based on '01-02)	-14.5%	-15.4%	-2.4%	14.4%	18.0%	18.3%	6.8%

Source: OCCURS Course file and Enrollment Reports.