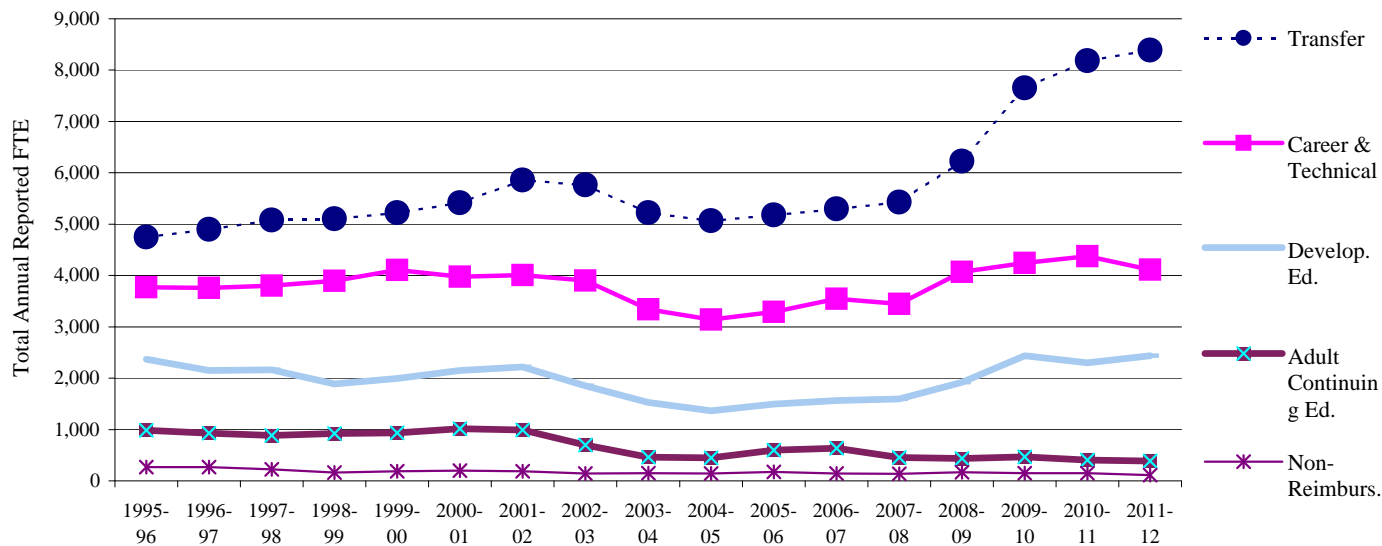


Key Benchmarks -- LANE Community College

Student FTE by Reimbursement Category



Category	2005-06	2006-07	2007-08	2008-09	2009-10	2010-11	2011-12
Transfer	5,181	5,296	5,429	6,226	7,654	8,186	8,387
Career & Technical	3,291	3,549	3,448	4,069	4,248	4,377	4,115
Developmental Ed.	1,496	1,565	1,593	1,922	2,434	2,298	2,438
Adult Continuing Ed.	598	635	456	433	470	407	385
Non-Reimbursable	172	144	139	166	152	150	112
Total Reported FTE	10,738	11,189	11,065	12,817	14,958	15,417	15,438

Analysis and Action: In 2011-12, Lane's total Reported FTE increased 0.1% compared to 2010-11.

FTE change by types of courses during 2011-12 ==> Transfer increased 2.5%; Career & Technical decreased 6.0%; Developmental Ed. increased 6.1%; Adult Continuing Ed. decreased 5.4%; Non-reimbursable decreased 25%.

Academic and Student Affairs units continue to evaluate and implement enrollment management strategies to improve student retention and success. A slightly improved employment rate in Oregon has contributed to lower enrollment in summer courses and lower registrations for fall courses compared to 2011-12; FTE is projected to be lower overall for 2012-13.

Notes: 1. *Developmental Ed.* courses include ESL, ABE, AHS, GED, and post-secondary remedial courses.

2. *Career & Technical* courses include courses in the reimbursement categories of Professional Technical Preparatory, Professional Technical Supplementary, and Apprenticeship.

3. The Self-Improvement category was changed to Adult Continuing Edn. (ACE) during the 2002 Special Legislative Session and classes that are not health, safety, or workforce-related are no longer eligible for state reimbursement funding.

4. 2.3% of Lane's '11-12 total reported FTE was non-reimbursable; these FTE are derived from: a) courses that meet state guidelines for this reimbursement category and b) from out-of-state students -- even when they are enrolled in reimbursable courses.

5. "Hold Harmless" FTE are not included in data reported above.

Data Sources: OCCURS Annual Enrollment Reports. 2011-12 data derived following completion of FTE Audit by CCWD.

Institutional Research, Assessment & Planning (August 16, 2012)

c:\irap\benchmar\2012-13\students\reimbcat.xls

