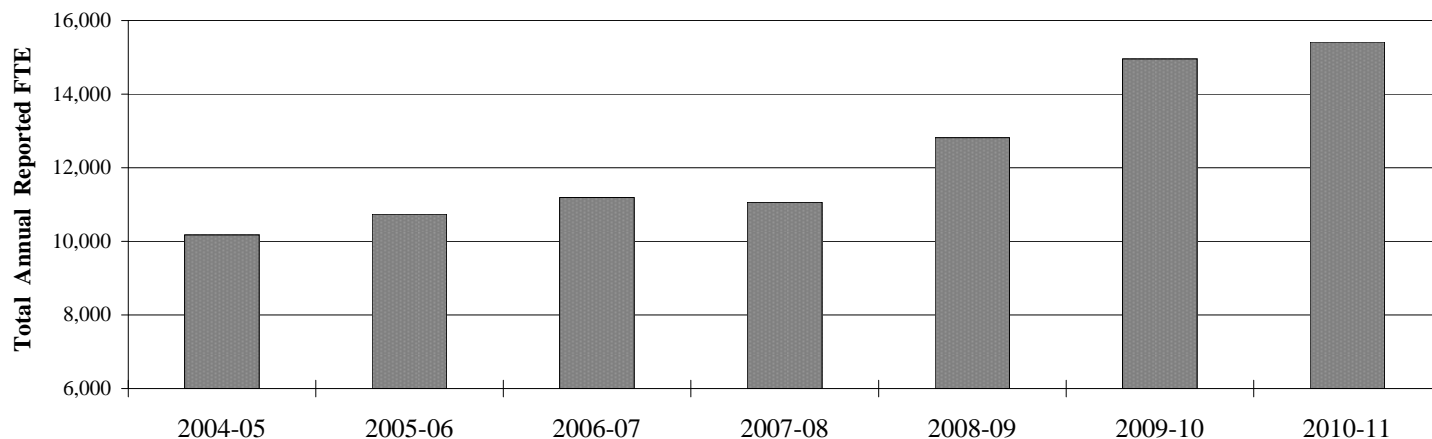


Total Annual Reported FTE

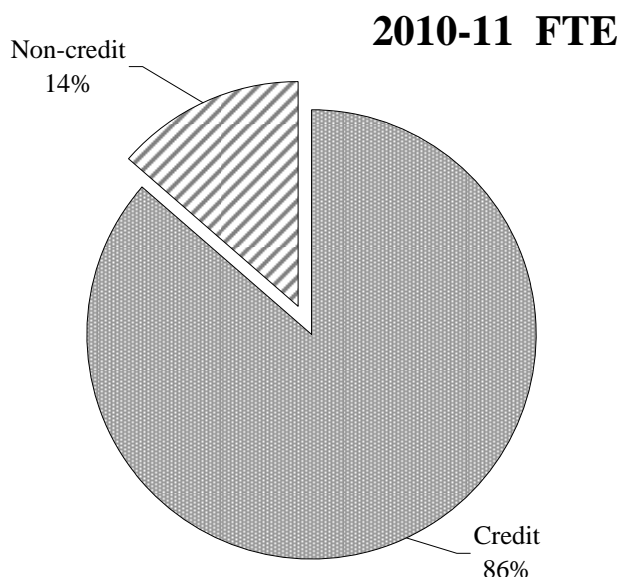
(includes reimbursable and non-reimbursable FTE)



Total Annual Reported FTE for Lane increased 3.1% in 2010-11. This includes both reimbursable and non-reimbursable FTE.

Credit FTE are derived from the following reimbursement categories: lower division collegiate, professional technical preparatory, and post-secondary remedial.

Note: Beginning fall term 2003, courses for fall term are offered over 11 weeks rather than 12 weeks. This results in fewer contact hours per course for the term and, therefore, fewer FTE compared to fall terms prior to 2003. The state continues to reimburse colleges on a 12-week basis for fall term under a "hold harmless" agreement that recalculates fall term FTE based on 12



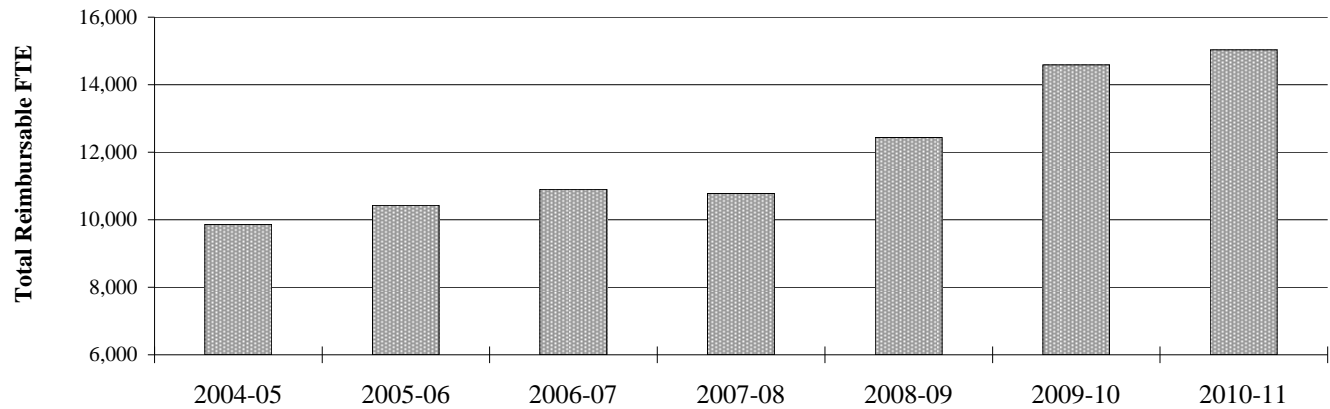
	2004-05	2005-06	2006-07	2007-08	2008-09	2009-10	2010-11
Total Reported FTE	10,173.7	10,738.0	11,189.1	11,064.8	12,817.2	14,957.7	15,417.1
% of Total Annual FTE	100%	100%	100%	100%	100%	100%	100%
Yearly Change	-4.9%	5.5%	4.2%	-1.1%	15.8%	16.7%	3.1%
Cumulative Change (change based on '01-02)	-23.3%	-19.1%	-15.7%	-16.6%	-3.4%	12.8%	16.2%

Source: IRZ2202 and OCCURS Course file and Enrollment Reports.

Institutional Research, Assessment & Planning

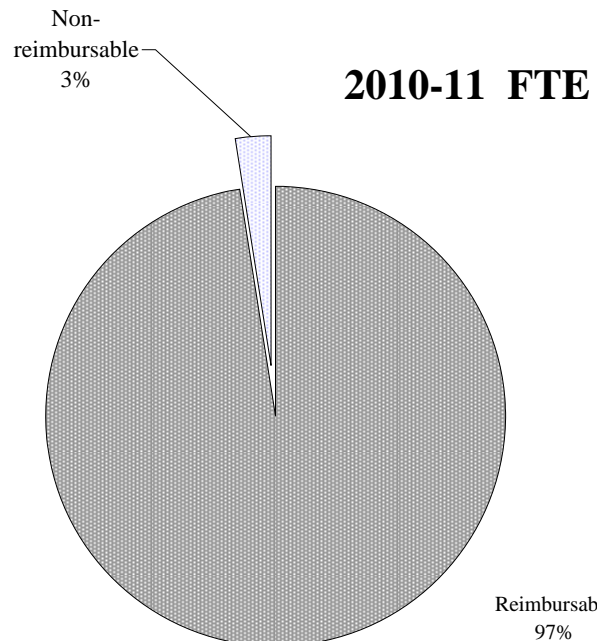
r:\profile\2010-11\fte\fte enrollment.xls {totl_fte}

Total Reimbursable FTE



Total reimbursable FTE increased 3.1% during 2010-11. Reimbursable FTE are derived from most courses taught and students enrolled at Lane. Courses yielding non-reimbursable FTE (i.e., these FTE are not considered in the state funding formula) are described by state instructional guidelines and can be generally categorized as certain types of hobby or recreation courses. Out-of-state students also yield non-reimbursable FTE.

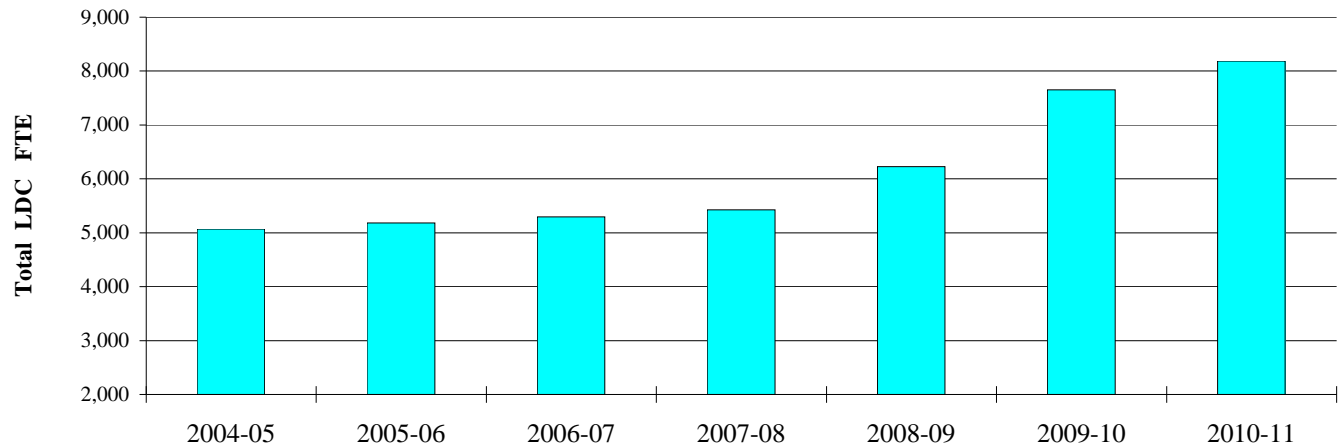
Reimbursable FTE are used in the state funding formula. See "Community Education FTE" for more explanation of reimbursable FTE. Note: Beginning fall term 2003, courses for fall term are offered over 11 weeks rather than 12 weeks. This results in fewer contact hours per course for the term and, therefore, fewer FTE compared to fall terms prior to 2003. The state continues to reimburse colleges on a 12-week basis for fall term under a "hold harmless" agreement that recalculates fall term FTE based on 12 weeks for the funding formula.



	2004-05	2005-06	2006-07	2007-08	2008-09	2009-10	2010-11
Total Reimbursable FTE	9,856.7	10,428.6	10,897.9	10,778.0	12,435.2	14,588.6	15,037.4
% of Total Annual FTE	96.9%	97.1%	97.4%	97.4%	97.0%	97.5%	97.5%
Yearly Change	-5.0%	5.8%	4.5%	-1.1%	15.4%	17.3%	3.1%
Cumulative Change (change based on '01-02)	-22.7%	-18.2%	-14.5%	-15.4%	-2.4%	14.4%	18.0%

Source: IRZ2202 and OCCURS Course file and Enrollment Reports.

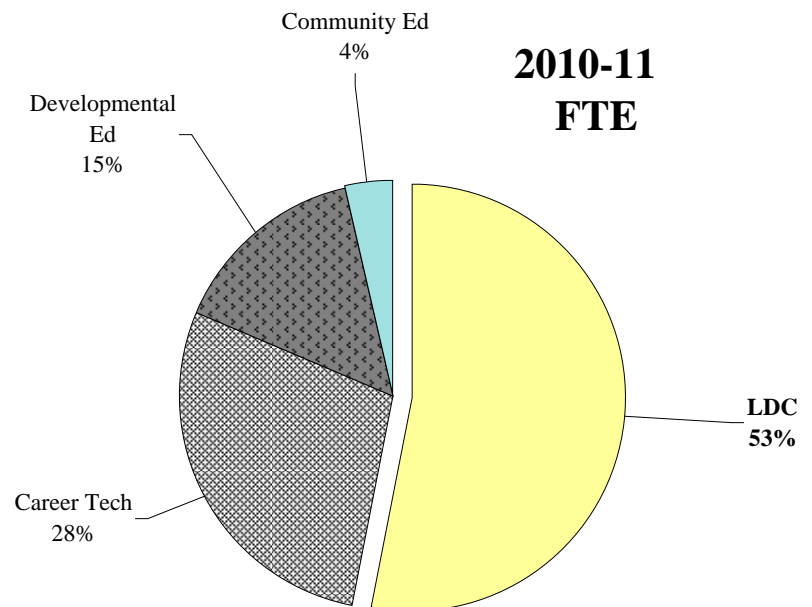
Lower Division Collegiate (Transfer) FTE



FTE in this reimbursement category are generated by students enrolled in courses in the Lower Division Collegiate (LDC) category. These courses are transferable to a four-year institution and apply toward a Bachelor's degree.

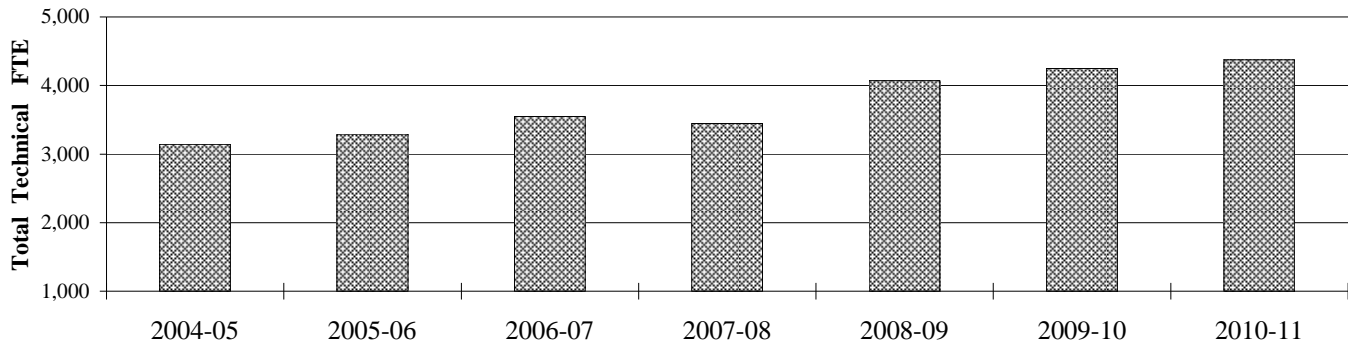
LDC FTE for Lane increased 6.9% in 2010-11.

Note: Beginning fall term 2003, courses for fall term are offered over 11 weeks rather than 12 weeks. This resulted in fewer contact hours per course for the term and, therefore, fewer FTE compared to fall terms prior to 2003. The state continues to reimburse colleges on a 12-week basis for fall term under a "hold harmless" agreement that



	2004-05	2005-06	2006-07	2007-08	2008-09	2009-10	2010-11
Total LDC FTE	5,068.0	5,181.0	5,296.1	5,428.5	6,226.5	7,654.0	8,185.8
% of Total Annual FTE	49.8%	48.2%	47.3%	49.1%	48.6%	51.2%	53.1%
Yearly Change	-3.0%	2.2%	2.2%	2.5%	14.7%	22.9%	6.9%
Cumulative Change (change based on '01-02)	-13.5%	-11.6%	-9.6%	-7.4%	6.2%	30.6%	39.7%

Career and Technical FTE

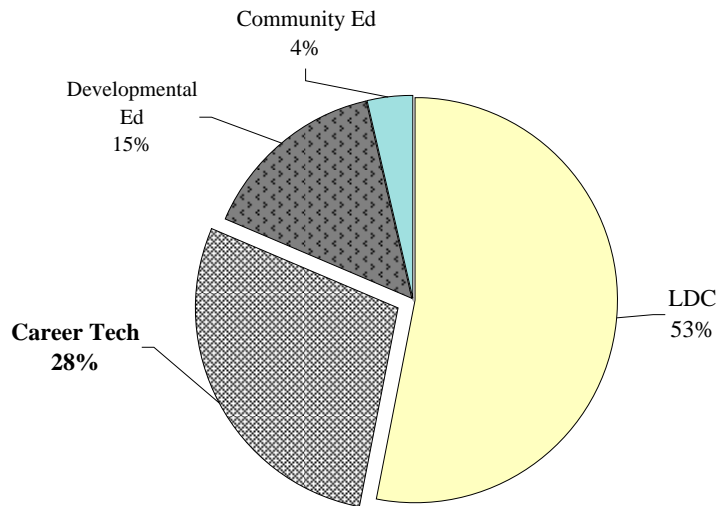


Career and Technical courses include the reimbursement categories of Preparatory, Supplementary, and Apprenticeship. FTE in this broad group increased 3.0% in 2010-11.

Some of courses included in this FTE category are offered through College Now and Lane's RTEC programs; both enable high school students to begin to train for a technical career while still in high school and to earn college credits while doing so.

Note: Beginning fall term 2003, courses for fall term are offered over 11 weeks rather than 12 weeks. This resulted in fewer contact hours per course for the term and, therefore, fewer FTE compared to fall terms prior to 2003. The state continues to reimburse colleges on a 12-week basis for fall term under a "hold harmless" agreement that recalculates fall term FTE based on 12 weeks for the funding formula.

2010-11 FTE

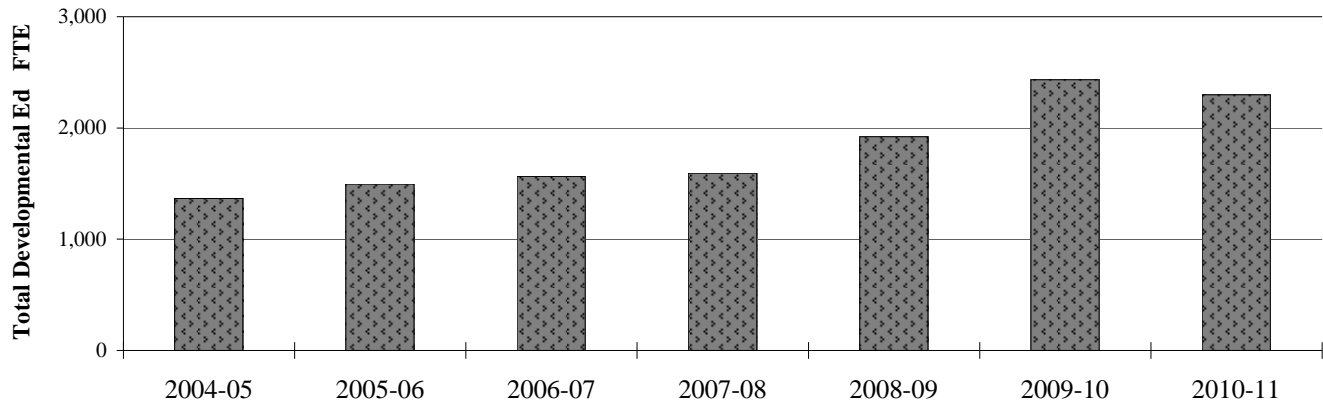


	2004-05	2005-06	2006-07	2007-08	2008-09	2009-10	2010-11
Total Career & Tech. FTE	3,143.7	3,291.2	3,548.6	3,447.6	4,069.3	4,247.6	4,376.5
% of Total Annual FTE	30.9%	30.6%	31.7%	31.2%	31.7%	28.4%	28.4%
Yearly Change	-5.9%	4.7%	7.8%	-2.8%	18.0%	4.4%	3.0%
Cumulative Change (based on '01-02)	-21.6%	-17.9%	-11.5%	-14.0%	1.5%	6.0%	9.2%
Preparatory	2,587.8	2,485.2	2,505.2	2,851.7	3,356.9	3,641.4	3,704.2
Supplementary	384.6	618.5	856.8	452.7	601.3	529.2	619.8
Apprenticeship	171.3	187.5	186.6	143.2	111.1	77.0	52.6

Source: IRZ2202; OCCURS Annual Enrollment Rpt.

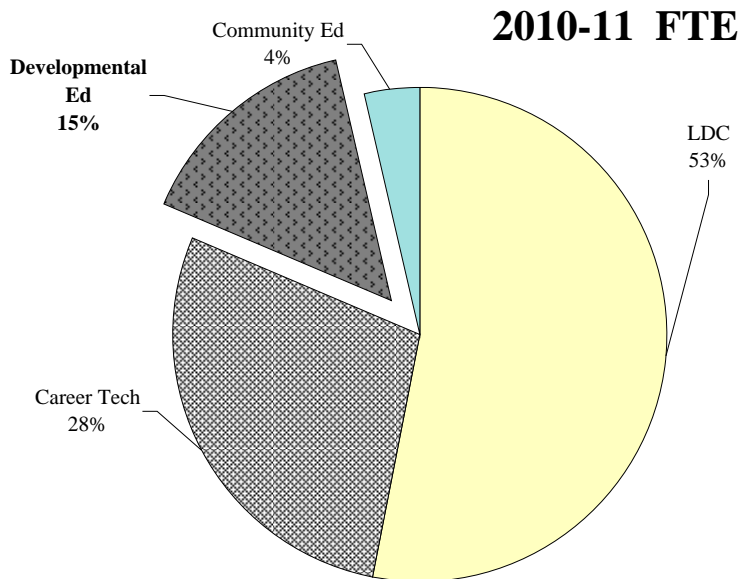
r:\profile\2010-11\fte\fte enrollment.xls {fte ct}

Developmental Education FTE



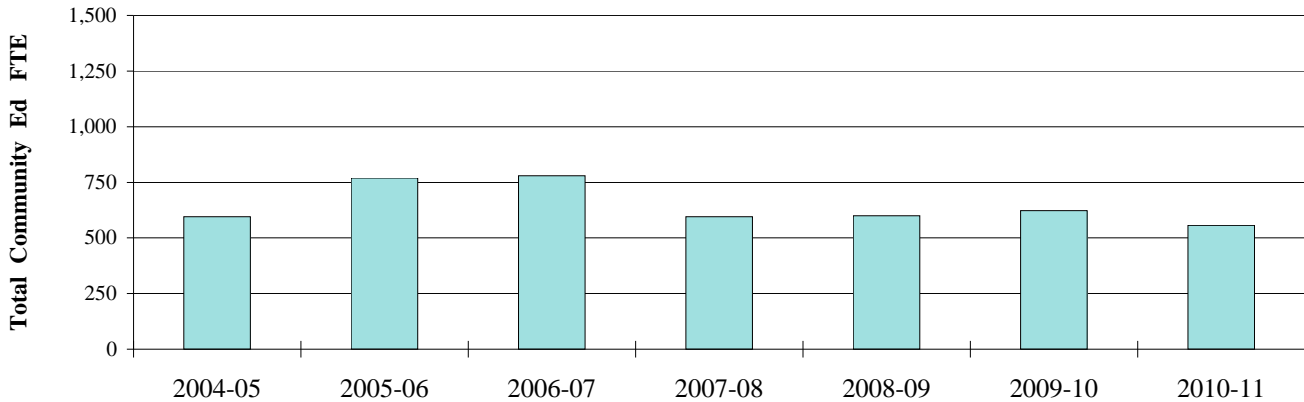
The broad group of Developmental Education includes courses from the following reimbursement categories: English as a Second Language (ESL), Adult Basic Education (ABE), General Education Development (GED), Adult High School (AHS), and Post-Secondary Remedial (PSR).

Note: Beginning fall term 2003, courses for fall term are offered over 11 weeks rather than 12 weeks. This resulted in fewer contact hours per course for the term and, therefore, fewer FTE compared to fall terms prior to 2003. The state continues to reimburse colleges on a 12-week basis for fall term under a "hold harmless" agreement that



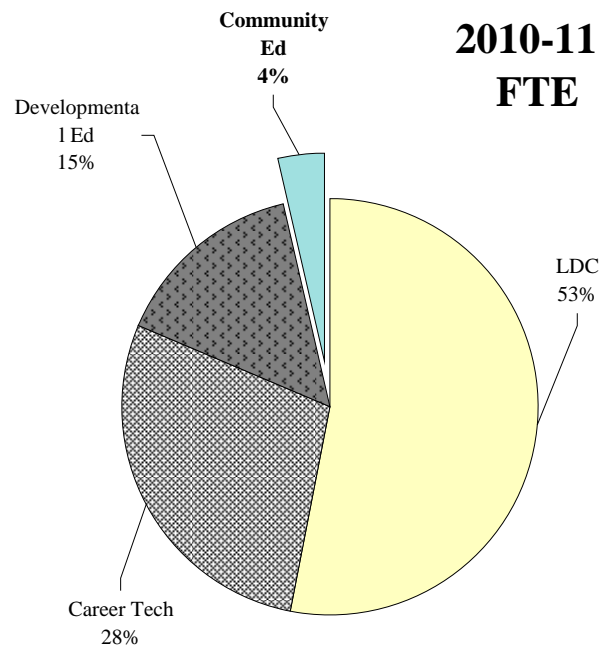
	2004-05	2005-06	2006-07	2007-08	2008-09	2009-10	2010-11
Total Developmental FTE	1,366.3	1,496.0	1,565.3	1,593.0	1,921.8	2,434.0	2,298.0
% of Total Annual FTE	13.4%	13.9%	14.0%	14.4%	15.0%	16.3%	14.9%
Yearly Change	-10.4%	9.5%	4.6%	1.8%	20.6%	26.6%	-5.6%
Cumulative Change (based on '01-02)	-38.5%	-32.6%	-29.5%	-28.2%	-13.4%	9.7%	3.5%
ESL	218.3	224.9	240.7	245.1	224.3	210.2	191.5
ABE	290.7	358.5	412.3	401.0	467.9	573.8	493.1
GED	84.8	107.0	121.6	137.7	193.2	217.2	200.5
AHS	-	-	-	-	-	-	-
PSR	772.5	805.6	790.7	809.1	1,036.5	1,432.8	1,412.9

Community Education FTE



FTE in this group are derived from courses in the Self-Improvement/Adult Continuing Ed. and Non-reimbursable reimbursement categories (Note: The Self-Improvement category was changed to Adult Continuing Edn. during the 2002 Special Legislative Session and classes that are not health-, safety-, or workforce-related are no longer eligible for state reimbursement funding). Lane departments contributing to this group include Business Development & Contract Training, Continuing Education & Educational Outreach, LCC at Cottage Grove and LCC at Florence. Note: Non-reimbursable FTE are derived from a particular category of courses and from out-of-state students enrolling in courses that would otherwise yield reimbursable FTE.

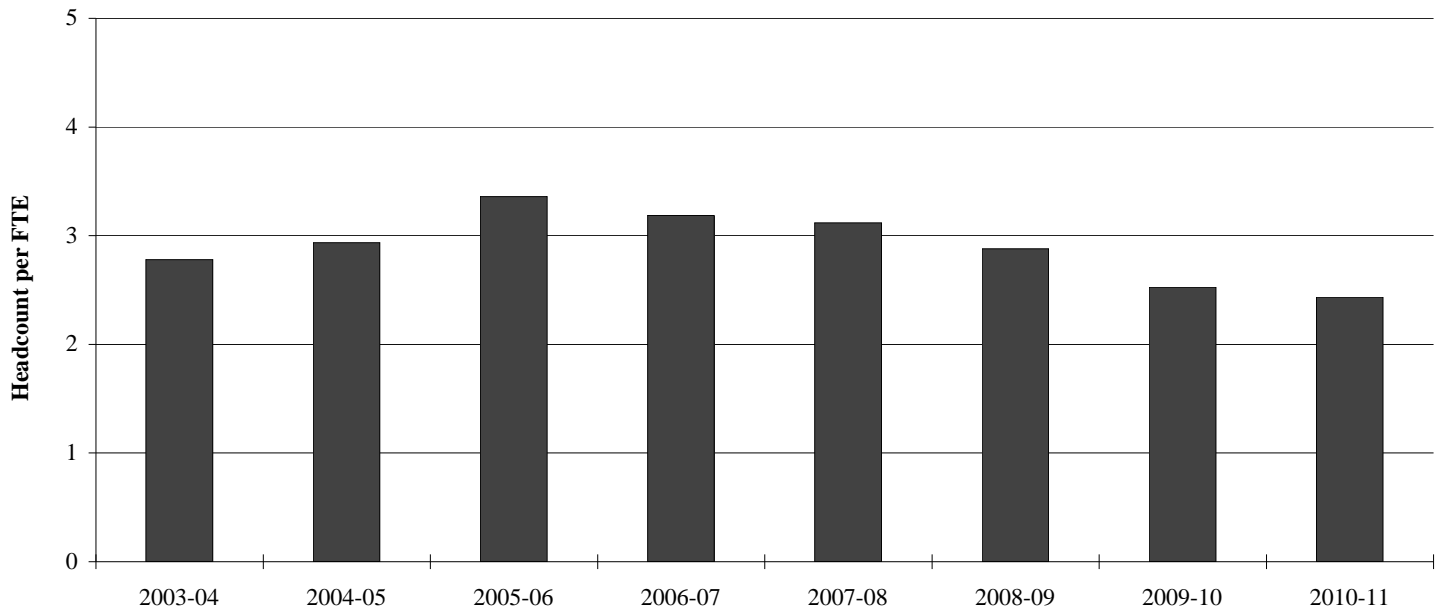
Note: Beginning fall term 2003, courses for fall term are offered over 11 weeks rather than 12 weeks. This resulted in fewer contact hours per course for the term and, therefore, fewer FTE compared to fall terms prior to 2003. The state continues to reimburse colleges on a 12-week basis for fall term under a "hold harmless" agreement that recalculates fall term FTE based on 12 weeks for the funding formula.



	2004-05	2005-06	2006-07	2007-08	2008-09	2009-10	2010-11
Total Community Ed FTE	595.8	769.8	779.1	595.6	599.6	622.2	556.8
% of Total Annual FTE	5.9%	7.2%	7.0%	5.4%	4.7%	4.2%	3.6%
Yearly Change	-2.0%	29.2%	1.2%	-23.5%	0.7%	3.8%	-10.5%
Cumulative Change (based on '01-02)	-49.3%	-34.5%	-33.7%	-49.3%	-49.0%	-47.1%	-52.6%
Self-Improve./Adult Continuing Edn.	451.0	598.3	634.8	456.2	433.5	470.2	407.1
Non-Reimbursable	144.8	171.5	144.3	139.4	166.1	151.9	149.7

Source: OCCURS Annual Enrollment Rpts.

r:\profile\2010-11\fte\fte enrollment.xls {comm_ed}

Headcount per FTE

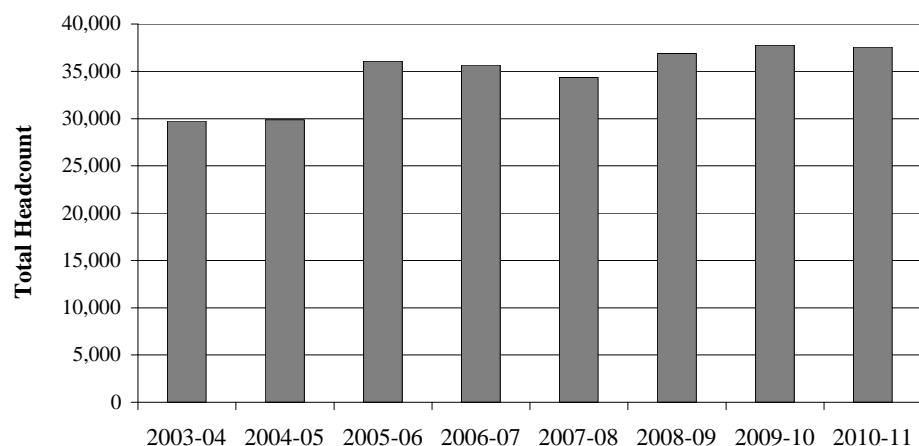
In 2010-11, it took an average of 2.44 students to generate one 510-clock-hour FTE. Over the past 5-years, the average of the headcount-per-FTE ratios = 2.8.

Note: Beginning fall term 2003, courses for fall term were offered over 11 weeks rather than 12 weeks. This resulted in fewer contact hours per course for the term and, therefore, fewer FTE compared to fall terms prior to 2003. The state continues to reimburse colleges on a 12-week basis for fall term under a "hold harmless" agreement that recalculates fall term FTE based on 12 weeks for the funding formula.

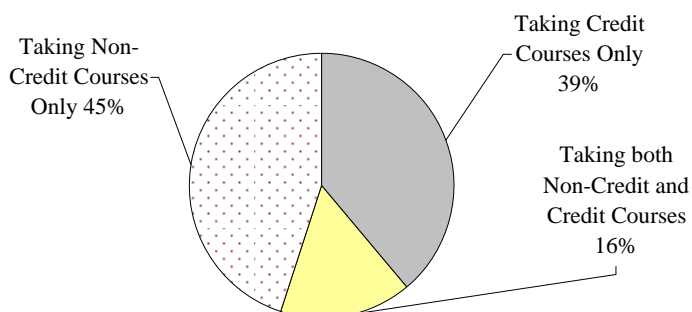
	2003-04	2004-05	2005-06	2006-07	2007-08	2008-09	2009-10	2010-11
Total FTE	10,699.9	10,173.7	10,738.0	11,189.1	11,064.8	12,817.2	14,957.7	15,417.1
Total Headcount	29,743	29,868	36,089	35,666	34,508	36,899	37,783	37,561
Headcount per FTE	2.78	2.94	3.36	3.19	3.12	2.88	2.53	2.44
Yearly Change	-0.1%	5.6%	14.5%	-5.2%	-2.2%	-7.7%	-12.3%	-3.5%
Cumulative Change	-8.0%	-2.9%	11.2%	5.4%	3.2%	-4.8%	-16.4%	-19.4%
(based on '01-02)								

Sources: OCCURS enrollment files

Total Headcount



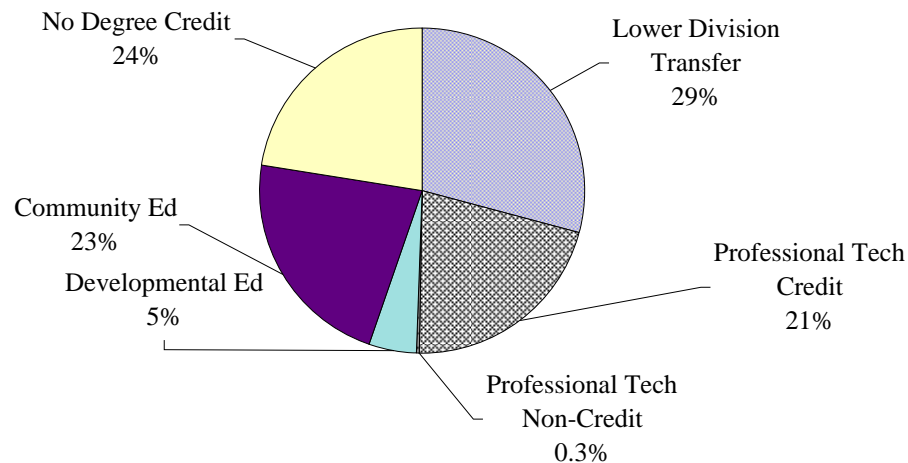
2010-11 Headcount



	2003-04	2004-05	2005-06	2006-07	2007-08	2008-09	2009-10	2010-11
Total Headcount	29,743	29,868	36,089	35,666	34,364	36,899	37,783	37,561
Yearly Change	-13.5%	0.4%	20.8%	-1.2%	-3.7%	7.4%	2.4%	-0.6%
Cumulative Change	-31.2%	-30.9%	-16.5%	-17.5%	-20.5%	-14.6%	-12.6%	-13.1%

(Cumulative Change is based on Lane's peak headcount year 2000-01 when the total headcount was 43,223.)

Students were counted as credit students if they were enrolled in credit courses any term they attended during the year.
 Credit courses include credit, College Now, and Tech Prep courses.
 Credit courses do not include Adult Basic Ed or non-credit courses.

Program Headcount**2010-11 Programs**

Lower Division Transfer programs include students who have declared majors in Transfer programs. These include the AAOT, ASOT, AS, and AG degree programs and Direct Transfer majors.

Professional Technical programs include credit students who are pursuing professional technical fields or training. Non-credit professional training includes massage therapy, court reporting, and short-term training.

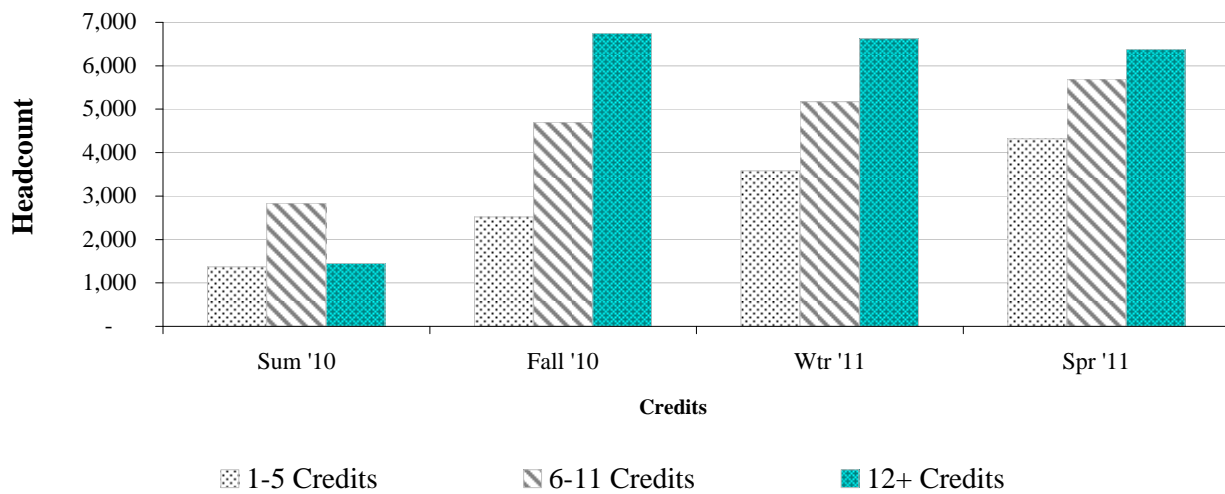
Developmental education students are in programs such as GED, English as a Second Language, and Adult Basic Education.

No Degree Credit students are taking credit classes but have not declared a program that includes a degree or direct transfer major.

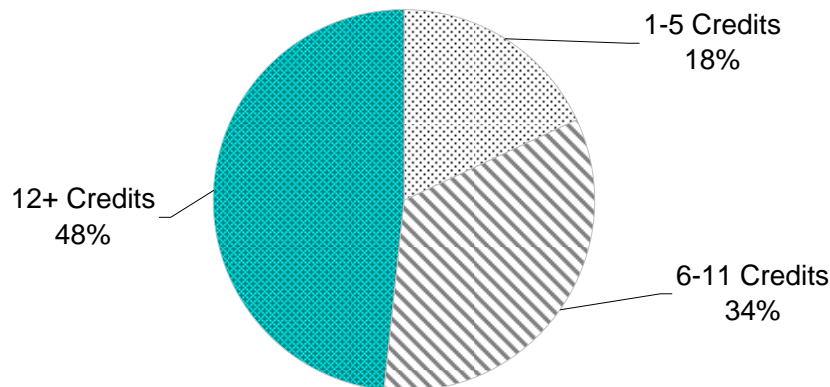
	2008-09	%	2009-10	%	2010-11	%
Lower Division Transfer	9,348	25.3%	10,714	28.4%	10,990	29.3%
Professional Tech Credit	6,134	16.6%	7,257	19.2%	7,915	21.1%
Professional Tech Non-Credit	240	0.7%	116	0.3%	97	0.3%
Developmental Ed	1,816	4.9%	1,989	5.3%	1,728	4.6%
Community Ed	9,936	26.9%	8,614	22.8%	8,347	22.2%
No Degree Credit	9,425	25.5%	9,093	24.1%	8,484	22.6%
Total	36,899	100.0%	37,783	100.0%	37,561	100.0%

Source: OCCURS Student Files Unduplicated by Last Term Registered

Enrollment by Credit Hours



Attempted Credits Fall Term 2010



<i>Credits Attempted</i>	Sum '10		Fall '10		Wtr '11		Spr '11	
<i>%</i>	<i>#</i>	<i>%</i>	<i>#</i>	<i>%</i>	<i>#</i>	<i>%</i>	<i>#</i>	<i>%</i>
1-5 Credits	1,367	24.2%	2,521	18.0%	3,581	23.3%	4,319	26.3%
6-11 Credits	2,836	50.2%	4,700	33.6%	5,170	33.6%	5,693	34.7%
12+ Credits	1,449	25.6%	6,753	48.3%	6,622	43.1%	6,384	38.9%
Totals	5,652	100%	13,974	100%	15,373	100%	16,396	100%

Twenty-seven hundred and sixty-three (2,763) students attempted 12+ credits in three out of four terms during 2008-09.

Thirty-six hundred and two (3,602) students attempted 12+ credits in three out of four terms during 2009-10 representing a 30% increase compared to the prior year. In 2010-11, there were 3,713 students in this category.

Source: OCCURS Enroll Files