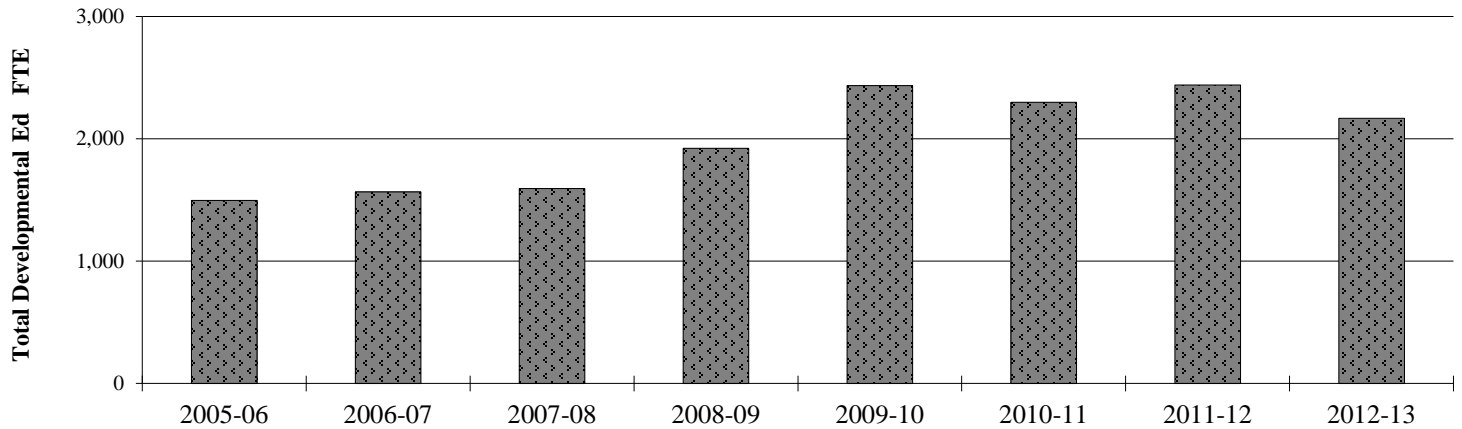
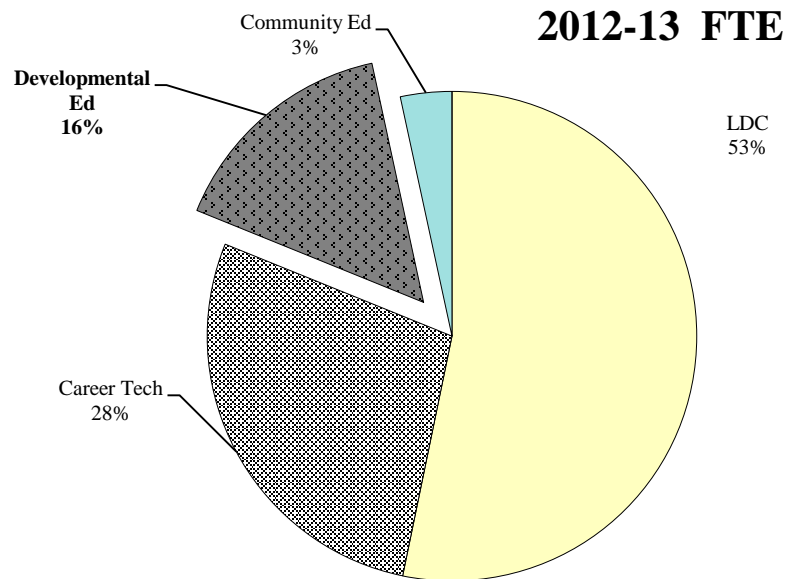


## *Developmental Education FTE*



The broad group of Developmental Education includes courses from the following reimbursement categories: English as a Second Language (ESL), Adult Basic Education (ABE), General Education Development (GED), Adult High School (AHS), and Post-Secondary Remedial (PSR).

FTE in this category decreased 10.8% in 2012-13.



	2005-06	2006-07	2007-08	2008-09	2009-10	2010-11	2011-12	2012-13
Total <b>Developmental</b> FTE	1,496.0	1,565.3	1,593.0	1,921.8	2,434.0	2,298.0	<b>2,438.1</b>	<b>2,167.9</b>
% of Total Annual FTE	13.9%	14.0%	14.4%	15.0%	16.3%	14.9%	15.8%	15.5%
Yearly Change	9.5%	4.6%	1.8%	20.6%	26.6%	-5.6%	<b>6.1%</b>	<b>-11.1%</b>
Cumulative Change (based on '01-02)	-32.6%	-29.5%	-28.2%	-13.4%	9.7%	3.5%	9.8%	-2.3%
ESL	224.9	240.7	245.1	224.3	210.2	191.5	173.8	166.8
ABE	358.5	412.3	401.0	467.9	573.8	493.1	450.8	394.2
GED	107.0	121.6	137.7	193.2	217.2	200.5	167.1	160.9
AHS	-	-	-	-	-	-	-	-
PSR	805.6	790.7	809.1	1,036.5	1,432.8	1,412.9	1,646.4	1,446.0

Source: IRZ2202; OCCURS Annual Enrollment Rpt.

r:\profile\2012-13\fte\fte enrollment.xls {devel\_ed}