

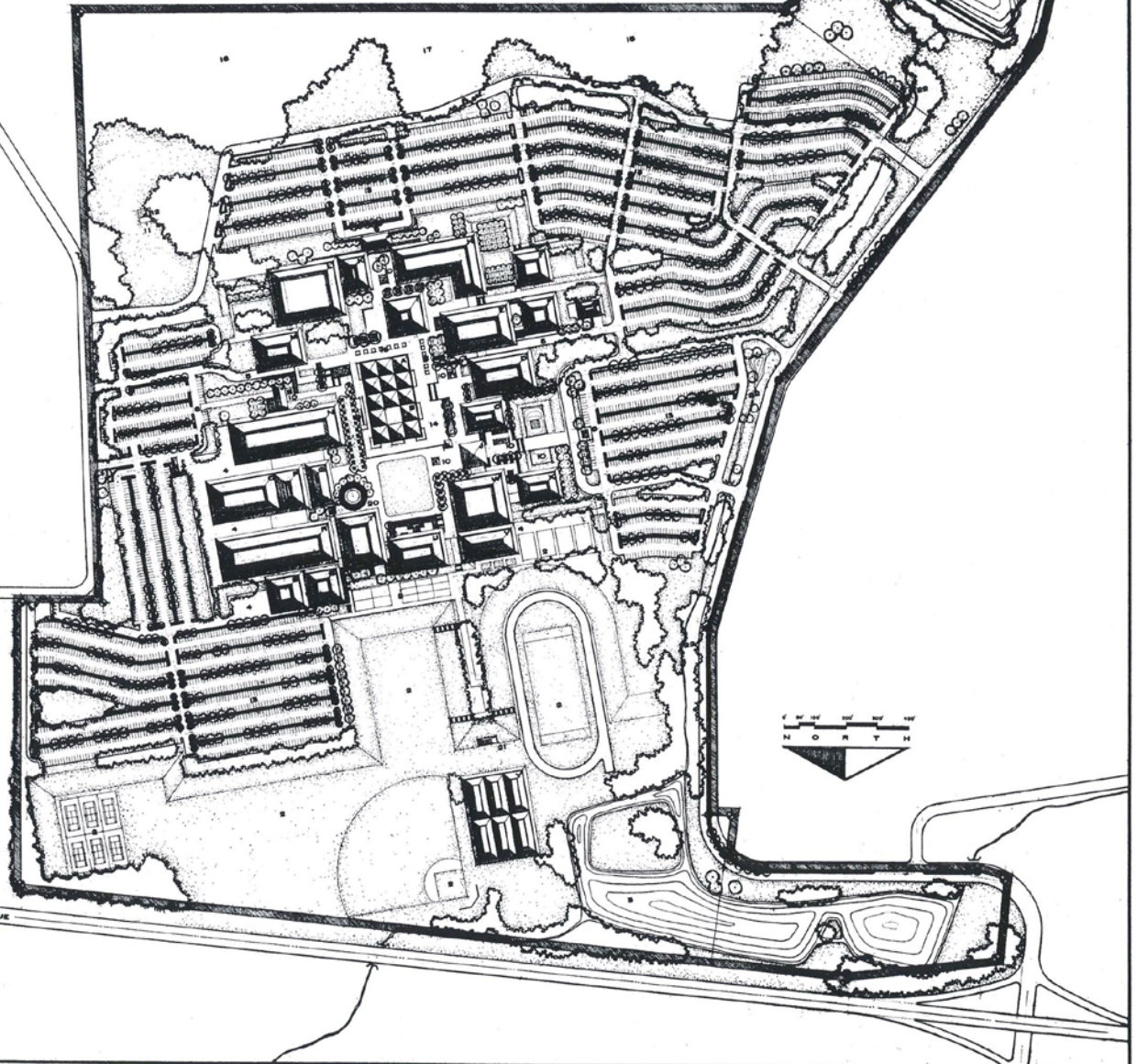
LANE COMMUNITY COLLEGE COMPREHENSIVE CAMPUS PLAN

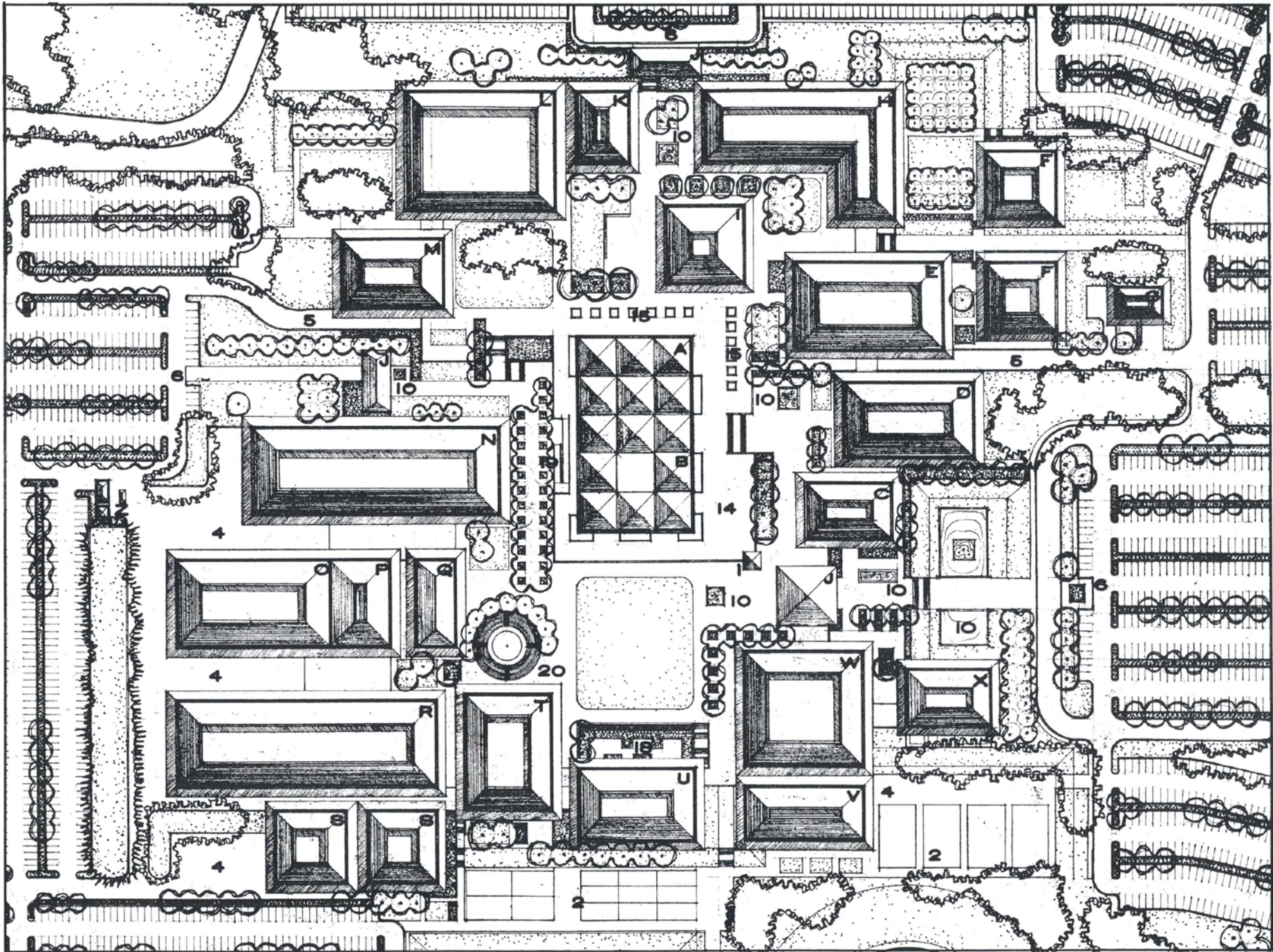
BALZHEBER, SEDER AND RHODES - ARCHITECTS
MITCHELL AND MO ARTHUR - LANDSCAPE ARCHITECTS & SITE PLANNERS

LEGEND

- A. LEARNING RESOURCES CENTER
- B. STUDENT CENTER
- C. ADMINISTRATION
- D. BUSINESS EDUCATION
- E. CONSTRUCTION - APPRENTICESHIP
- F. APPRENTICESHIP
- G. FIRE STATION
- H. COMMUNICATION - SOCIAL SCIENCE
- I. FORUM
- J. PAVILION
- K. MATH
- L. SCIENCE
- M. ELECTRONICS
- N. AIR FRAME - POWER
- O. WELDING - FARM MACHINERY - AUTO BODY & FENDER
- P. MECHANICS SHOP
- Q. MECHANICS CLASSROOMS - FACULTY OFFICES
- R. AUTO MECHANICS - DIESEL
- S. MAINTENANCE
- T. FINE ARTS
- U. POOL
- V. PHYSICAL EDUCATION
- W. GYM
- X. HEALTH
- Y. COVERED TENNIS COURTS - MULTI-PURPOSE
- Z. SERVICE STATION

- 1. CLOCK TOWER
- 2. PLAYFIELDS & COURTS
- 3. LAGOON
- 4. SERVICE
- 5. SERVICE DRIVE
- 6. PEDESTRIAN LOADING & UNLOADING
- 7. LAKE
- 8. DAM
- 9. PUMP HOUSE
- 10. FOUNTAIN
- 11. KNOLL
- 12. LOOKOUT PAVILION
- 13. PARKING
- 14. TERRACE
- 15. LIGHT WELLS
- 16. FOREST
- 17. SILVICULTURE - HORTICULTURE GARDENS
- 18. SUN TERRACE
- 19. RAMP
- 20. AMPHITHEATER
- 21. RESTROOMS - STORAGE
- 22. STREAM

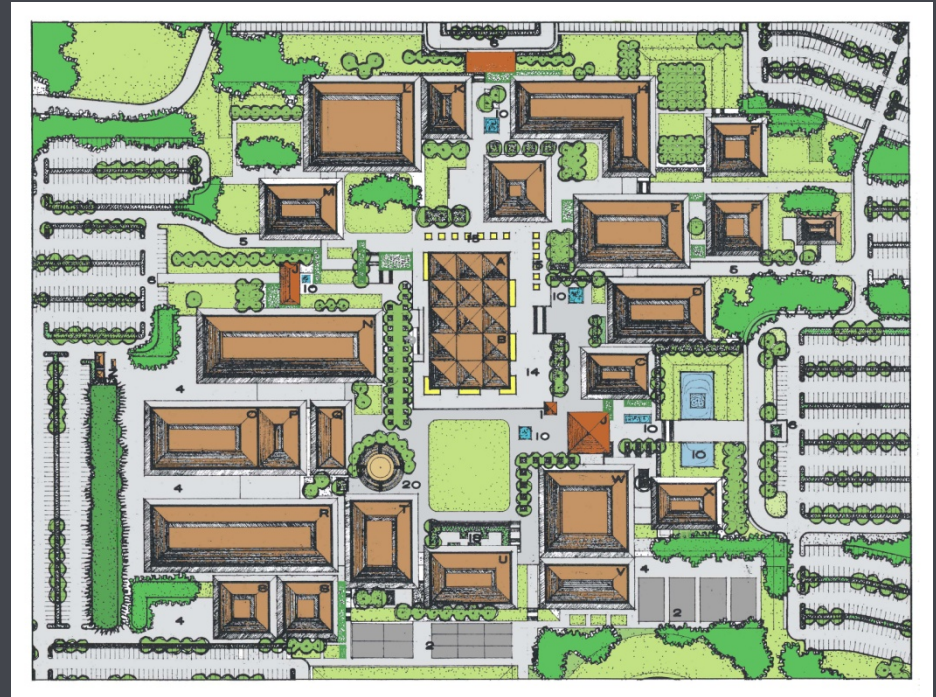




From Comprehensive Campus Plan – Balzhiser, Seder, & Rhodes, Architects:

Factors in visualizing campus form:

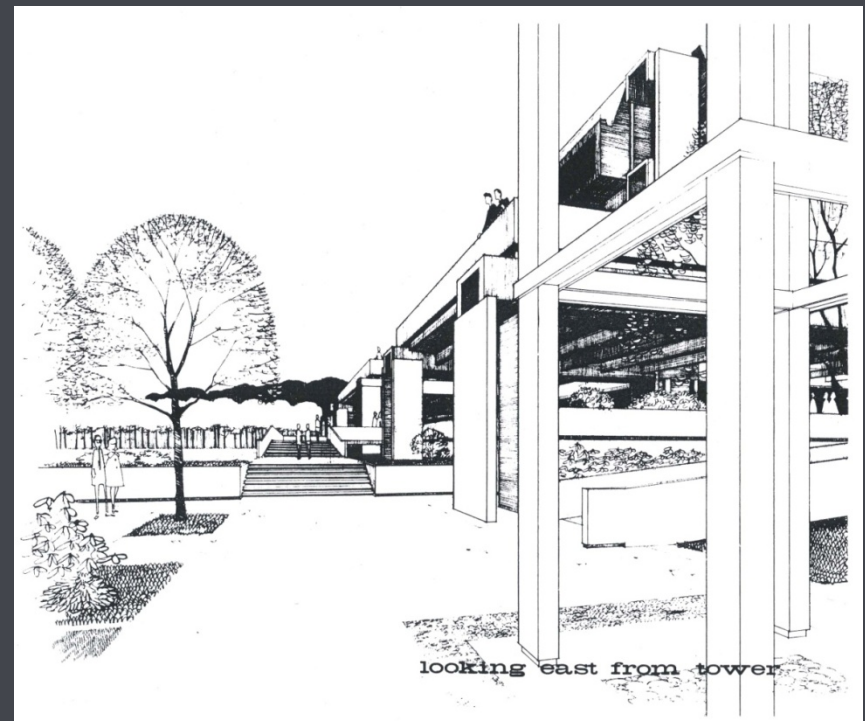
- Increased density: fairly ‘tight’ plan because of:
 - Community’s need for identifiable facility
 - Regenerative unity from proximity of students to each other, to instructors, to counselors
 - Parking and PE requirements
- (Sense of regenerative unity missing in most California campuses visited.)
- Diluted vitality of campus; reduced identity and unity.)



(Note: Original plans were black and white.)

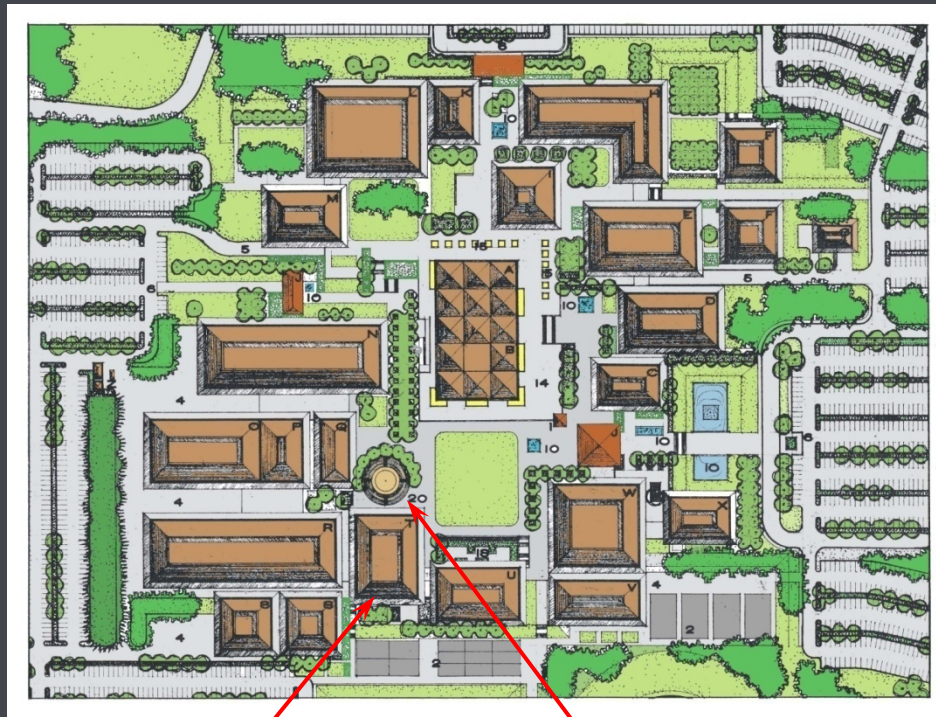
From Comprehensive Campus Plan – Balzhiser, Seder, & Rhodes, Architects:

- Campus organized around Center Building
 - Constant unifying reference
 - Sense of unity → inclusive character
 - Common to all campus activities
 - S half: Learning Resource Center
 - N half: Student Center
- Conscious attempt to mix technical and academic disciplines around Center Building.



From Comprehensive Campus Plan – Balzhiser, Seder, & Rhodes, Architects:

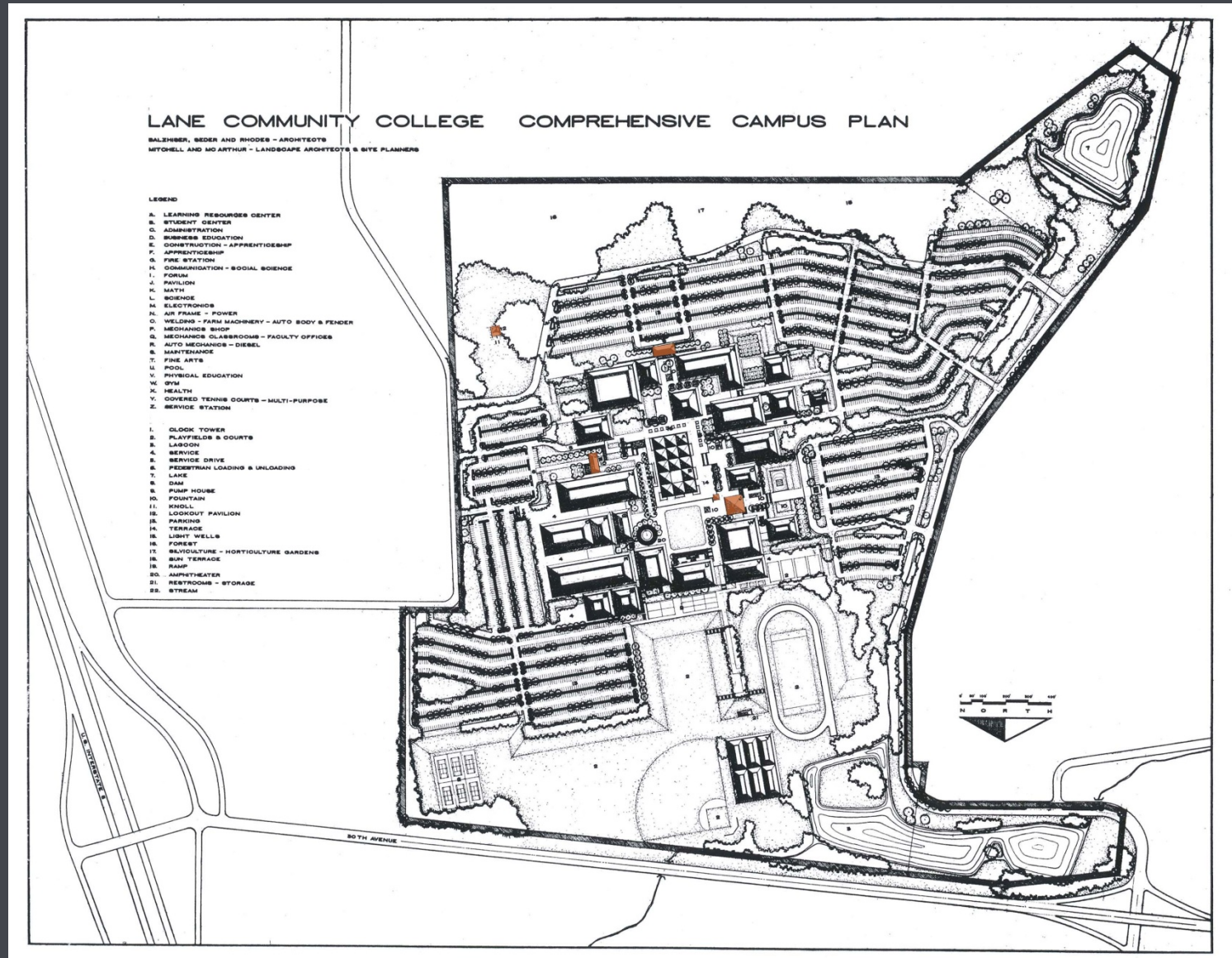
- Additional activity will be generated by amphitheater.
- Can be used informally for social and educational purposes.
- Can be used as outdoor theater.



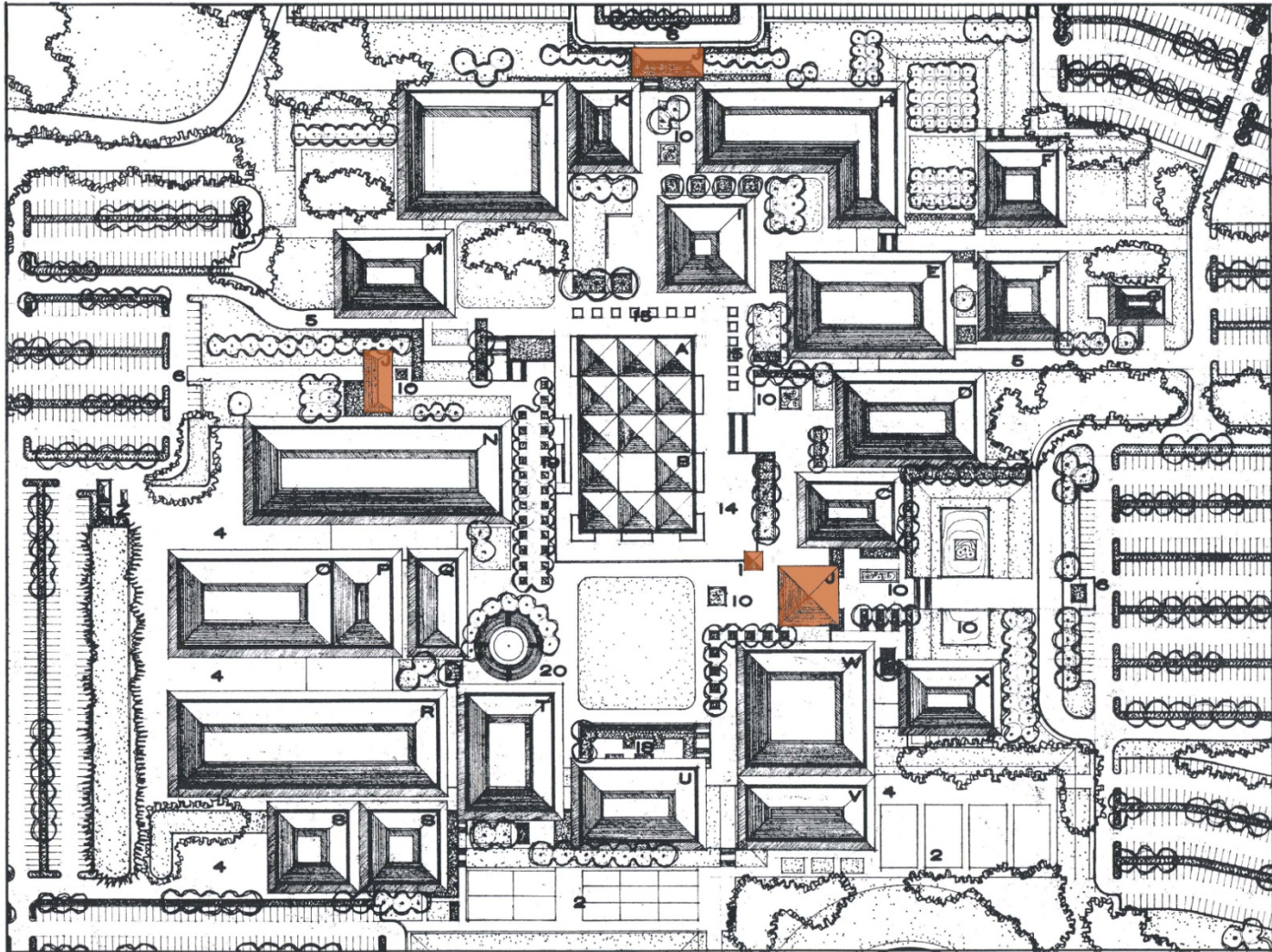
Performing Arts

Amphitheater

Landmarks and Pavilions



Landmarks and Pavilions



From Comprehensive Campus Plan – Balzhiser, Seder, & Rhodes, Architects:

- Sequence of visual experiences
 - Campus visible high on hill from 30th, with green in foreground.
 - Pavilion at each major entrance: Enhances feeling of entrance; serves as gathering/waiting space in inclement weather.



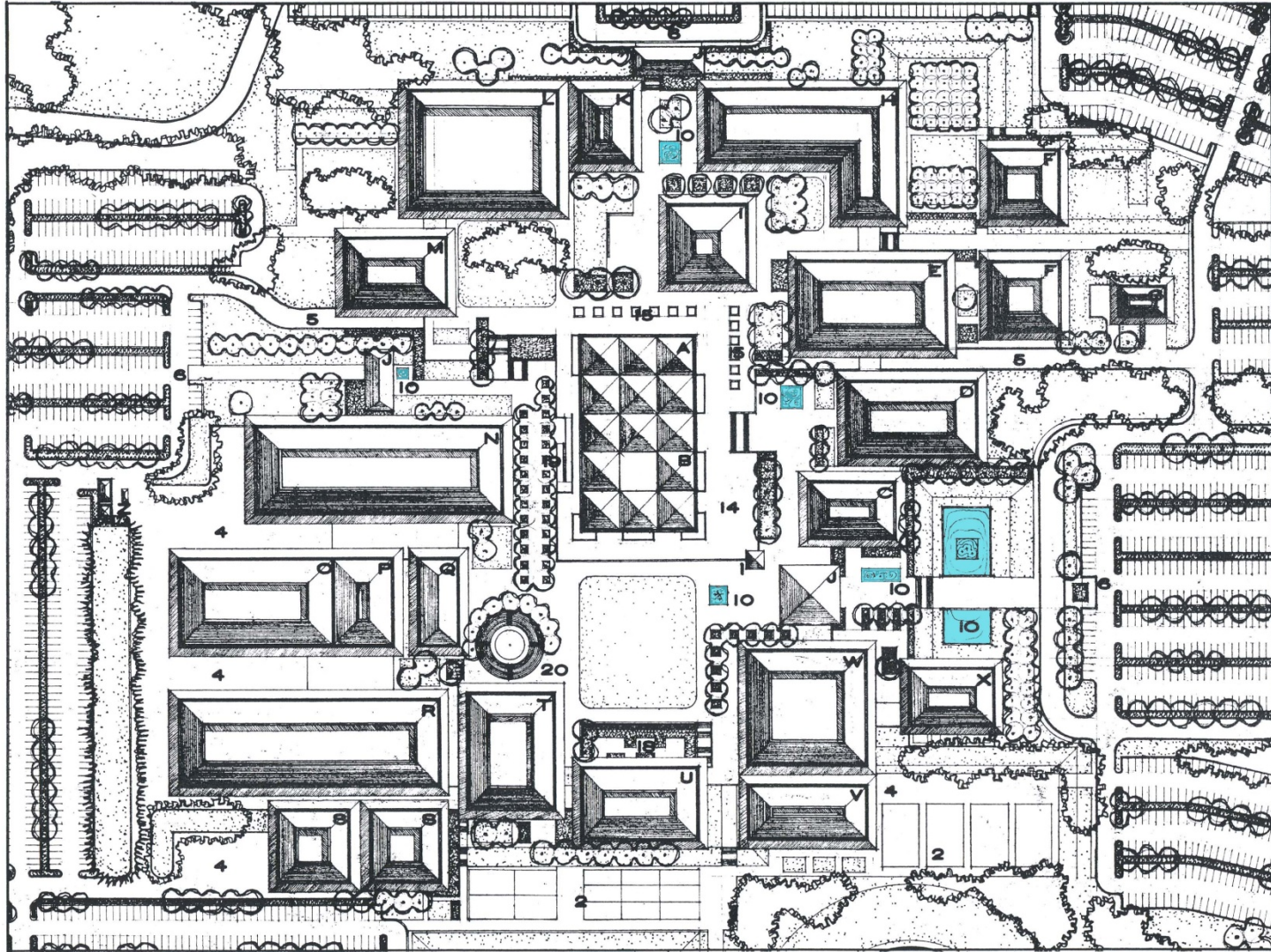
Looking east from west entrance
toward Admin and Center Building

From Comprehensive Campus Plan – Balzhiser, Seder, & Rhodes, Architects:

- Impact of automobile
 - Considerable impact
 - Must be handled with care to avoid making central campus appear to be oasis in desert of asphalt.
 - Variety of landform helps avoid large planes of parking.
 - Need buffer between campus proper, parking areas.
 - Buffer also complements feeling of arrival, avoids parking appearing continuous with campus.



Water

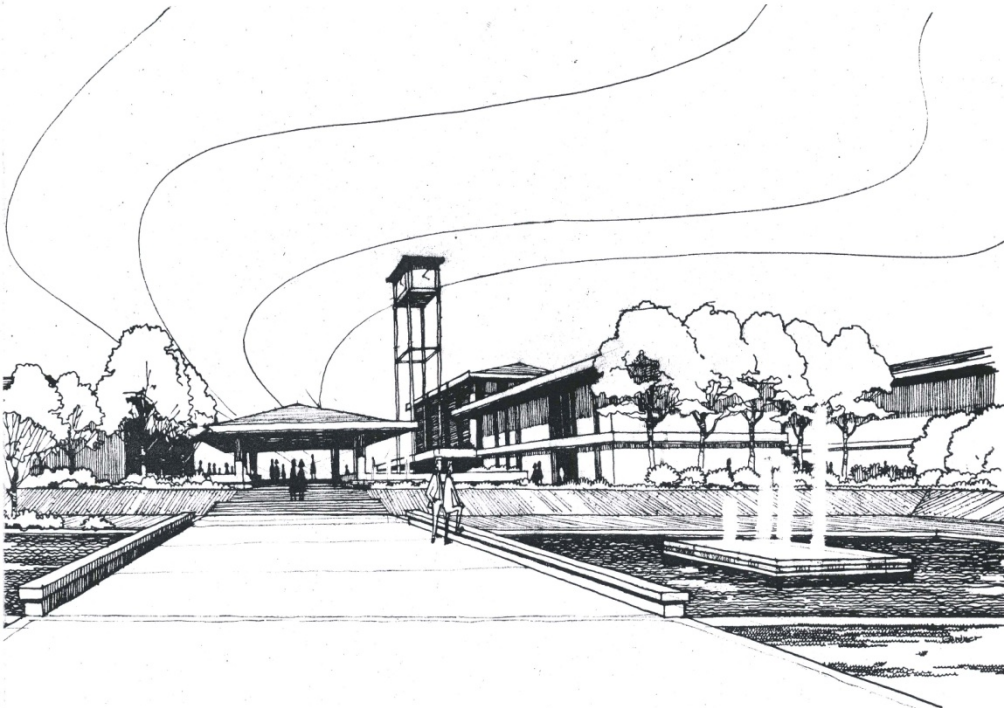


Plan features 6 fountains, dam, lake, and future recreational lake (sewage lagoons)

Fountains



looking north on middle level

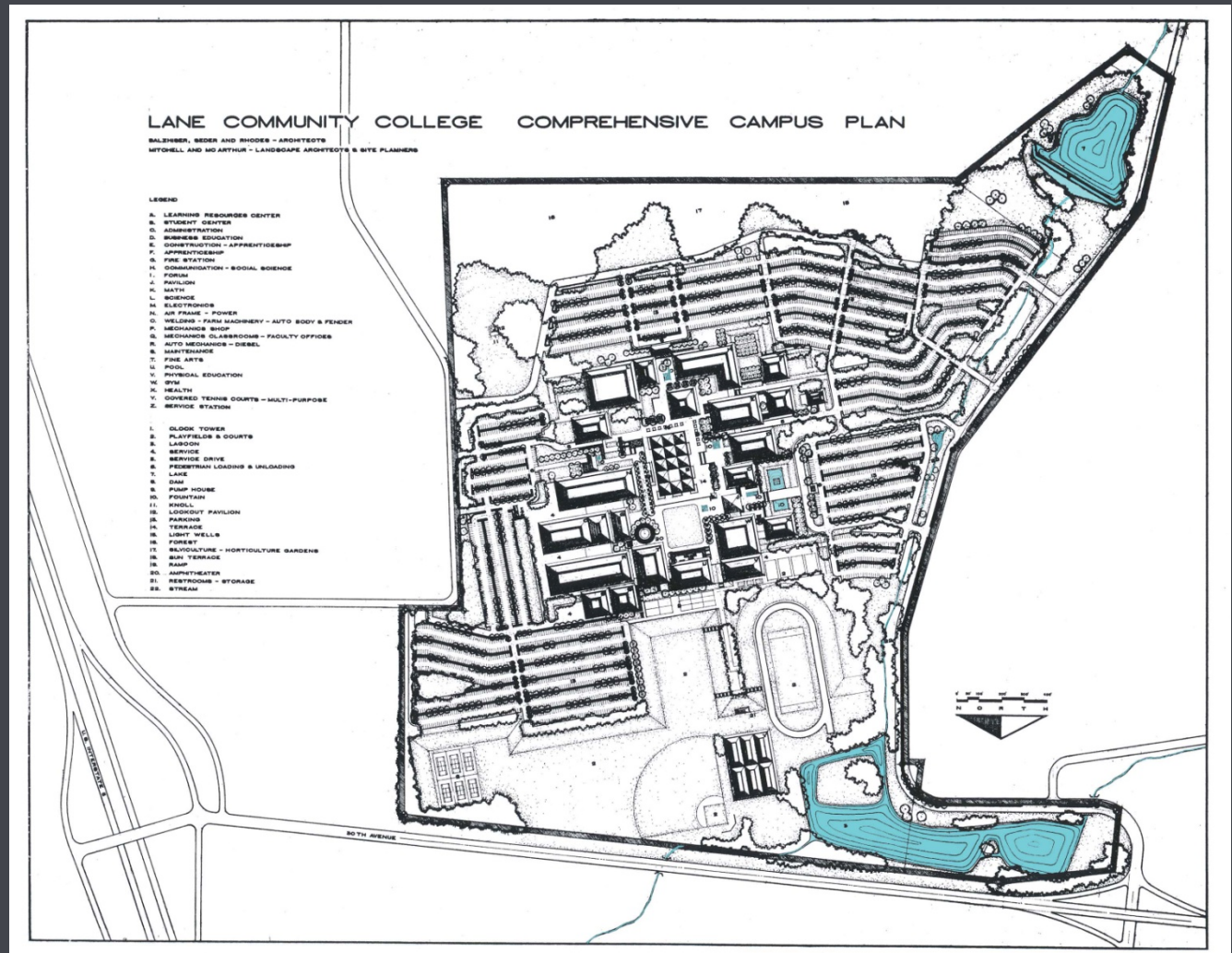


Looking north toward Admin and Building 2

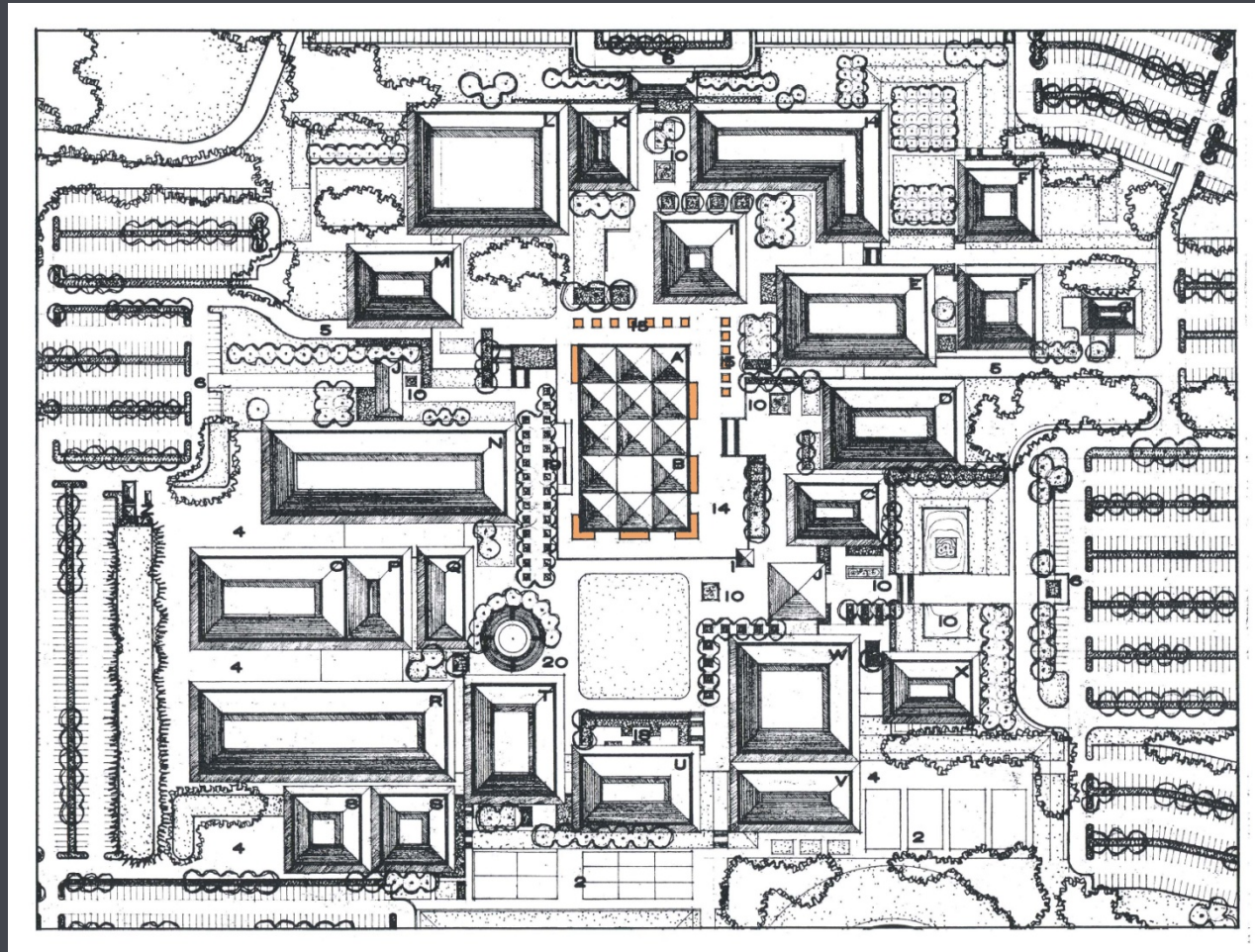
Looking east from west entrance toward Admin and Center Building

From Comprehensive Campus Plan – Balzhiser, Seder, & Rhodes, Architects:

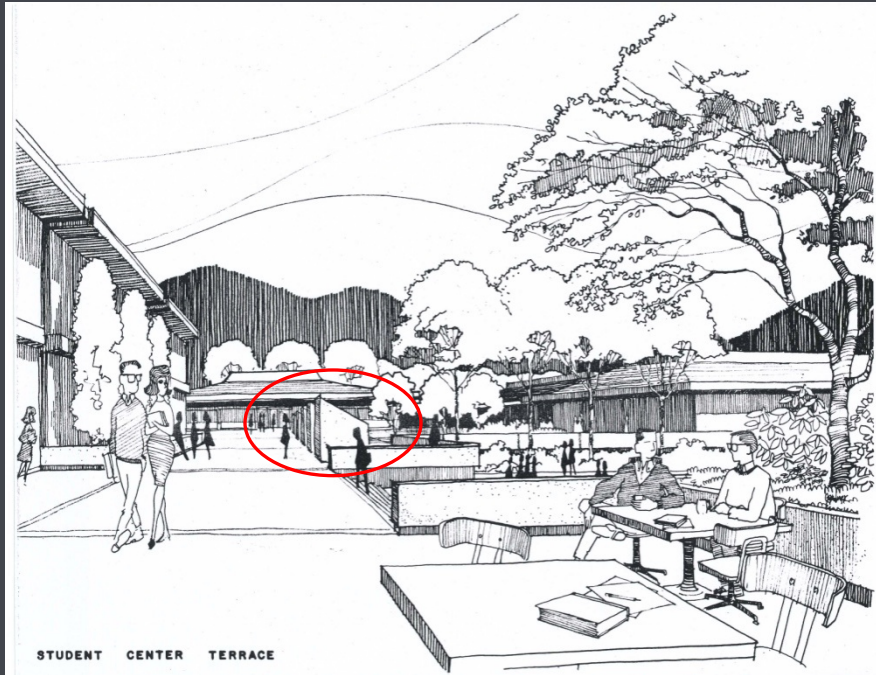
- Once campus connects to area sewer system, lagoon could be modified to create a recreational lake.



Light Wells



Light Wells



Looking south along Center Building toward Forum and Building 18



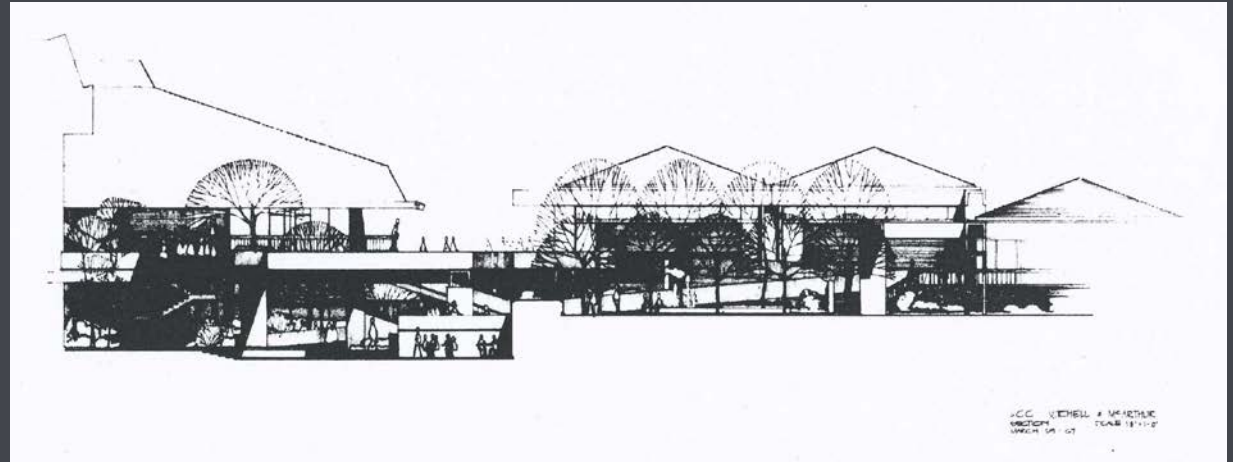
North of Science looking west



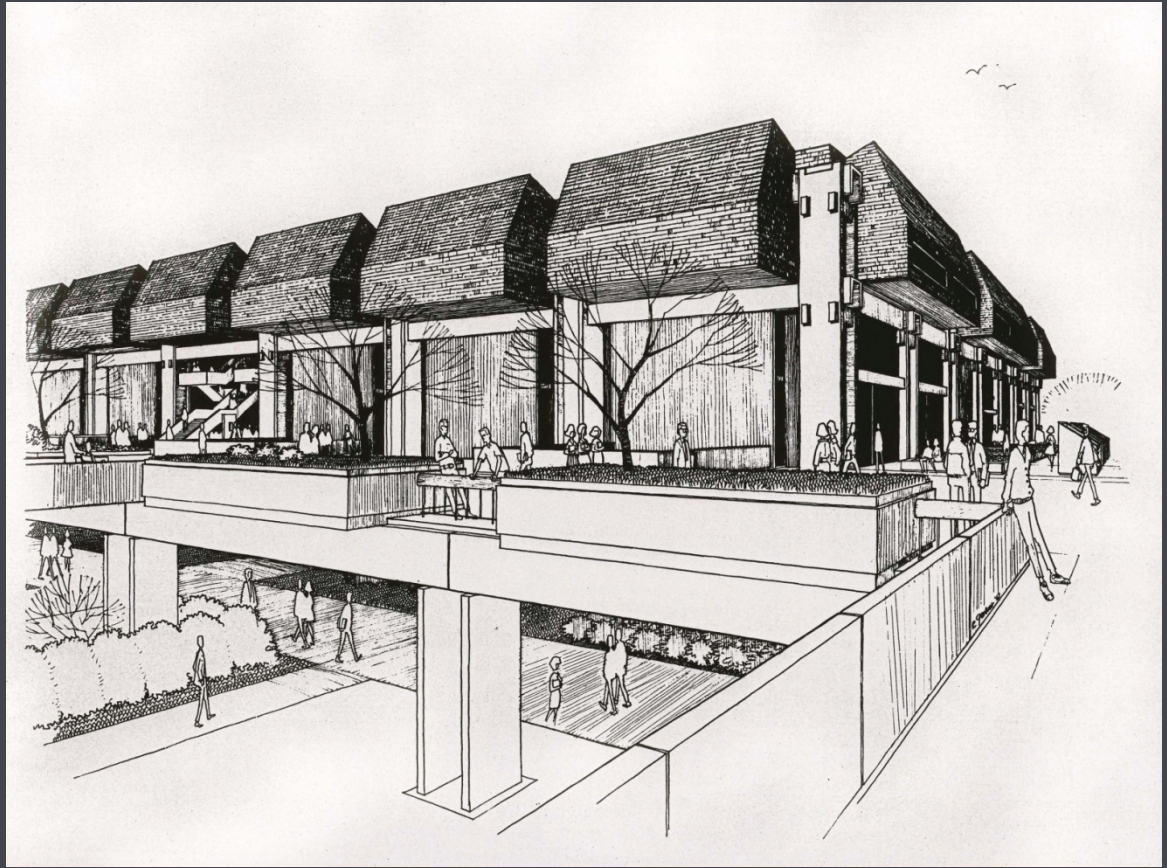
South side of Center Building

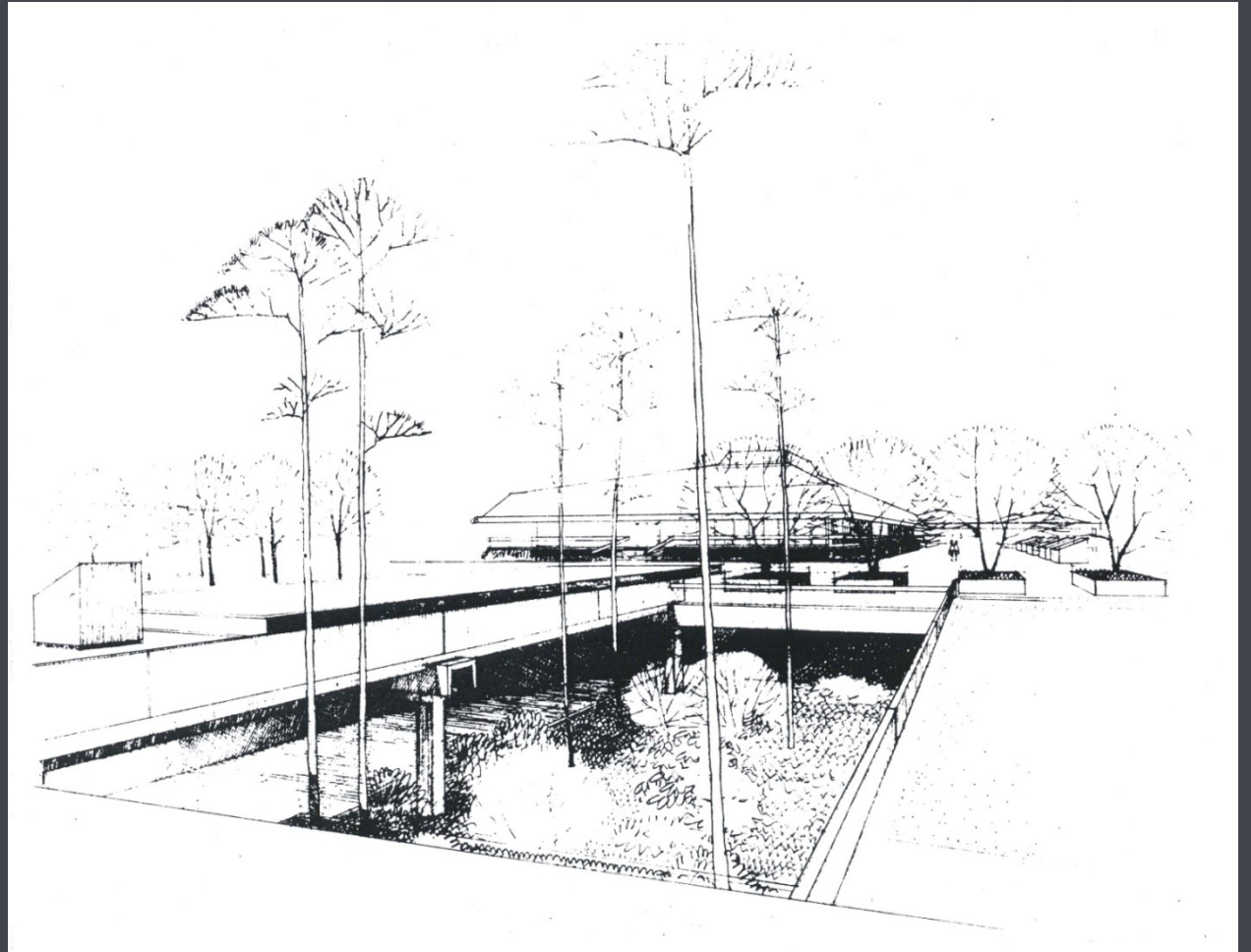
East of cafeteria

From Comprehensive Campus Plan – Balzhiser, Seder, & Rhodes, Architects:

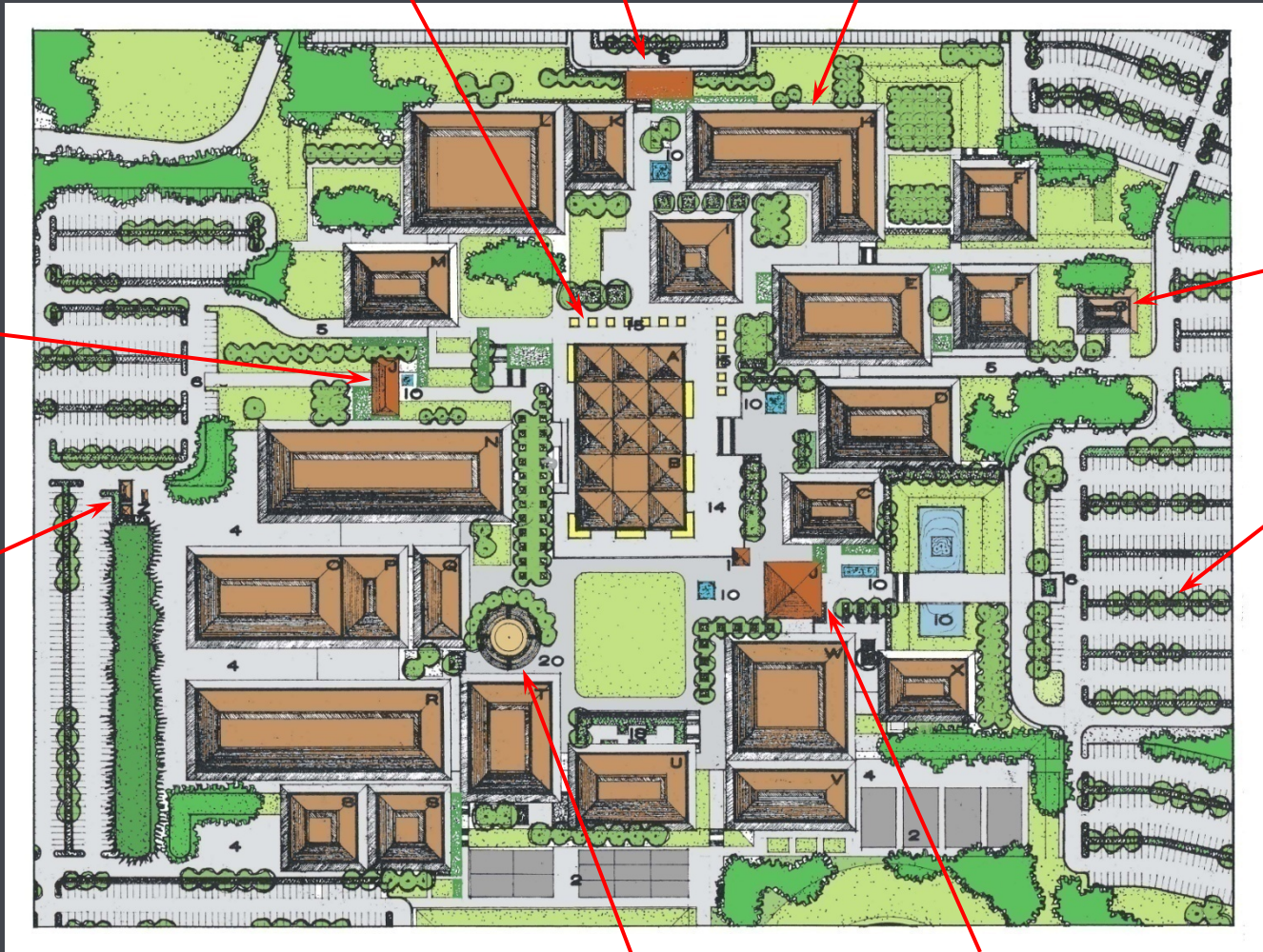


- Campus is conceived as two levels joined together by Center Building.
 - Lower level: Bristow Square, amphitheater
 - Upper level: activity centers around Forum, Learning Resource Center
- Building orientation approximately parallel to contour lines.
- Building placement creates numerous spaces between buildings, with variety of uses from large group activities to small groups to individual discussion or study.
- Buildings arranged for covered access between buildings.
 - With minor exceptions, covered access available throughout campus.





Light wells
Entrance pavilion, plaza, fountain
Building creating space around Forum



Entrance pavilion, fountain

Service station

Fire station

Trees fill parking lots

Amphitheater S of Performing Arts

Entrance pavilion, clock tower, multiple fountains

Forest Silviculture/
horticulture garden Forest

LANE COMMUNITY COLLEGE COMPREHENSIVE CAMPUS PLAN

SALENBERG, SEDER AND RHODES - ARCHITECTS
MITCHELL AND MO ARTHUR - LANDSCAPE ARCHITECTS & SITE PLANNERS

LEGEND

- A. LEARNING RESOURCES CENTER
- B. STUDENT CENTER
- C. ADMINISTRATION
- D. BUSINESS EDUCATION
- E. CONSTRUCTION - APPRENTICESHIP
- F. APPRENTICESHIP
- G. FIRE STATION
- H. COMMUNICATION - SOCIAL SCIENCE
- I. FORUM
- J. PAVILION
- K. MATH
- L. SCIENCE
- M. ELECTRONICS
- N. AIR FRAME - POWER
- O. WELDING - FARM MACHINERY - AUTO BODY & FENDER
- P. MECHANICAL SHOP
- Q. MECHANICAL CLASSROOMS - FACULTY OFFICES
- R. AUTO MECHANICS - DIESEL
- S. MAINTENANCE
- T. FINE ARTS
- U. POOL
- V. PHYSICAL EDUCATION
- W. GYM
- X. HEALTH
- Y. COVERED TENNIS COURTS - MULTI-PURPOSE
- Z. SERVICE STATION

- 1. CLOCK TOWER
- 2. PLAYFIELDS & COURTS
- 3. LARSON
- 4. SERVICE DRIVE
- 5. PEDESTRIAN LOADING & UNLOADING
- 6. LAKE
- 7. DAM
- 8. PUMP HOUSE
- 9. FOUNTAIN
- 10. KNOLL
- 11. LINDSEY PAVILION
- 12. PARKING
- 13. TERRACE
- 14. LIGHT WELLS
- 15. FOREST
- 16. SILVICULTURE - HORTICULTURE GARDENS
- 17. SUN TERRACE
- 18. RAMP
- 19. APPRENTICE
- 20. RESTROOMS - STORAGE
- 21. STREAM



Dam and lake

Trees →
"parking groves"

Stream

Future recreational lake