



LCC Conceptual Vision

Plan Update

September 2010

The University of Oregon Urban Design Lab

Mark L. Gillem, PhD, AIA, AICP
Director

Barry I. Gordon, MLA, MCRP
Adjunct Research Assistant

Precedent Studies

- Thirteen Community Colleges
- On-Campus Housing
- Curriculum-Related Businesses
- Campus Planning Trends
- Building Typology
- Campus Character



POPULATION

Full Time Students --- 5,429
Total Student Population --- 42,214
Number of Faculty --- 976
Number of Staff --- 300
Total Campus Population --- 43,490

HOUSING

Number of Dorms --- 2
Bed Count --- 144
Type --- Traditional

LAND USE

Number of Buildings --- 50
Gross Square Footage --- 600,000
Acreage of Land Holdings --- 300
Floor Area Ratio --- .05
Number of Parking Spaces --- 2,500
Acres of Parking --- 25



CAMPUS CHARACTER



BUILDING TYPOLOGY

User Participation

List of Meetings & Reviews

2009

- October 2, Kick-off
- October 19, Workshop 1
- October 24, Workshop 2
- October/December, Studio Reviews

2010

- February 3, Board Update
- February 12, VPG, Options Review
- March, Studio Review
- May 12, Board Update
- May 25, LCC Open House
- May 26, Athletic Complex Analysis
- June 2, Athletic Complex Meeting
- August 24, Conceptual Vision Review

Numerous Conference Calls & Individual Meetings



Vision

To create a campus that has **appropriate infrastructure** that fosters educational excellence through **sustainable building and landscape practices** organized around **equitable accessibility** contributing to a **complete community**.

Goal 1: Appropriate Infrastructure.

Layout a strategy that incorporates camouflaged support services into the campus core that are efficient and logical.

Goal 2: Sustainable Building and Landscape Practices.

Produce a plan that maximizes environmental stewardship and green technologies through attractive, well designed, safe, convenient, and comfortable buildings and outdoor spaces.

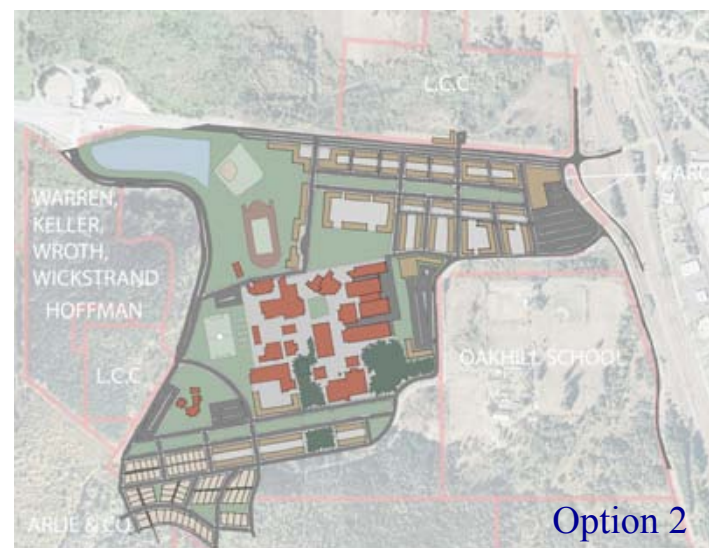
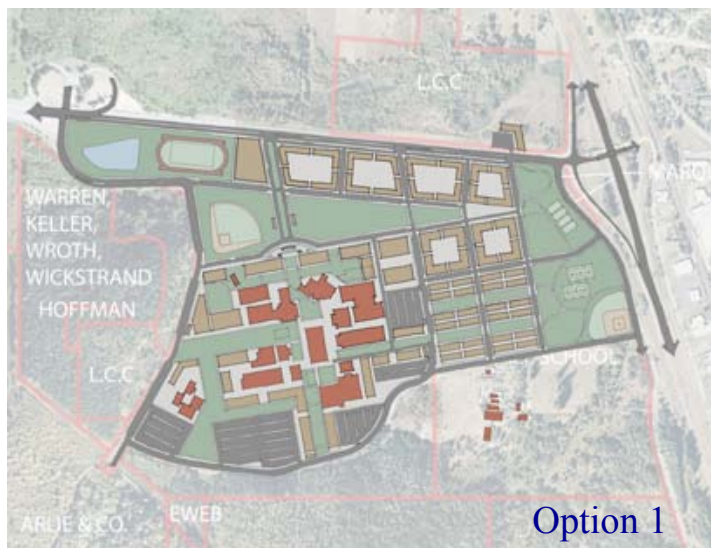
Goal 3: Equitable Accessibility.

Provide easily identifiable hierarchy of gateways, roadways and pathways that is safe, convenient, and comfortable.

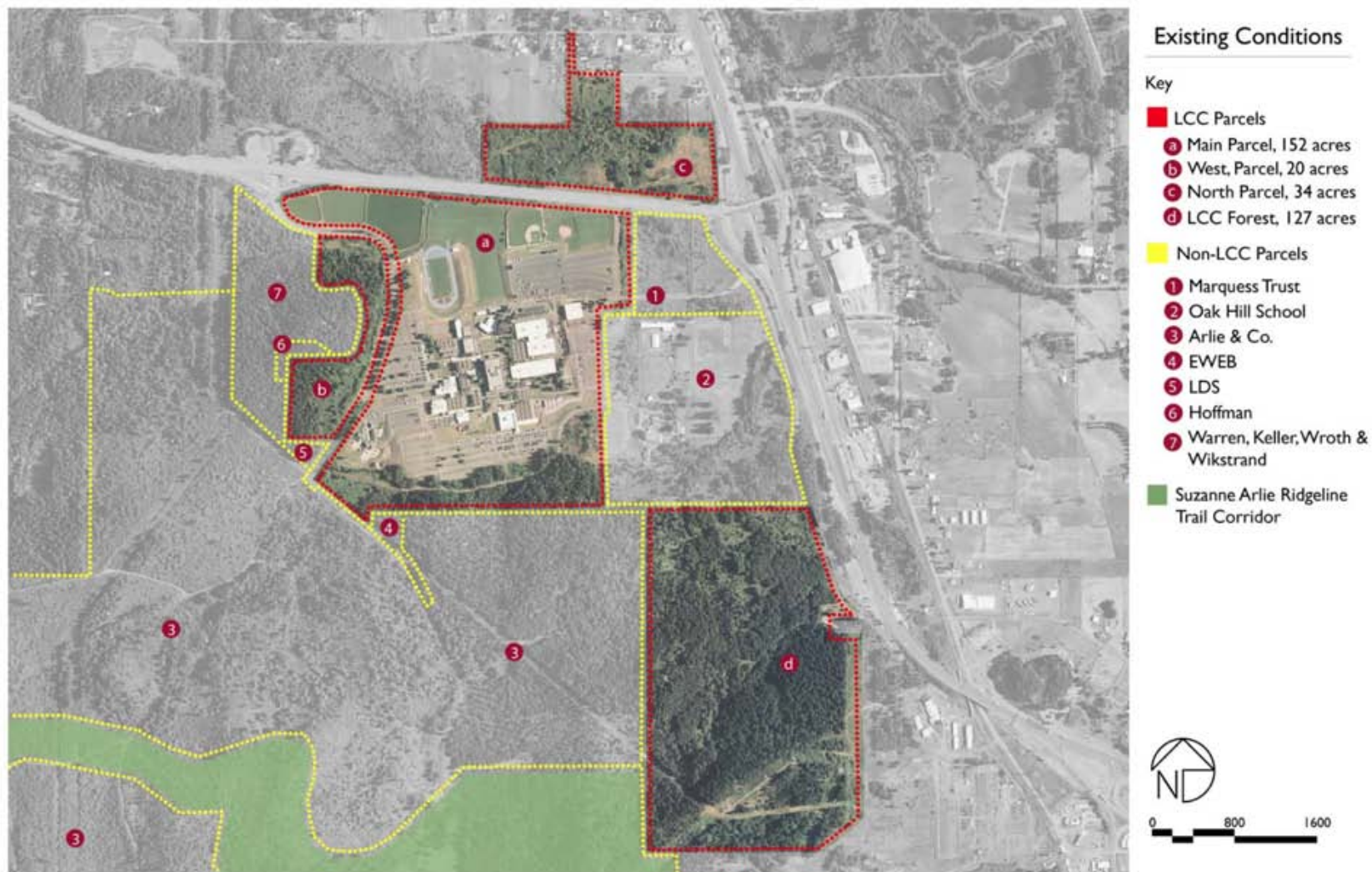
Goal 4: Complete Community.

Provides places to learn, live, shop and play that help create a well-balanced environment for all Lane County residents.

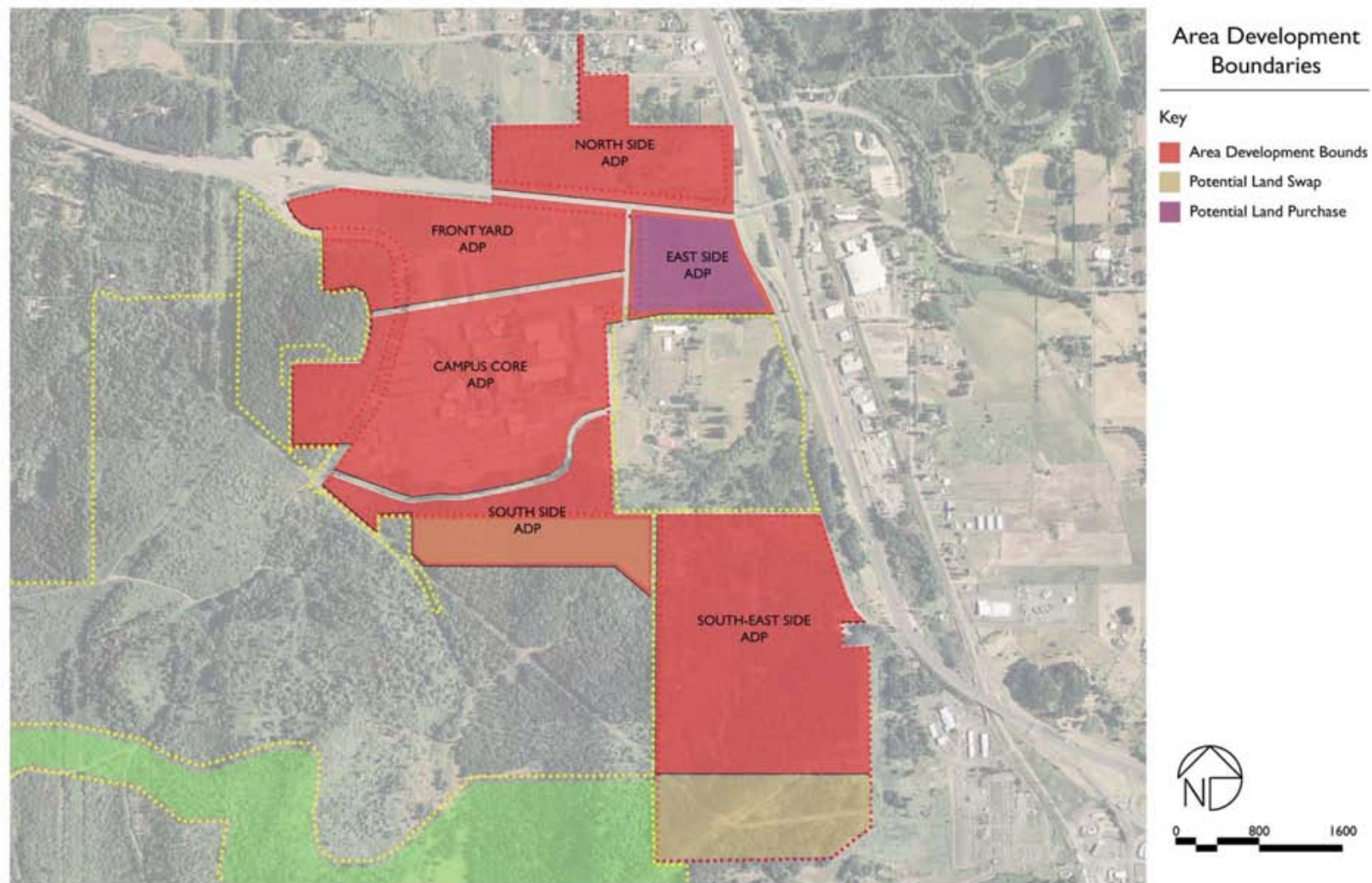
Development Options



Parcel Map



Development Boundaries



Development Option 5a



Development Option LCC Owned Land

Key

- Existing Buildings
- Notional Buildings
- Grass
- Roads
- Pathways
- Water
- Removed

ATTRIBUTES

PARKING

on street --- 987 spaces
off street --- 1,966 spaces
spaces lost --- 286

NEW BUILDINGS (SQ FT.)

minimum --- 2,346,729
maximum --- 5,510,818

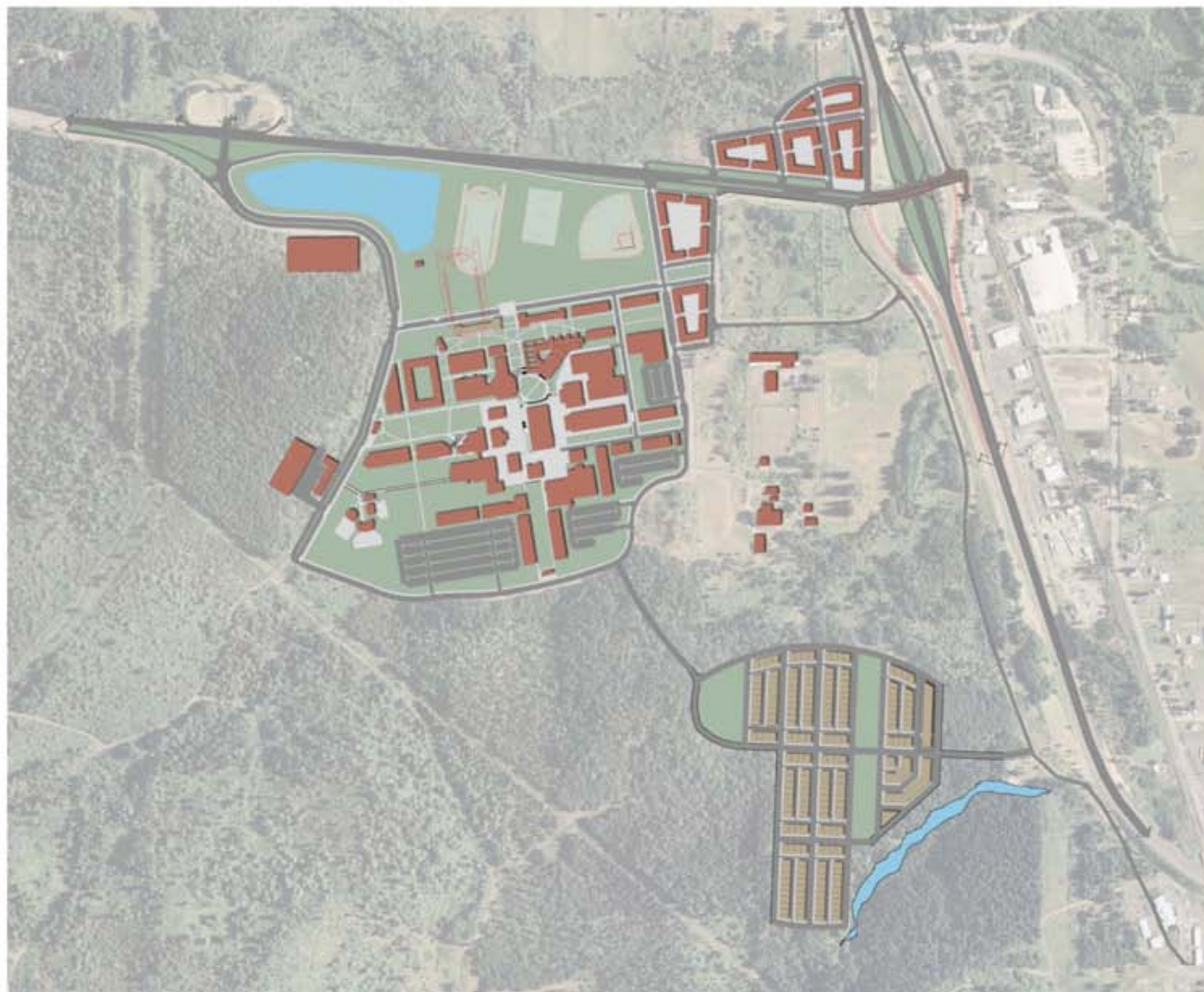
BUILDABLE PARCEL AREA

51 acres



0 800 1600

Development Option 5b



Development Option Land Swap

Key

- Existing Buildings
- Notional Buildings
- Grass
- Roads
- Pathways
- Water
- Removed

ATTRIBUTES

PARKING

on street --- 2,209 spaces
off street --- 1,966 spaces
spaces gained --- 936

NEW BUILDINGS SQ. FT.)

minimum --- 3,489,909
maximum --- 7,892,664

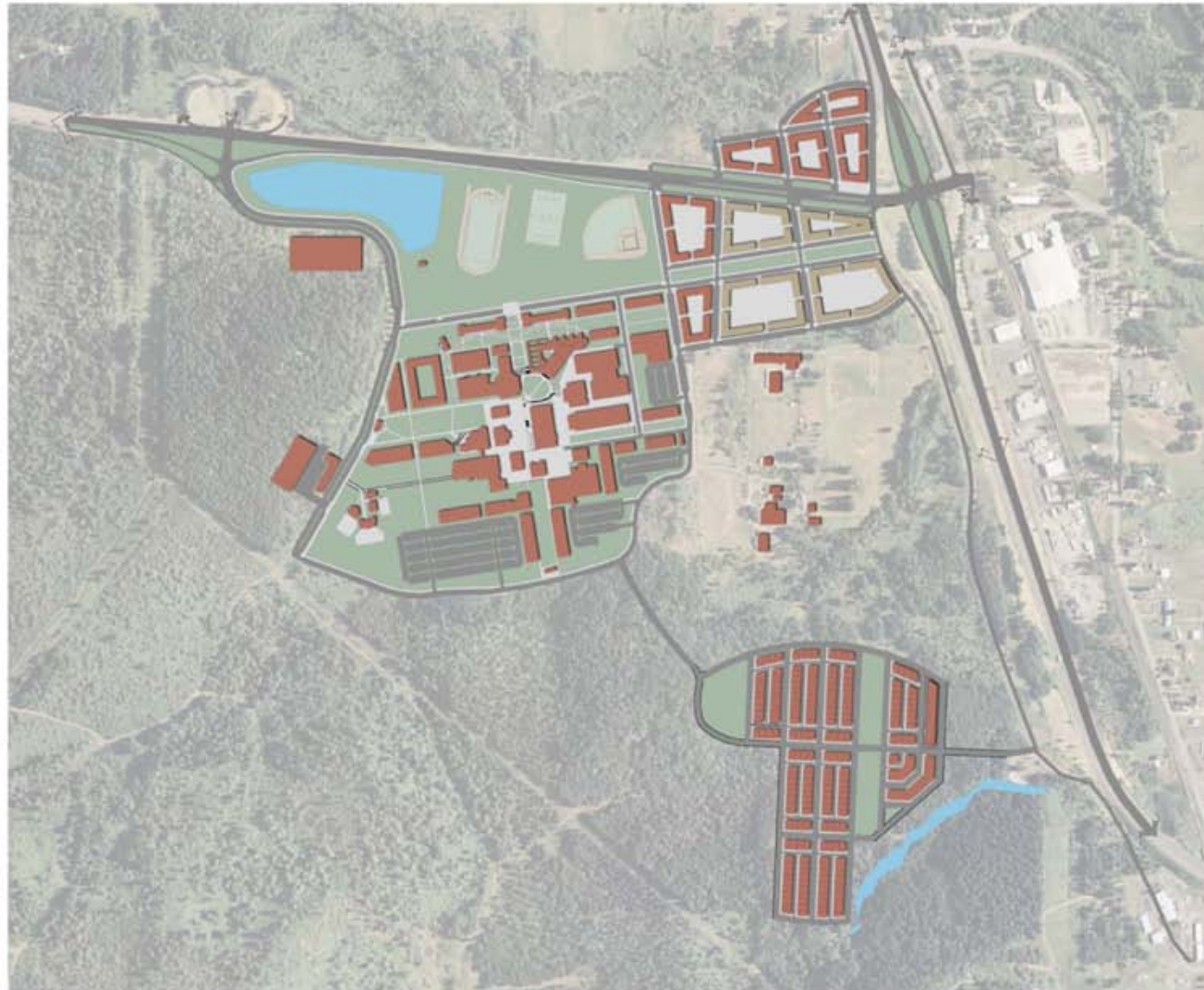
BUILDABLE PARCEL AREA

85 acres



0 800 1600

Development Option 5c



Development Option Parcel Purchase

Key

- Existing Buildings
- Notional Buildings
- Grass
- Roads
- Pathways
- Water
- Removed

ATTRIBUTES

PARKING

on street --- 2,526 spaces
off street --- 3,196 spaces
spaces gained --- 2,483

NEW BUILDINGS (SQ. FT.)

minimum --- 3,743,211
maximum --- 8,905,872

BUILDABLE PARCEL AREA

119 acres



0 800 1600

Next Steps

- Next
- Next
- Next



LCC Conceptual Vision

Plan Update

September 2010

The University of Oregon Urban Design Lab

Mark L. Gillem, PhD, AIA, AICP
Director

Barry I. Gordon, MLA, MCRP
Project Manager