



LCC Perimeter Master Plan

Framework Plan Update

May 2010

Scope

Prepare a perimeter master plan for LCC that uses the land as a resource to support the educational mission of the institution.

To create a campus that has **appropriate infrastructure** that fosters educational excellence through **sustainable building and landscape practices** organized around **equitable accessibility** contributing to a **complete community**.

Study Area

5

30th

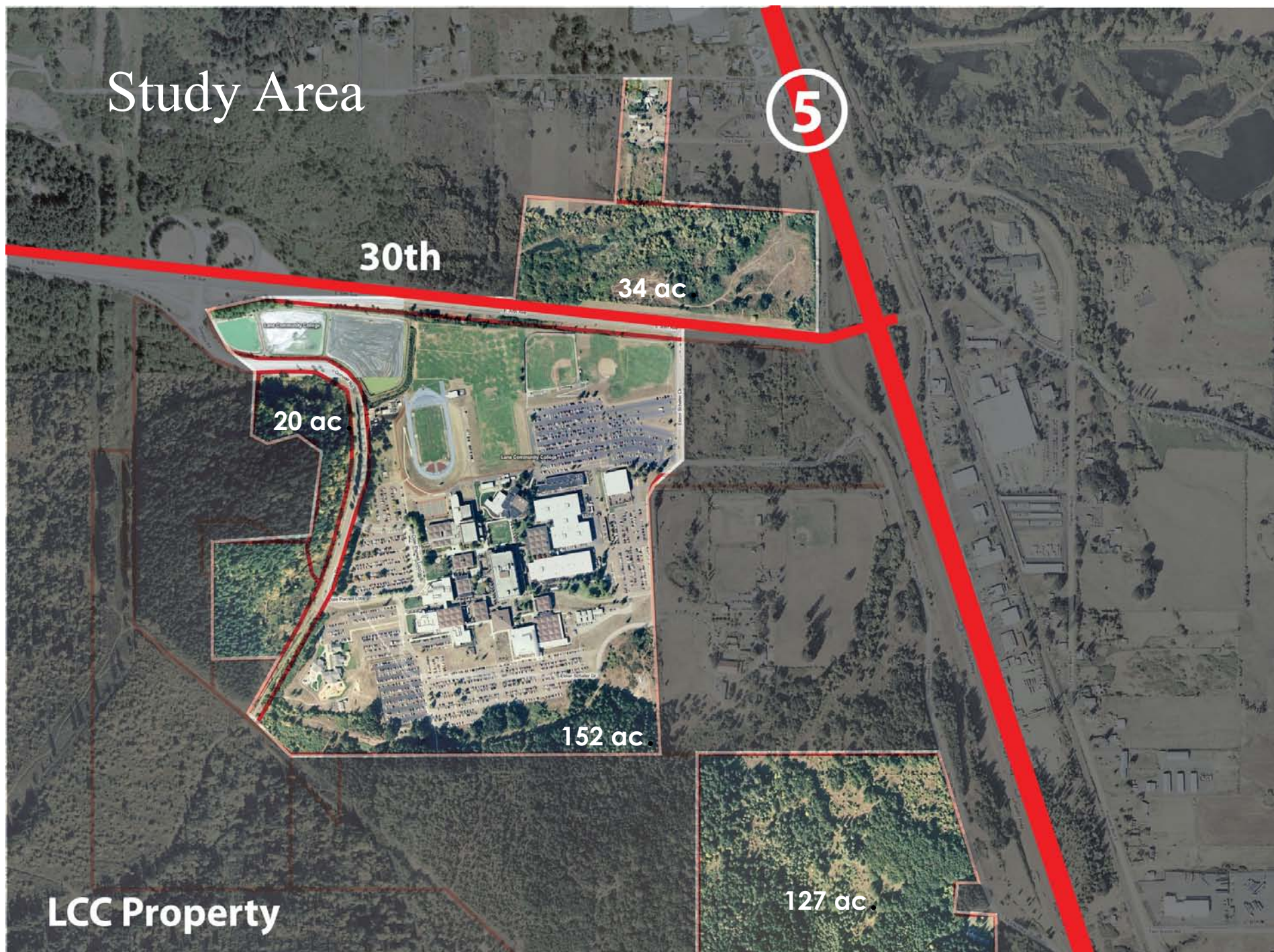
34 ac

20 ac

152 ac

LCC Property

127 ac



Adjacent Parcels

5

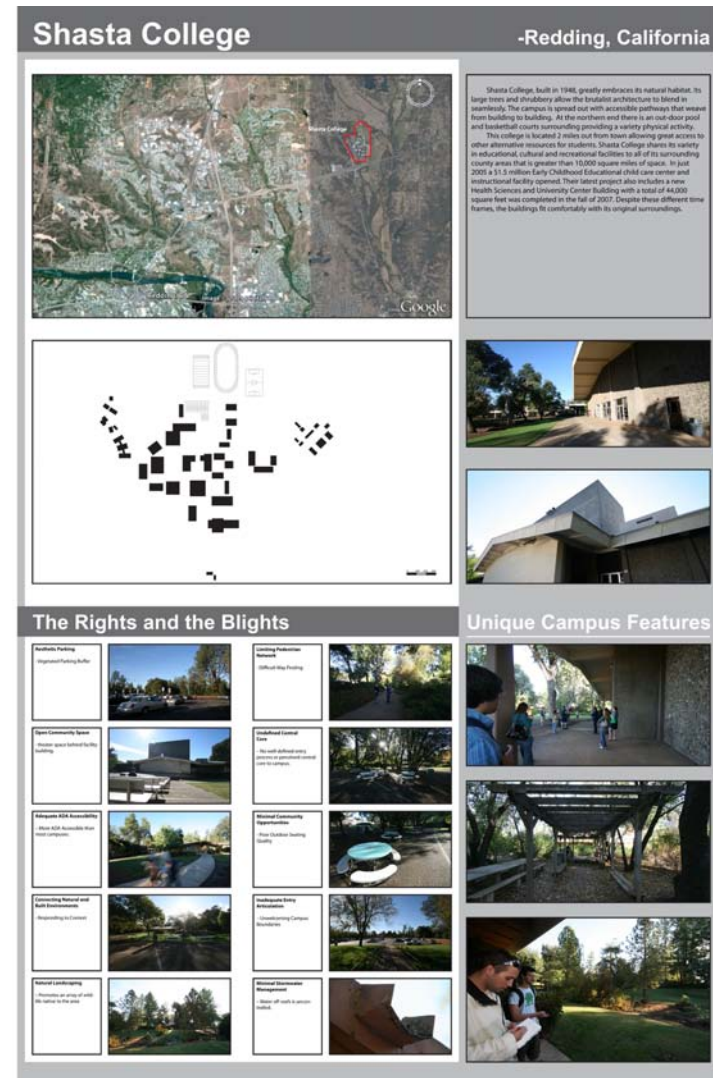
30th



Precedent Studies

Students traveled to community colleges in Washington, Oregon, and California to learn how other campuses use land and generate revenue.

- On-Campus Housing
- Curriculum-Related Businesses



Collaborative Workshops

KEY IDEAS

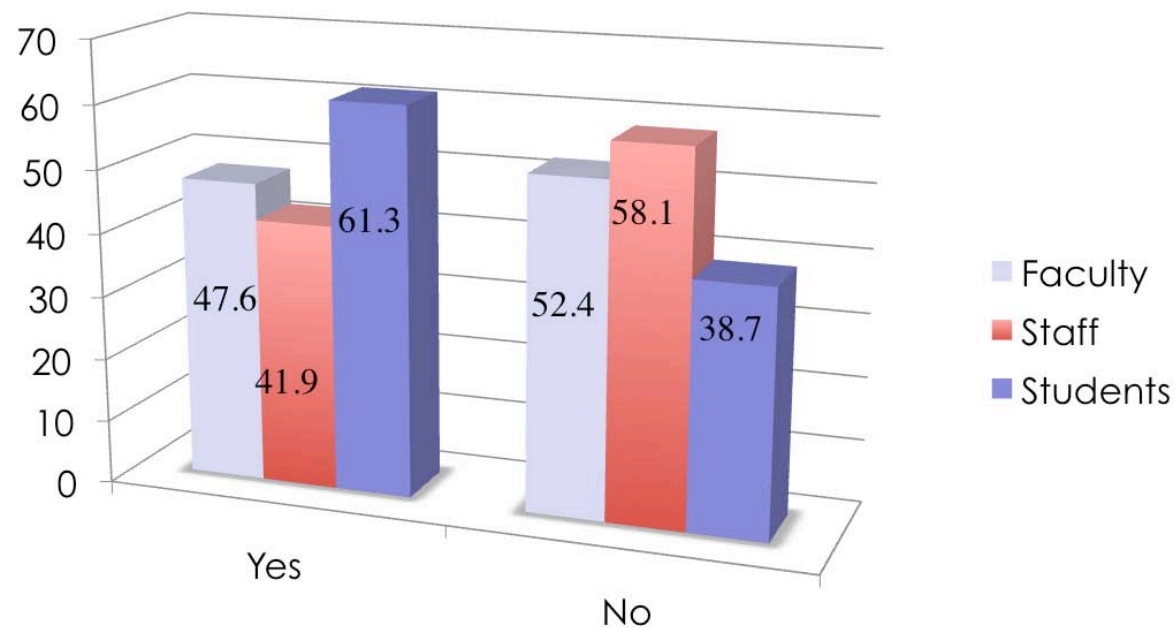
- Connect to other LCC parcels
- Develop along 30th Avenue
- Provide more campus green spaces
- Allow for housing of various types
- Improve wayfinding throughout campus
- Connect new facilities to educational program
- Look for alternative parking solutions
- Consider revisions to campus core that improve civic structure



Community Survey

Sent to 14,000 emails; 1,454 completed surveys

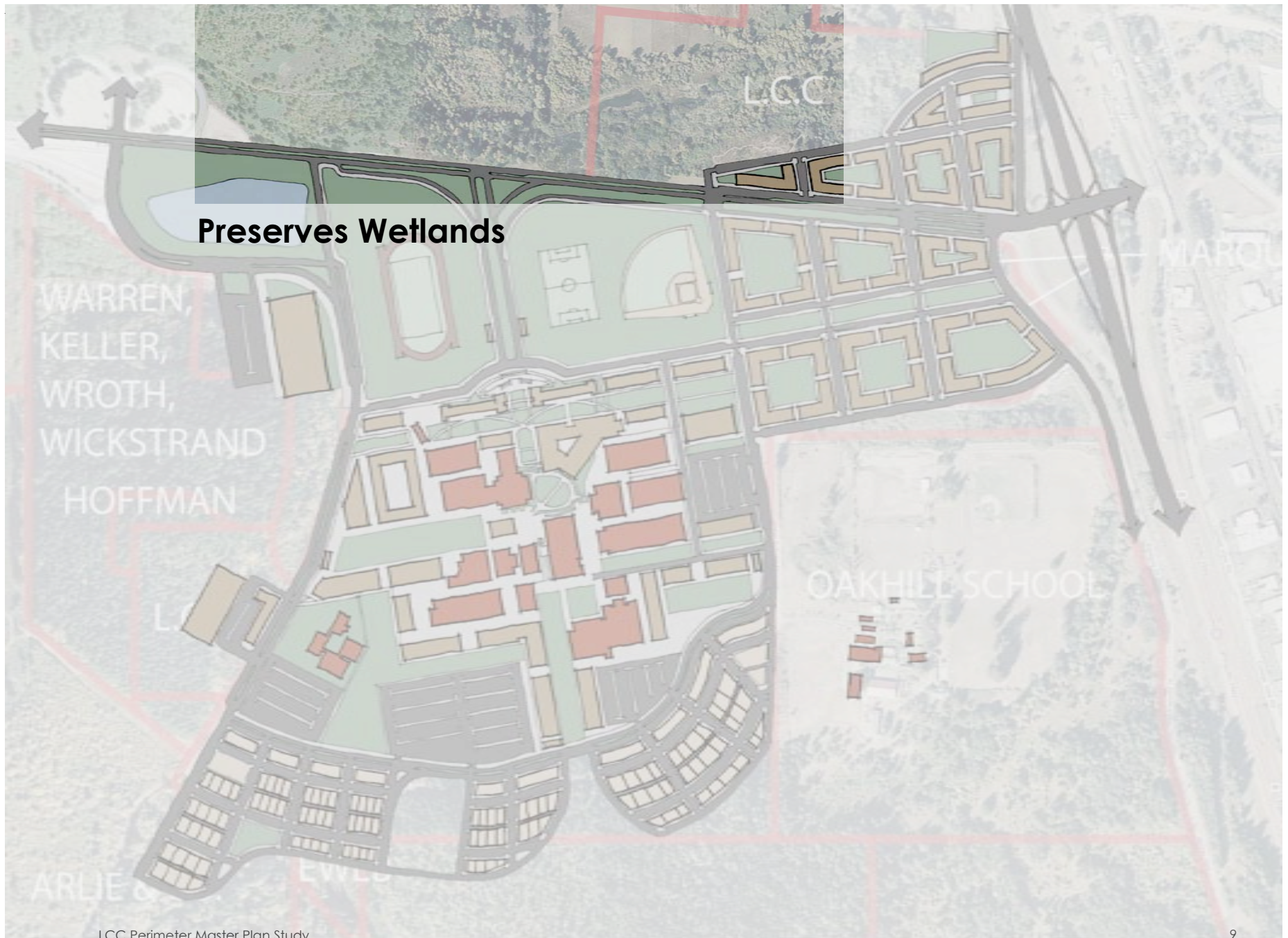
Would you consider living on or near campus?





0 800 1600

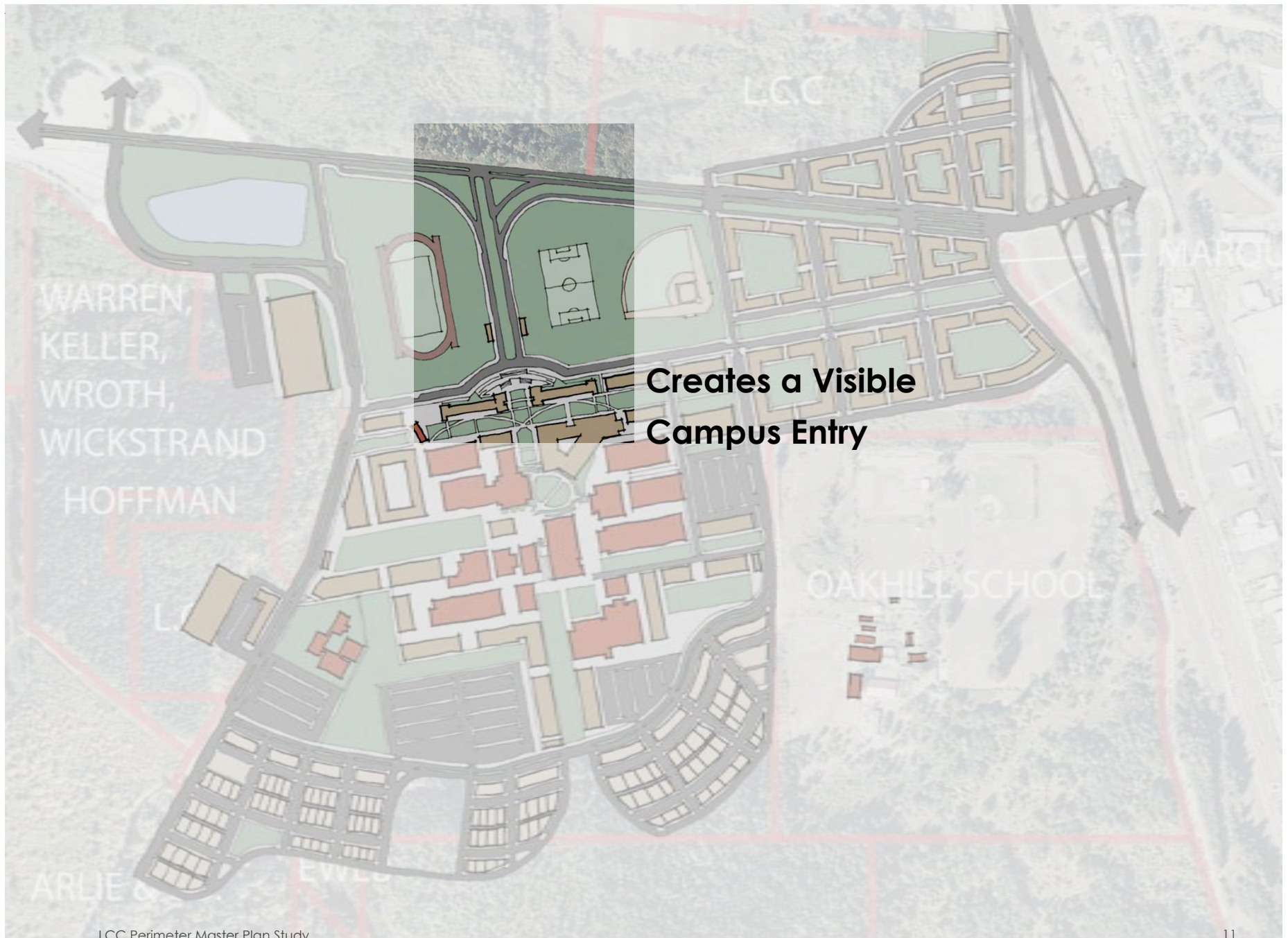
Alternative 1 Framework Plan



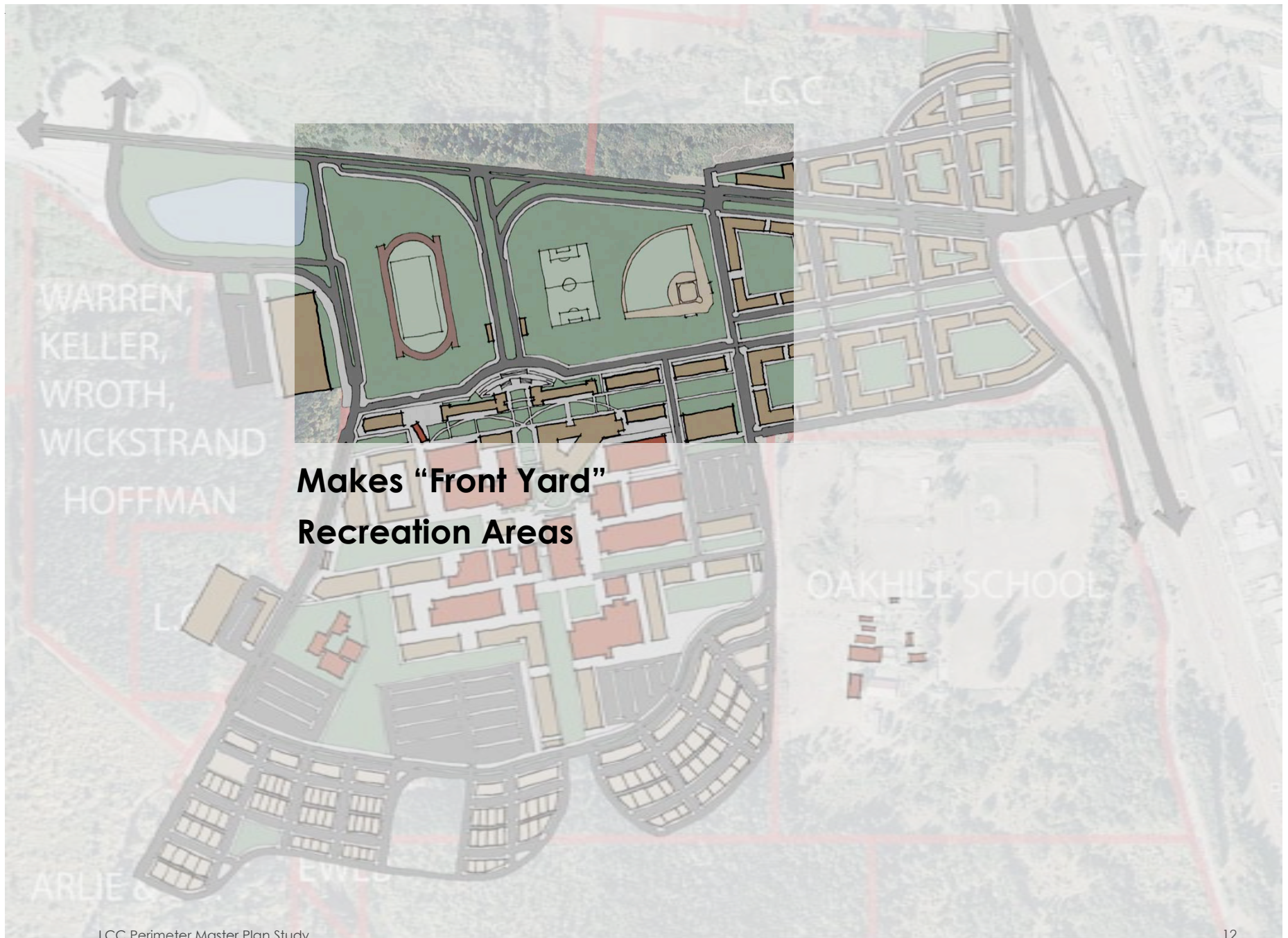
Alternative 1 Framework Plan



Alternative 1 Framework Plan



Alternative 1 Framework Plan



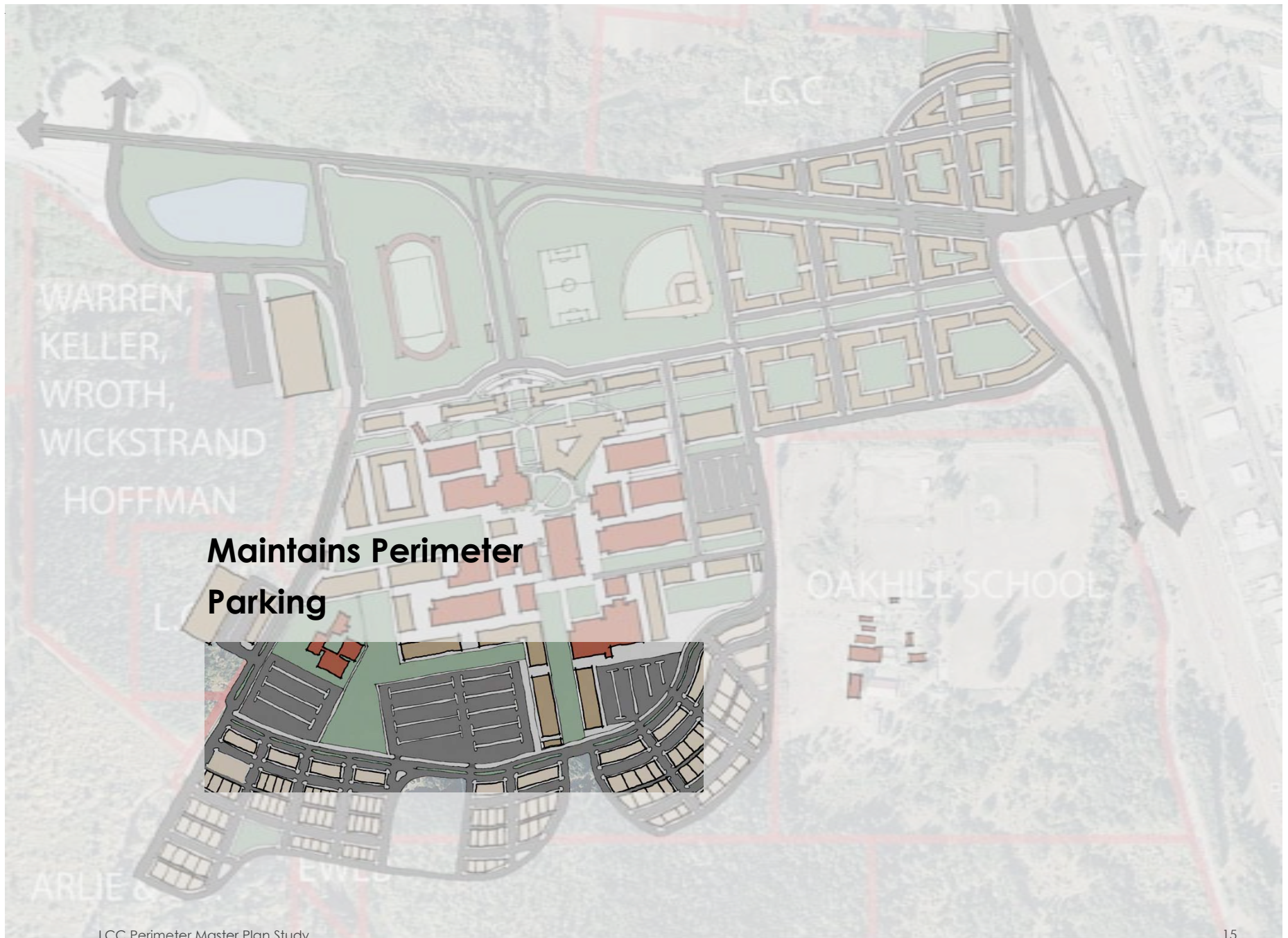
Alternative 1 Framework Plan



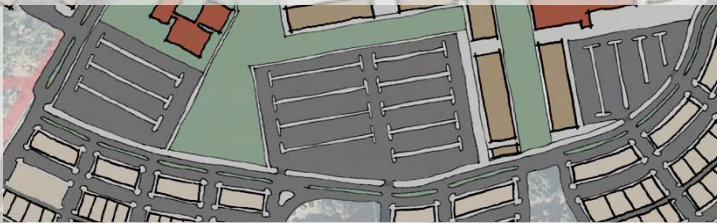
Alternative 1 Framework Plan



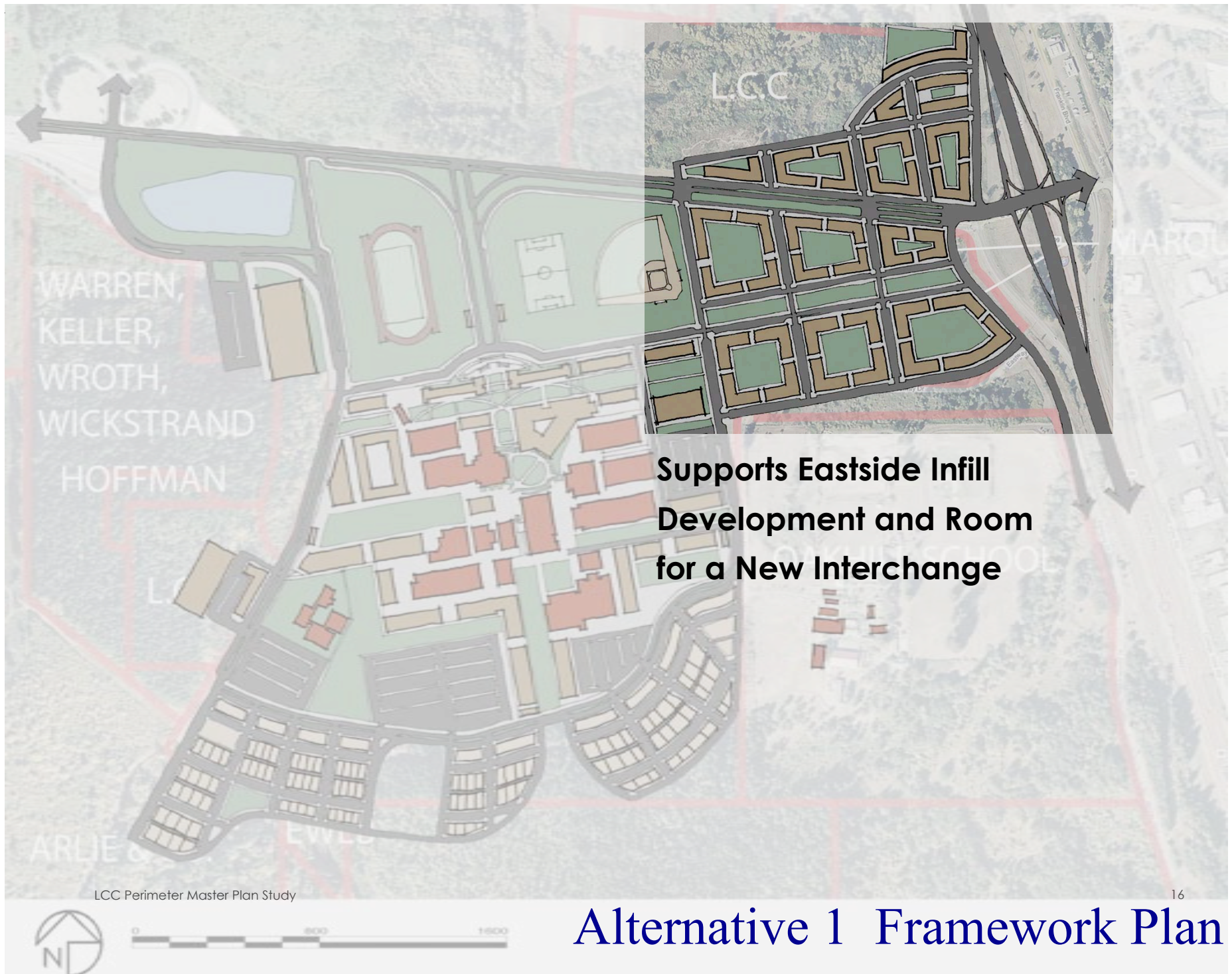
Alternative 1 Framework Plan



**Maintains Perimeter
Parking**



Alternative 1 Framework Plan



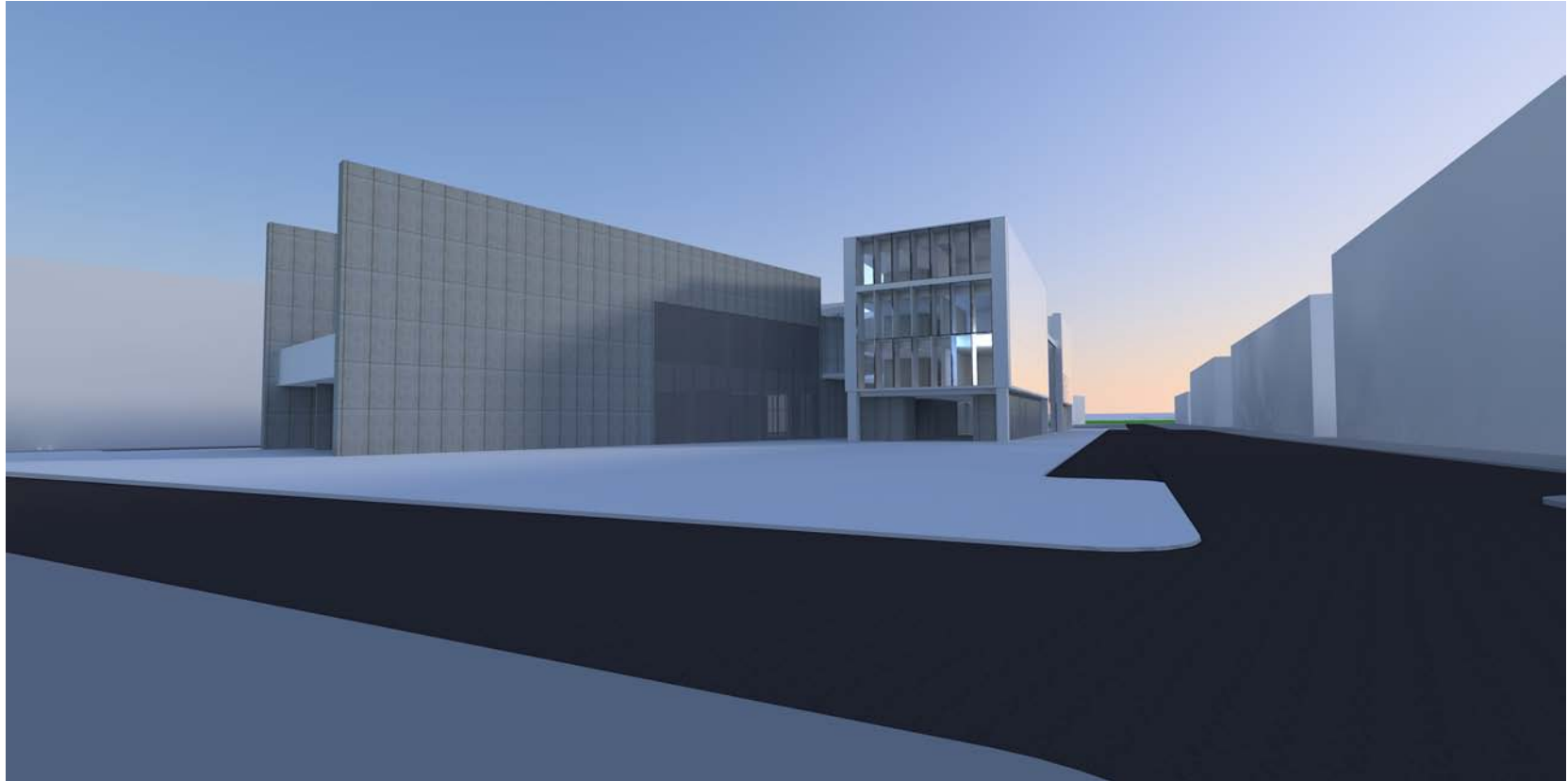
- 
- The background is an aerial photograph of the LCC campus. Overlaid on the map are various colored shapes representing proposed development: green for landscaped quads, blue for a pond, and tan/brown for building footprints and parking lots. Labels on the map include 'LCC' at the top, 'WARREN, KELLER, WROTH, WICKSTRAND, HOFFMAN' on the left, 'OAKHILL SCHOOL' on the right, and 'ARLIE & EVLE' at the bottom left. A road with arrows indicating traffic flow runs along the right side. A scale bar and north arrow are at the bottom left.
- Campus quads improve wayfinding and accessibility
 - On-campus housing reduces parking needs on campus
 - Could reduce carbon emissions by over 1M pounds per year
 - Up to 5.1 million sq. ft. of new buildings and over 2,000 new parking spaces
 - Medians in roads and bioswales in parking lots allow paved surfaces to mitigate the stormwater they create

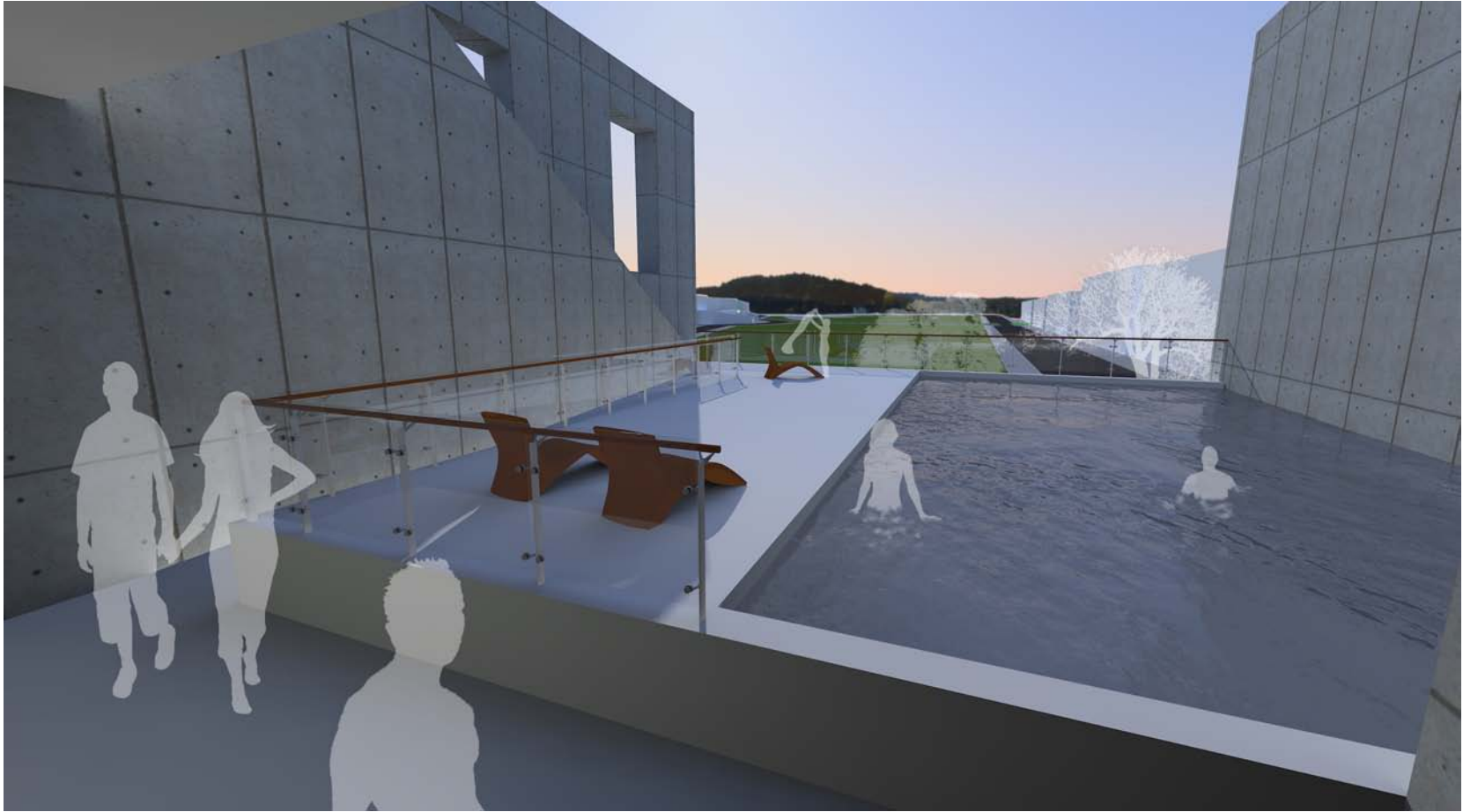


Testing the Plan

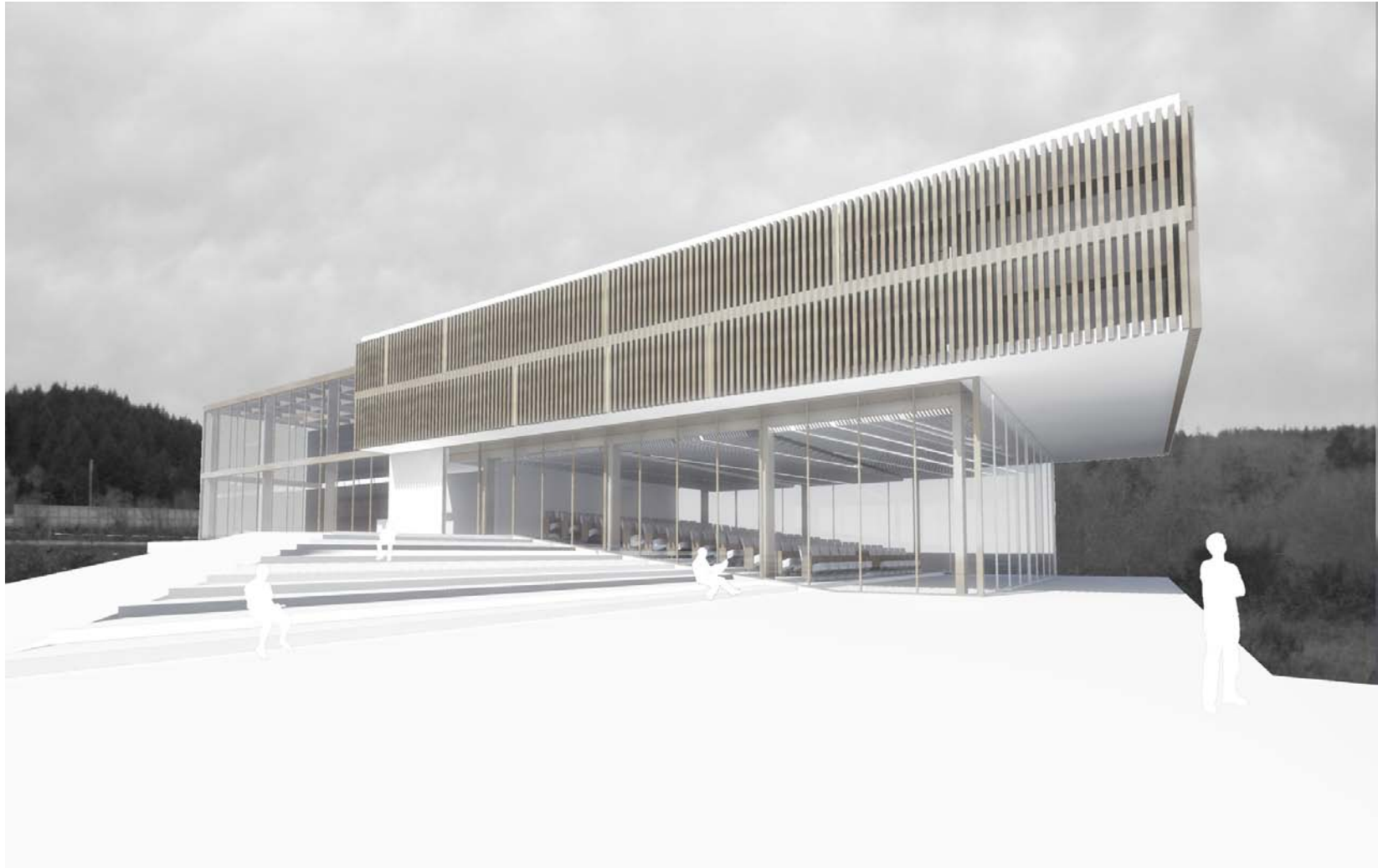














LCC Perimeter Master Plan

Framework Plan Update

May 2010