

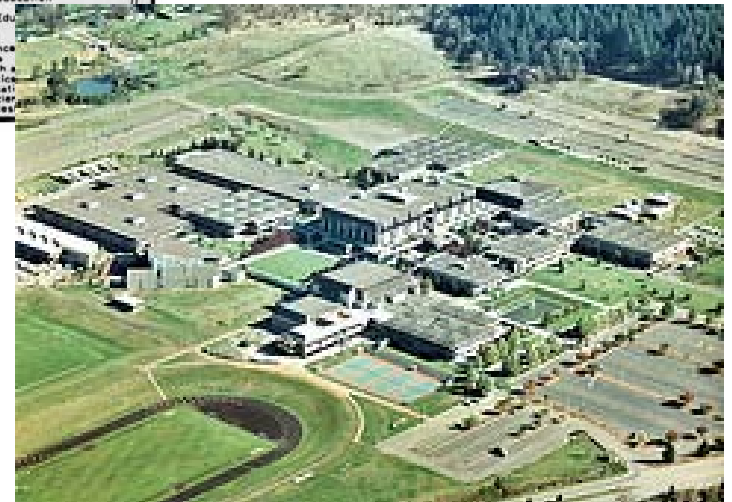
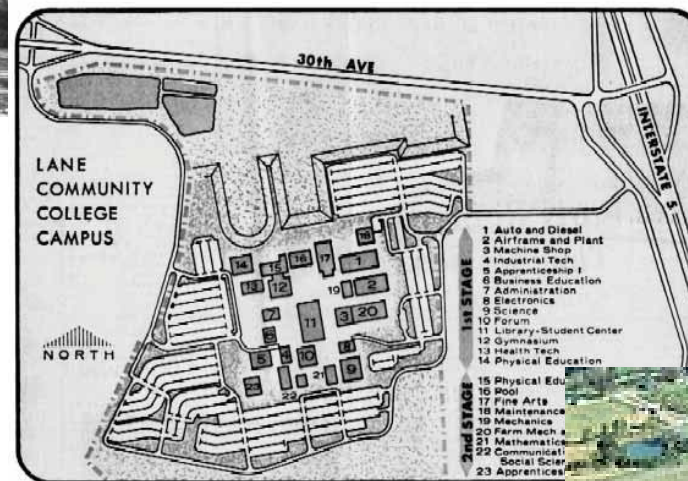
Lane Community College

Long Range Planning

11 May 2011 Board Update



Lane Community College





Planning & Design Process

Planning Process

Phase 1: Visioning Workshops

Kick-Off Workshop – October 2, 2009
Workshops – October 19 and 24, 2009
Develop Vision, Goals, Principles (VGP)
Board of Education Update – February 3, 2010
Evaluation of Options 1-3 to VGP – February 12, 2010
Revised Option 4 Review – March 2010
Board of Education Update – May 12, 2010

Phase 2: Conceptual Vision Documentation (CVD)

In-Service Open House – May 25, 2010
Athletic Complex Analysis – May 26, 2010
Athletic Complex Meeting – June 2, 2010
Revised Option 5 Review – July, 2010
Conceptual Vision Document Review – August 24, 2010
MPTF CVD final review – October 6, 2010
Board of Education Adopts VGP and ADP – October 2010

Phase 3: Regulatory Meetings and Interviews

Regulator Interviews (11) – December 2010-January 2011
Board of Education Update – February 9, 2011
Bond Mega Meeting – February 16, 2011
Department Resource Group Meetings (6) – March-April 2011

Phase 4: Workshop Area Development Plans

Workshop – January 26-28, 2011
ADP Review – February 11, 2011
ADP Review March 8, 2011
Long Range Planning Draft Report – April 12, 2011
Long Range Planning Breakfast – May 9, 2011
Long Range Planning Prefinal Report – May 11, 2011
Long Range Planning final Report – June 14, 2011

100's

LCC Faculty, Staff, Students

29

Community Members

24

Local, City, State

3

Design Studios

40

UO Students



Regulator Meetings

December 2010-February 2011

STATE

Department of Land Conservation and Development

COUNTY

Lane County Public Works

Transportation Planning and Land Management

LOCAL

- City of Eugene

- Planning Department

- Transportation Planning

- Parks and Open Space

-City of Springfield

- Development Services

- Lane Transit District

- Eugene Water and Electric Board

- 1000 Friends of Oregon

Land Use

Transportation

Utilities & Infrastructure

Department Resource Group Meetings and Governance Councils

March – April 2011

- Science/Ecological Resource Group
- Science and Center Building Resource
- Library, International Program, Disability Services Resource
- Food Services Resource Group
- Media Arts Resource Group
- Center Building and South Resource Group

Governance Council:

Facilities Council: April 26, 2011, May 10, 2011

College Council: May 12, 2011, May 26, 2011

The Centre Building

The Natural Environment

Communication & Transparency

Planning Vision and Goals

Lane Community College Master Plan Vision:

To create a campus that has **appropriate infrastructure** that fosters educational excellence through **sustainable building and landscape practices** organized around **equitable accessibility** contributing to a **complete community**.

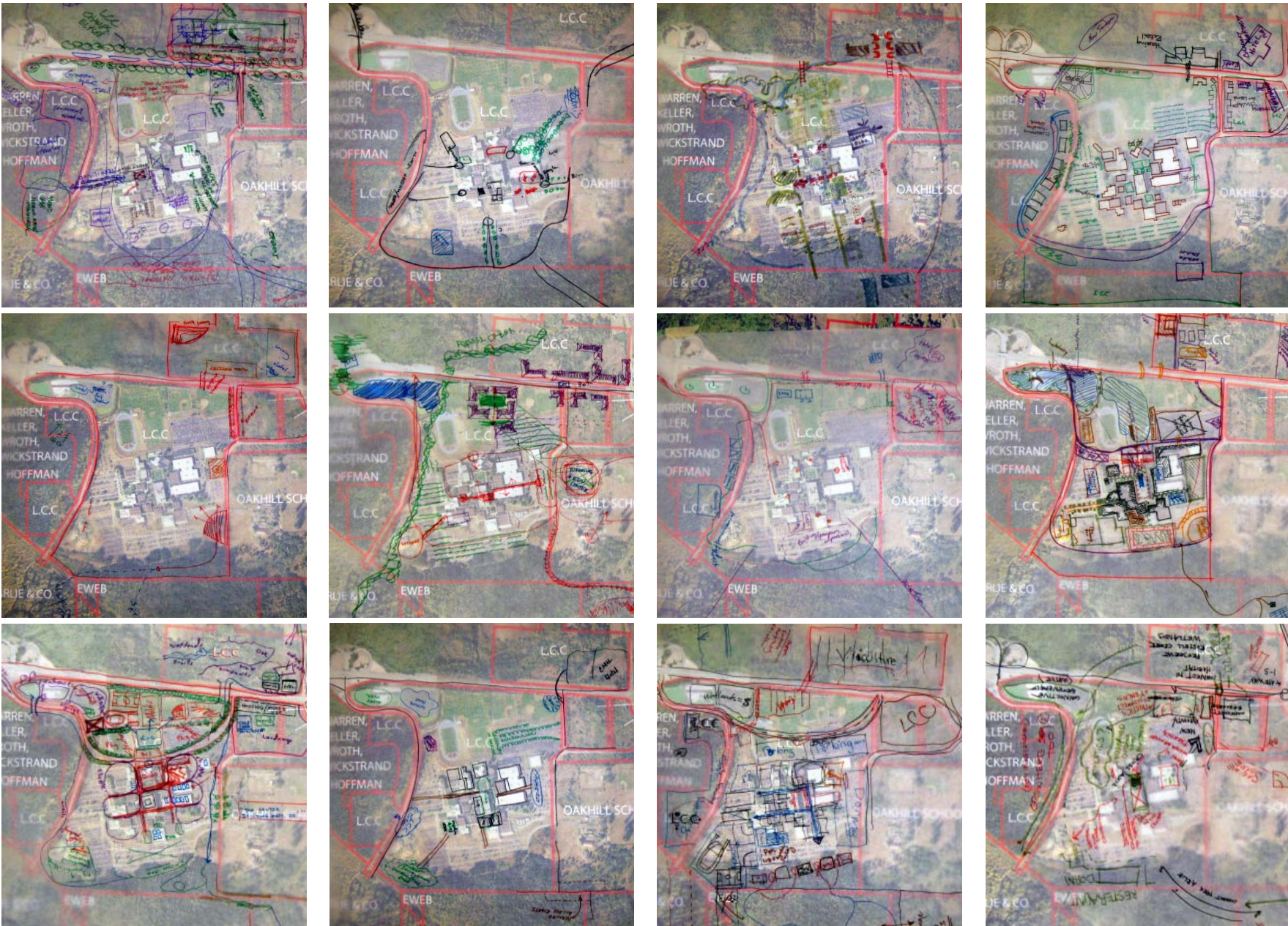
Goal 1: Appropriate Infrastructure. Layout a strategy that incorporates camouflaged support services into the campus core that are efficient and logical.

Goal 2: Sustainable Building and Landscape Practices. Produce a vision that maximizes environmental stewardship and green technologies through attractive, well designed, safe, convenient, and comfortable buildings and outdoor spaces.

Goal 3: Equitable Accessibility. Provide easily identifiable hierarchy of gateways, roadways and pathways that promote safe, convenient, and comfortable options.

Goal 4: Complete Community. Provides places to learn, live, shop, work and play that help create a well-balanced environment for all Lane County residents.

12 Schemes :: 10 Common Themes



Housing on the South Side

IN 5/12 PLANS



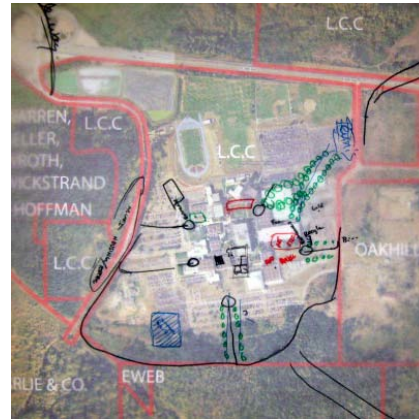
Perimeter Parking

IN 9/12 PLANS



Campus Quads

IN 11/12 PLANS



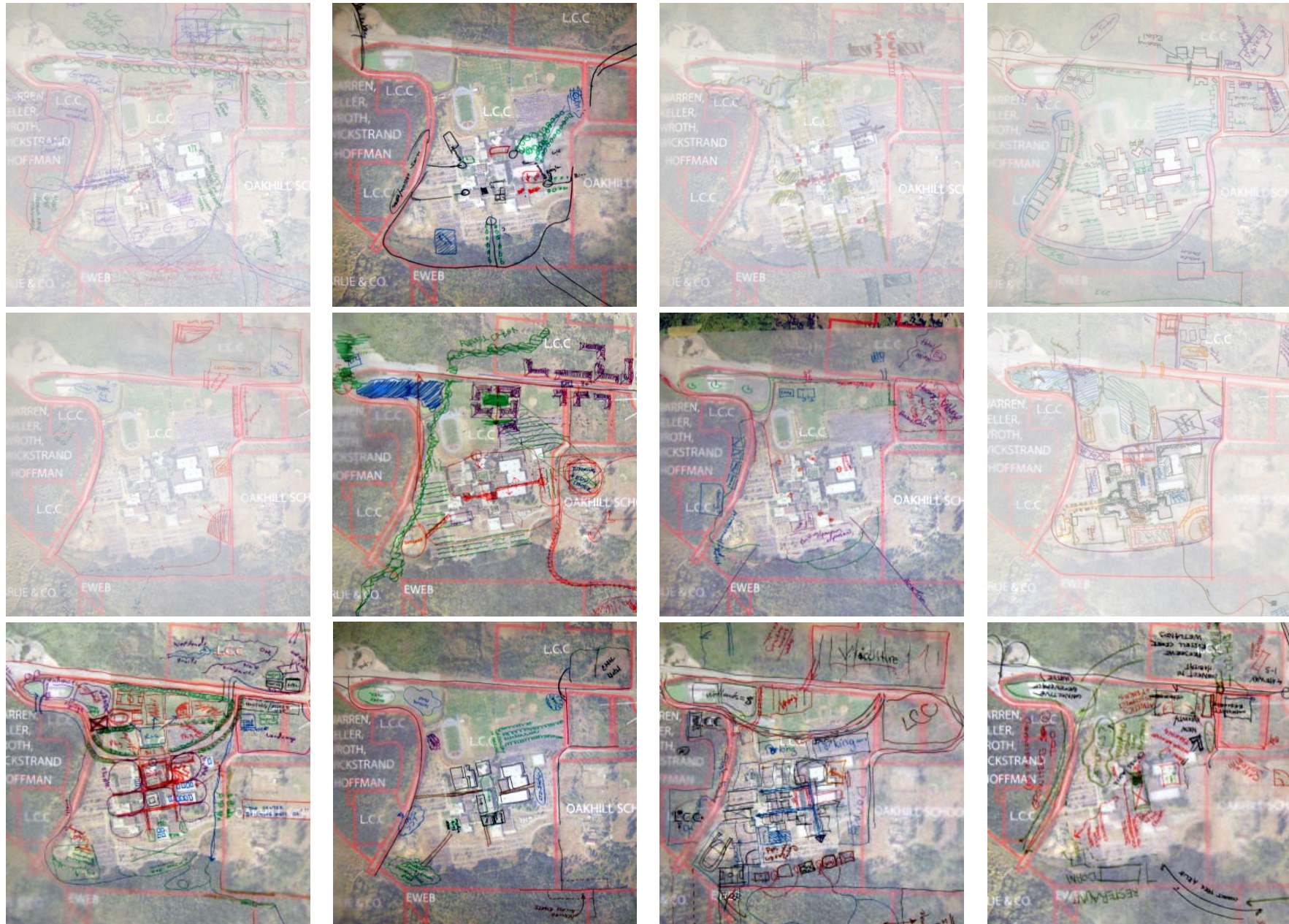
Nodal Development Along I-5

IN 9/12 PLANS



Preserve the Wetland

IN 7/12 PLANS



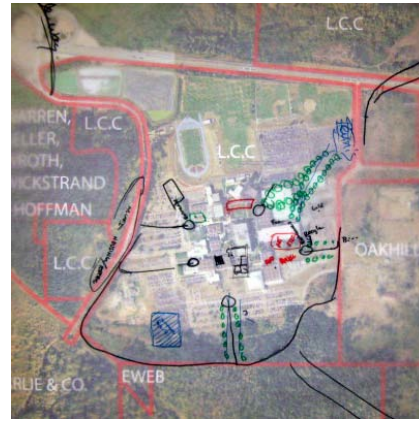
Preserve the LCC Forest

IN 7/12 PLANS



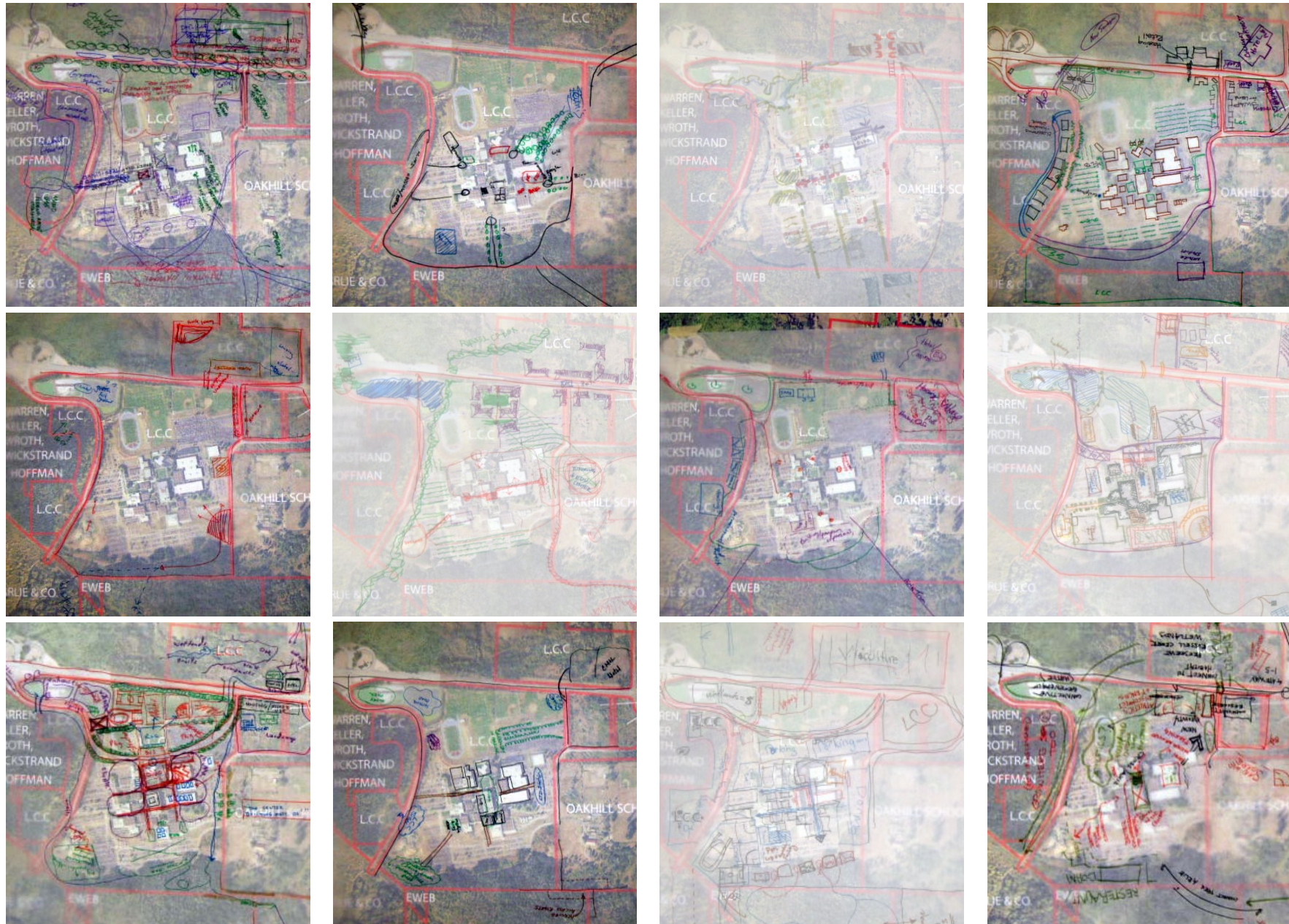
Short Walks

IN 12/12 PLANS



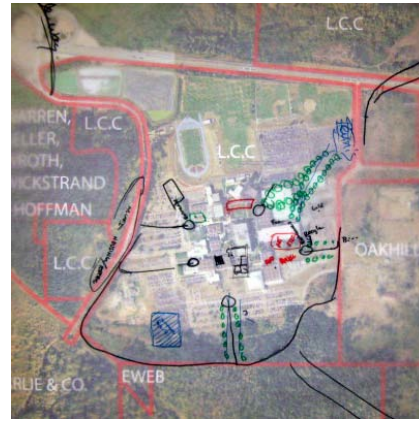
Preserve Recreation Fields

IN 8/12 PLANS



Connections to Nature

IN 12/12 PLANS



Develop a Campus Gateway

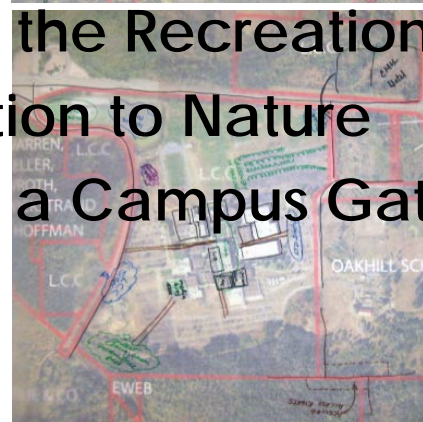
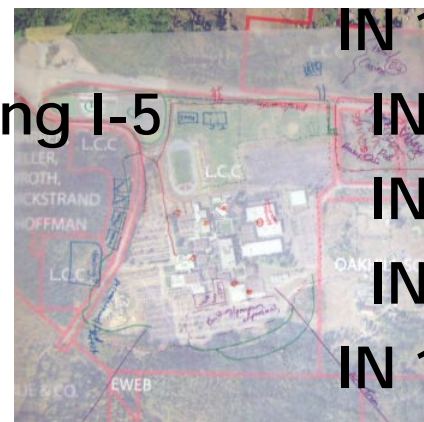
IN 5/12 PLANS



12 Schemes :: 10 Common Themes



Housing on the South Side
Perimeter Parking



Campus Quads
Nodal Development Along I-5
Preserve the Wetlands
Preserve the LCC Forest
Short Walks

IN 5/12 PLANS
IN 9/12 PLANS

IN 11/12 PLANS
IN 9/12 PLANS
IN 7/12 PLANS
IN 7/12 PLANS
IN 12/12 PLANS

Preserve the Recreation Fields
Connection to Nature
Develop a Campus Gateway

IN 8/12 PLANS
IN 12/12 PLANS
IN 6/12 PLANS

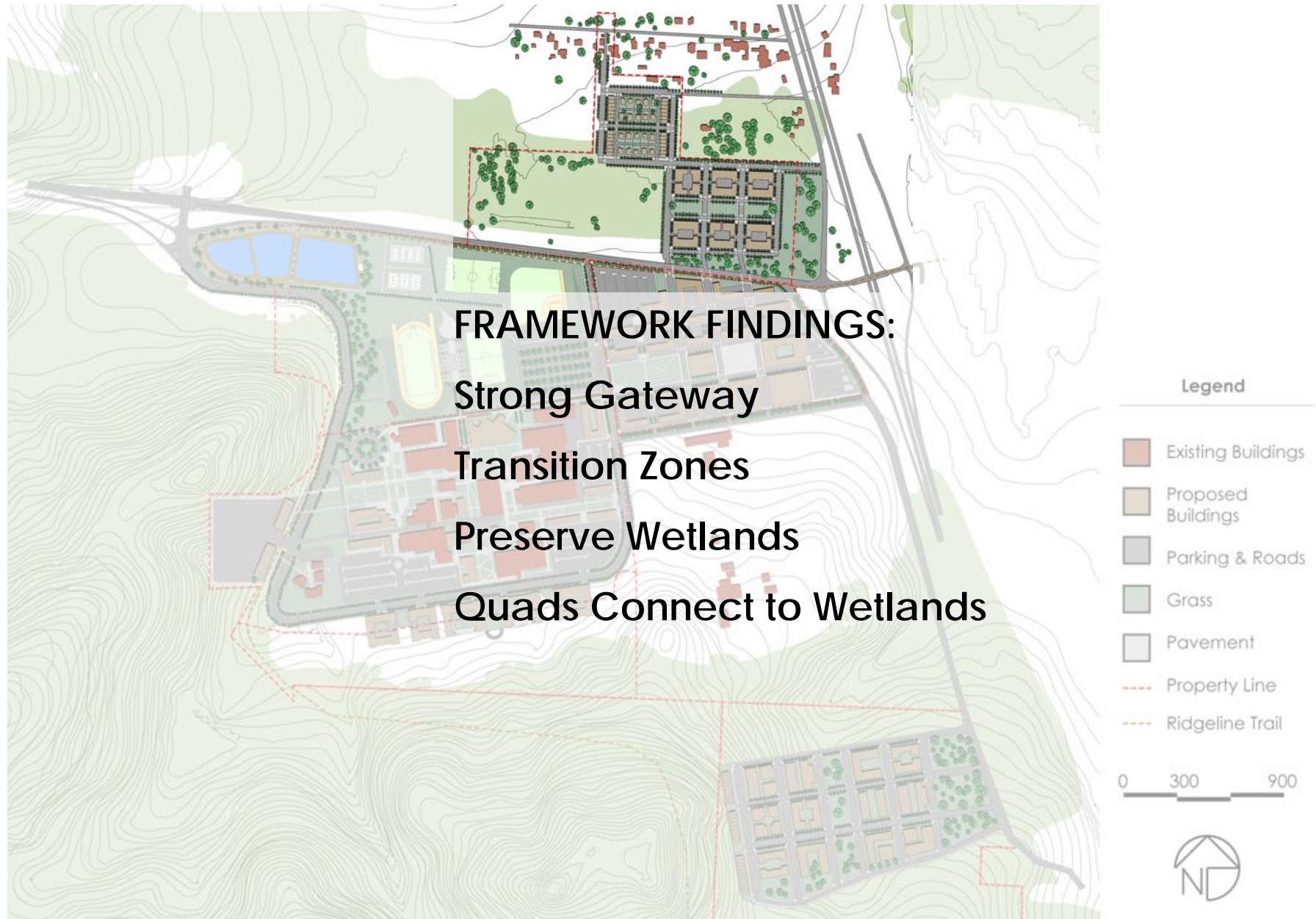


Current Framework

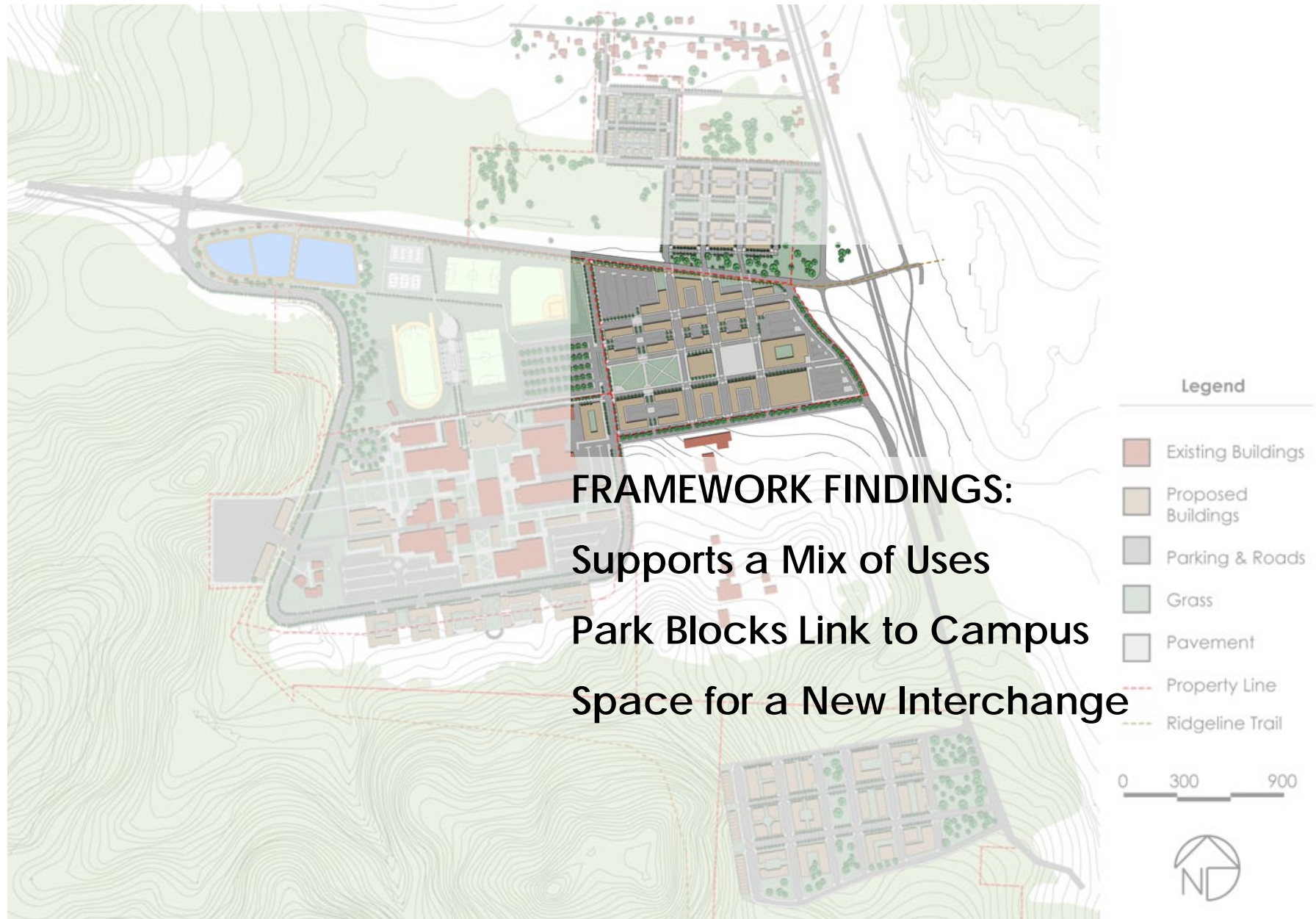
Overall Illustrative



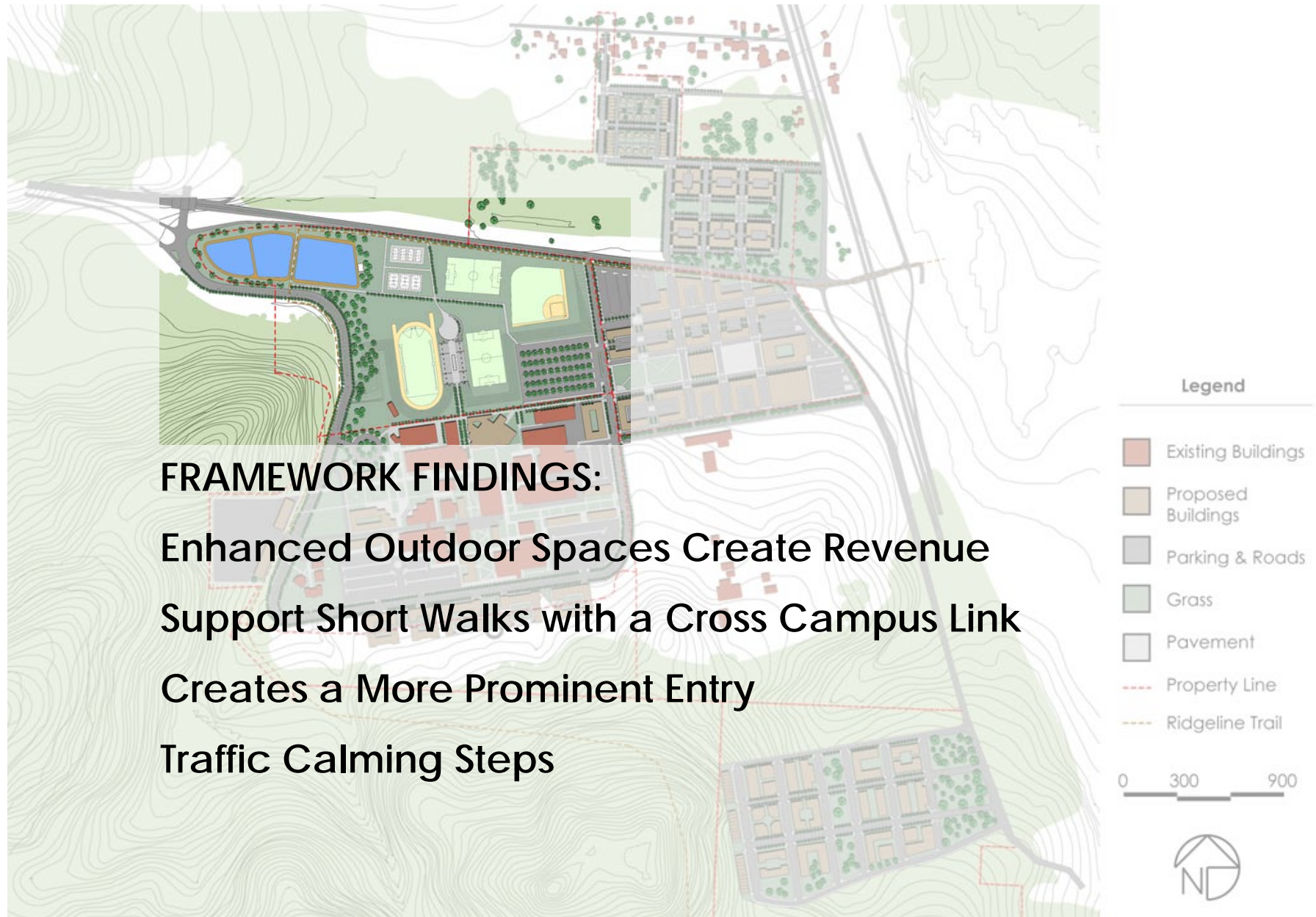
Northside ADP



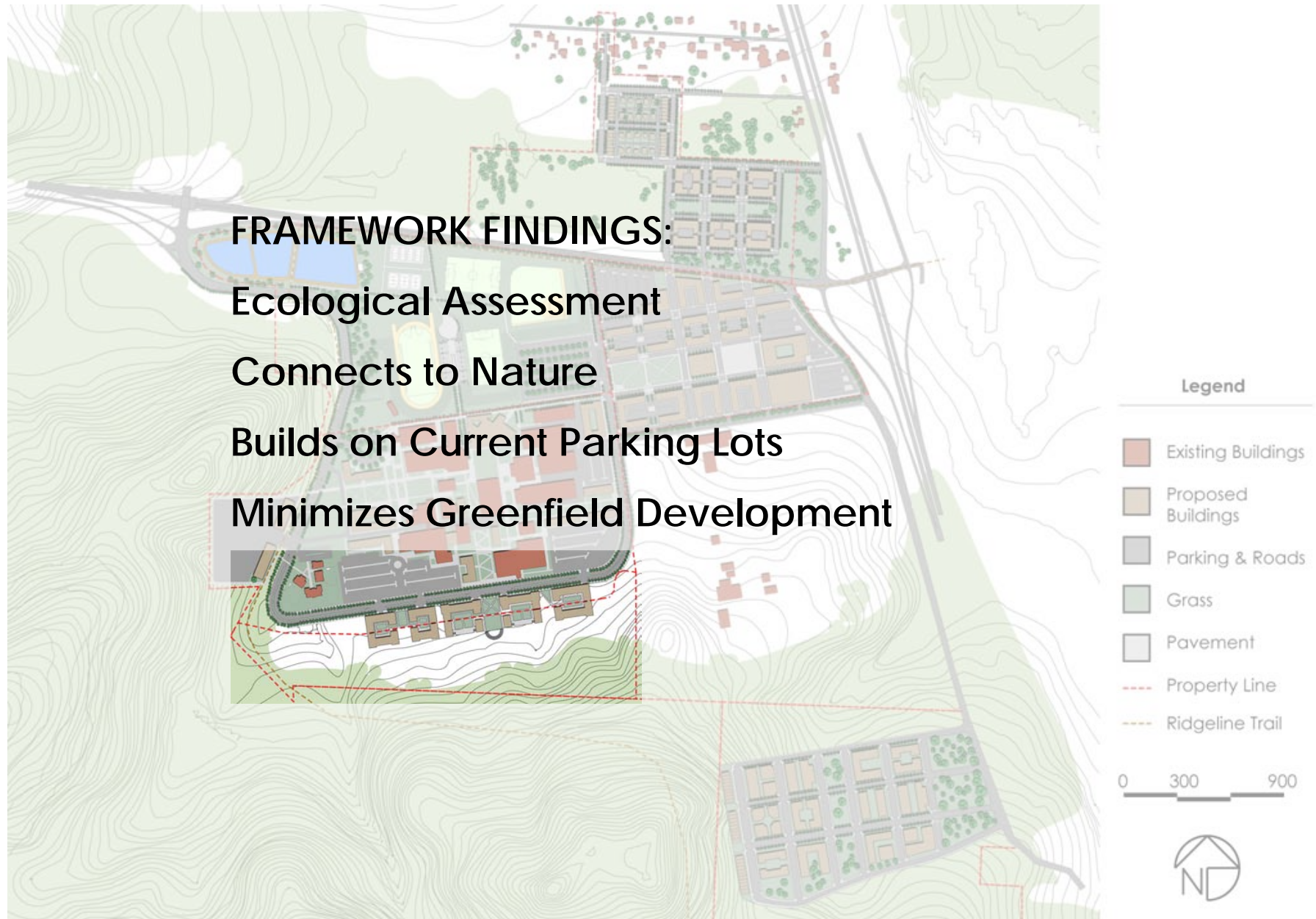
Eastside ADP



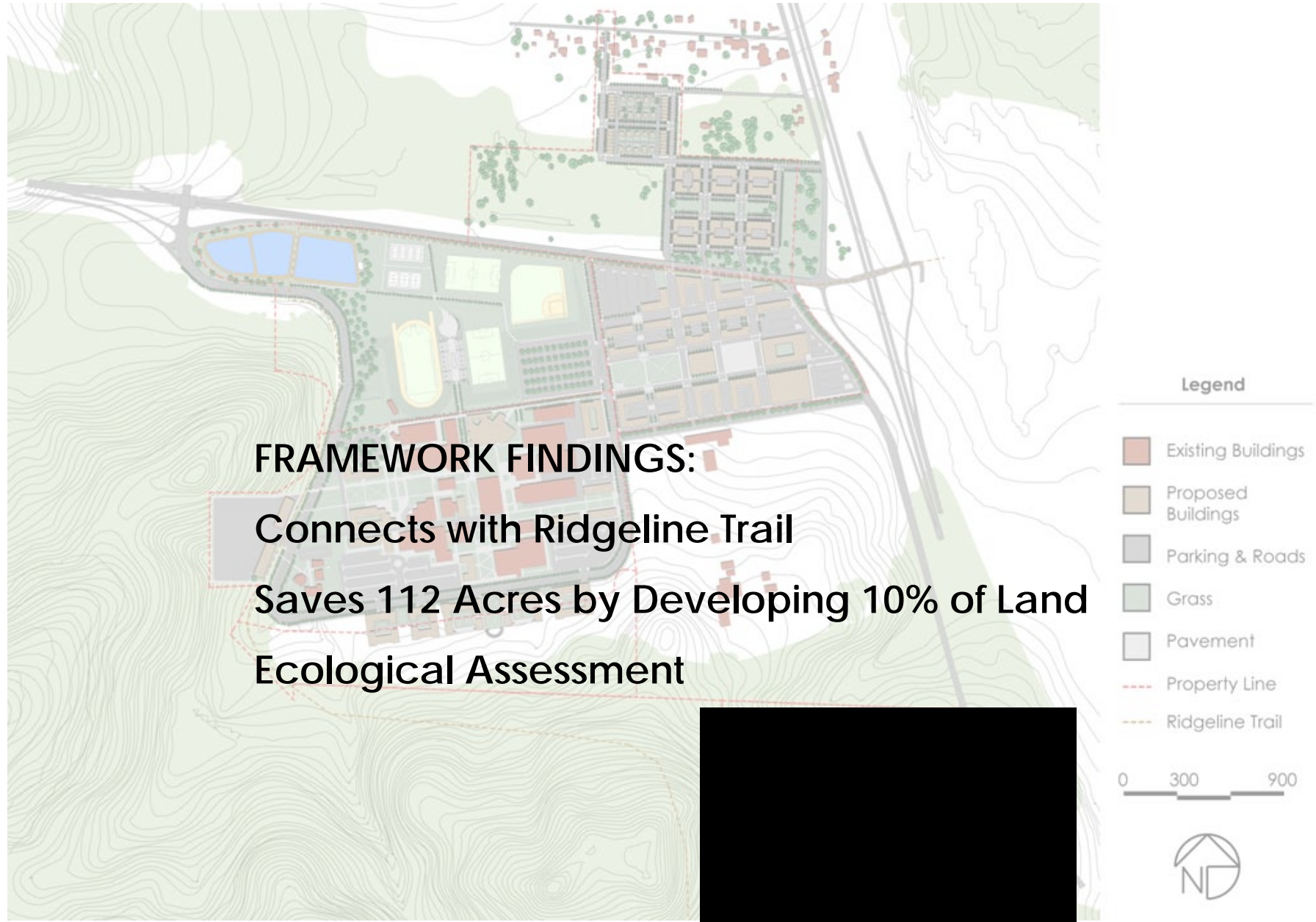
Front-Yard ADP



Southside ADP



South-Eastside ADP



Campus Core ADP

FRAMEWORK FINDINGS:

Campus Quads Stitch Campus Together

Enhances Wayfinding & Sense of Place

Maintains Perimeter Parking



Legend

- Existing Buildings
- Proposed Buildings
- Parking & Roads
- Grass
- Pavement
- Property Line
- Ridgeline Trail

0 300 900



Mega Meeting

February 2011

- Master Planning Task Force
- Bond Leadership Team
- Facilities Council

Center Building

Forum Building

Building 18

Dance Studio Building 6

Recommendations

- **EXPLORE**

- Land Use Allowance and Implications
- Legal Strategies (TDR, Legislation)

- **IDENTIFY**

- Future Projects Based on Current and Future Needs
- Appropriate Connection to Surrounding Parkland

- **INVESTIGATE**

- Entrepreneurial Opportunities that link to Academic Programs
- Potential Land Acquisitions

- **ESTABLISH**

- Local Government Resource Group
- Business Development Position
- Environmental Evaluation Criteria

- **CONDUCT**

- Environmental Impact Study
- Transportation/Parking Study

- **ADVOCATE**

- Improvement of Alternative Transportation (bike, car-share, brt-Eugene, Glenwood-Springfield)

Next Steps

24 May 2011	2011 Draft Report Comments Due from LCC
6 June 2011	2011 Final Report Submitted
14 June 2011	Board of Education Meeting
2011-2012	<ol style="list-style-type: none">1. Technical Framework for the Northside ADP<ul style="list-style-type: none">- Ecological Assessment- Illustrative Plan- Phasing Plan- Regulating Plan2. Sustainability Analysis for the South and Southeast ADP<ul style="list-style-type: none">- Ecological Assessment3. Continued Campus Core Bond Alignment4. Connect with other resource groups<ul style="list-style-type: none">- Portland Sustainability Institute (PoSI)- Dovetail framework with surrounding municipalities

Lane Community College

Long Range Planning

11 May 2011 Board Update

